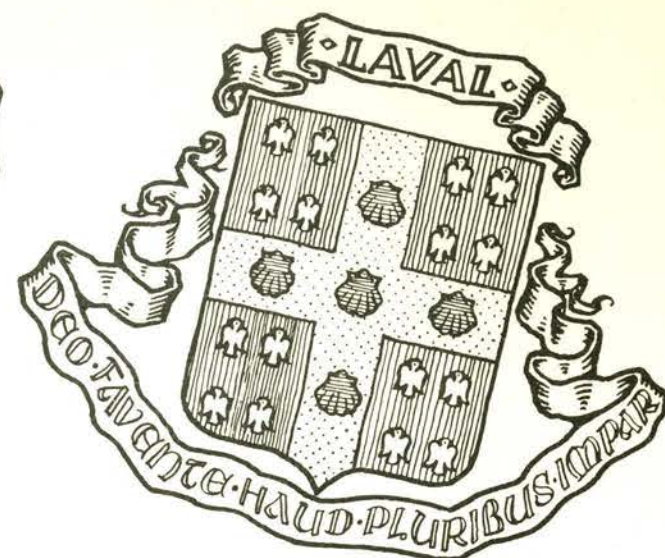


QUEBEC

1830-1850



**C**E RECUEIL EST DÉDIÉ À  
L'UNIVERSITÉ LAVAL À  
L'OCCASION DE SON CENTENAIRE  
et permettra à tous ceux qui ai-  
ment l'ancienne cité de Québec  
d'admirer sa splendeur passée, tout  
en se rendant compte des progrès réa-  
lisés pendant les derniers cent ans.  
L'Université Laval a permis cette édi-  
tion en mettant à la disposition des  
éditeurs les gravures reproduites  
ci-après. ~~~~~  
L'amour du pays et de sa glo-  
rieuse histoire a inspiré cet  
ouvrage.

**T**HIS SELECTION IS DEDICATED TO  
LAVAL UNIVERSITY IN QUEBEC  
ON ITS CENTENNIAL ANNIVERSARY  
and will permit all those who love  
their ancient city to admire the  
beauty of its antiquity and to rea-  
lize the progress achieved by Quebec  
in the last hundred years. ~~~~~  
The Laval University has enabled  
the editors to publish this edition by  
placing at their disposal the ten  
pictures reproduced. ~~~~~  
Love for the country and for its glo-  
rious history has inspired  
this work.



UNIVERSITÉ LAVAL  
MONTREAL



*Drawn on Stone by W. Walton, from a Sketch by R. J. Spruce.*

*Printed by C. Hellmuth.*

# QUEBEC.

LOWER CANADA.

VUE DE QUEBEC, PRISE DE LA POINTE LEVI.

VIEW OF QUEBEC, FROM POINT LEVY.

*Proof*

*London, Published by A. Desorme, February, 1835, & Sold by A. Desorme, Engraver, Montreal.*





*Drawn in Stone by W. Martin from a Sketch by H. A. Girault.*

*Printed by C. Hollander.*

QUEBEC.  
LOWER CANADA.

VUE DE LA PLACE D'ARMES ET DE L'EGLISE EPISCOPALE D'ANGLETERRE, PRISE DU JARDIN DU GOUVERNEUR (QUÉBEC.)

VIEW OF THE PLACE D'ARMES & OF THE EPISCOPAL CHURCH OF ENGLAND, FROM THE GARDEN OF THE GOVERNOR.

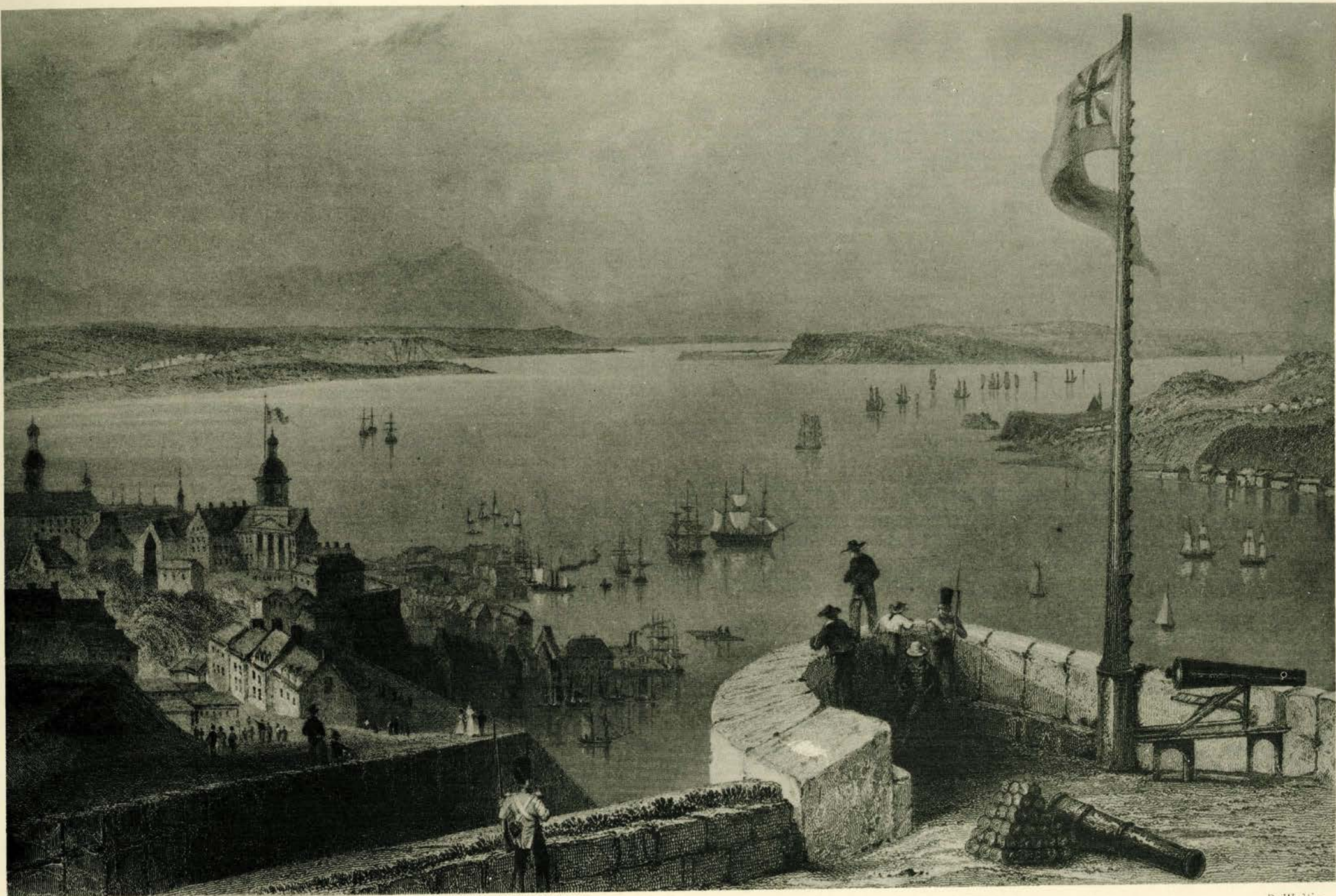
*Proof*



W. H. Bartlett.

H. Griffiths.

*Quebec*



W. H. Bartlett.

R. Wallis.

*View from the Citadel of Quebec.*



W.H. Bartlett.

F.W. Topham

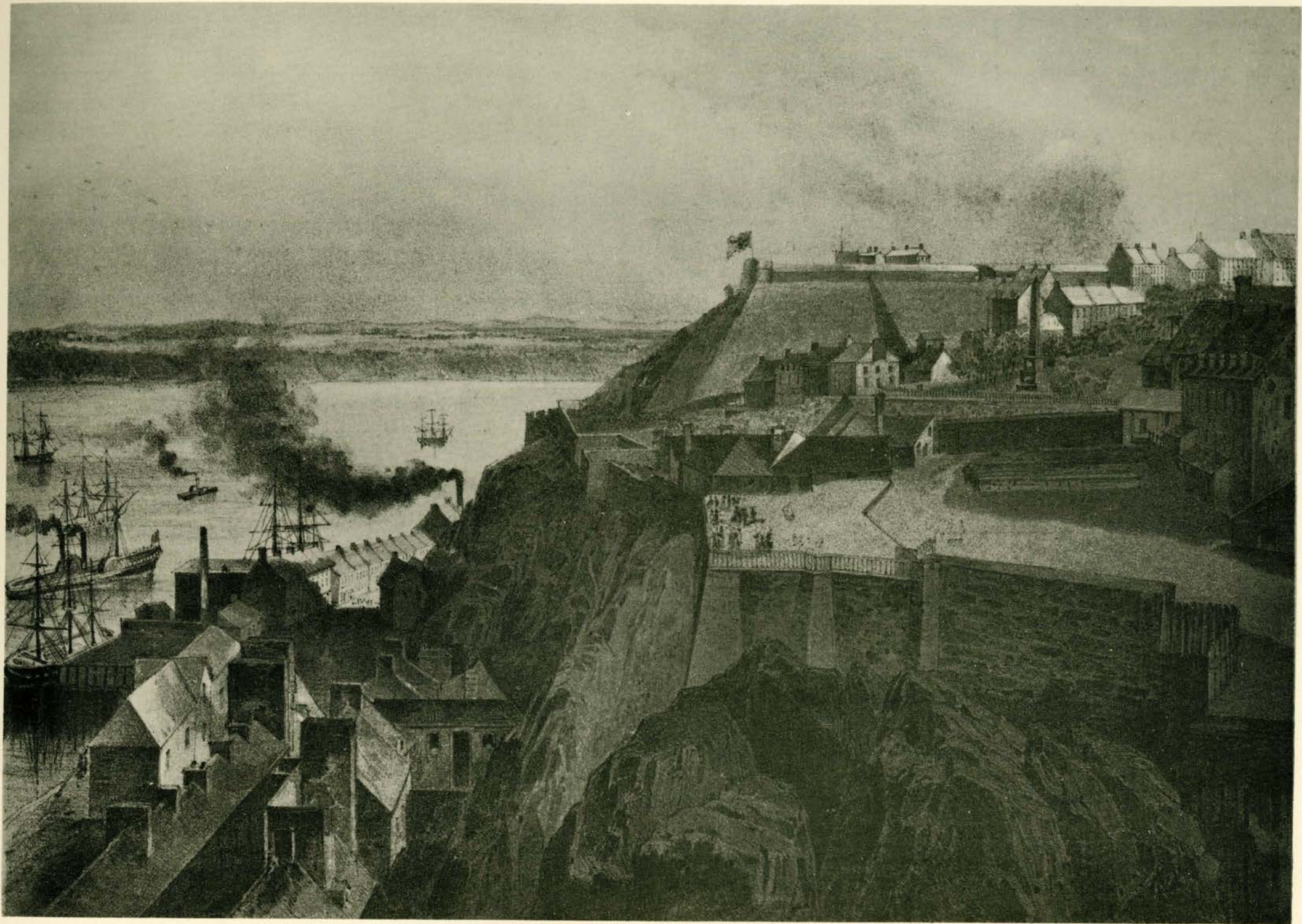
*The Market Place, - Quebec.*





LITH. BY J. GARDNER & CO. N.Y.

MONUMENT TO WOLFE &, MONTCALM, QUEBEC .



LITH. OF ZACHY W. HAJOS, NEW YORK.

**VIEW FROM PARLIAMENT BUILDINGS, QUEBEC .**



LITH. OF SARONY & MAJOR, NEW YORK.

ST. JOHNS GATE, QUEBEC.