

IONA, Rue



archives municipales

VOUS NOUS OBLIGERIEZ EN NOUS RETOURNANT

LE DOSSIER DANS LE PLUS BREF DÉLAI.

**CE DOSSIER
CONTIENT
DES
DOCUMENTS ORIGINAUX.**

**ILS SONT CONSERVÉS DANS
LE FONDS DU SERVICE DU
GREFFE (VM6)**

12820.69

Montreal Deaf Campaign Lags

The Montreal Oral School for the Deaf says it will have to "curtail" its educating of deaf children if something cannot be done to perk up its annual campaign for funds.

The campaign, which ends Monday, is seeking a minimum of \$70,000 to continue its program. So far only 20 per cent of that objective has been donated.

"If this trend continues," Dr. R. S. Stuart, president of the school, said yesterday, "the results cannot help but be a tragedy for at least some

of these children." The school's classes are located on Iona Ave. School, and it devotes its full efforts to the education and rehabilitation of deaf children.

"We require money proportionate to the numbers of pupils and teachers," Dr. Stuart explained, "and there is just no way of accommodating all expenses to any lessened level without seriously affecting some children."

He made a strong appeal to Montrealers, asking everyone to give up a little to see that

the deaf children "have their chance."

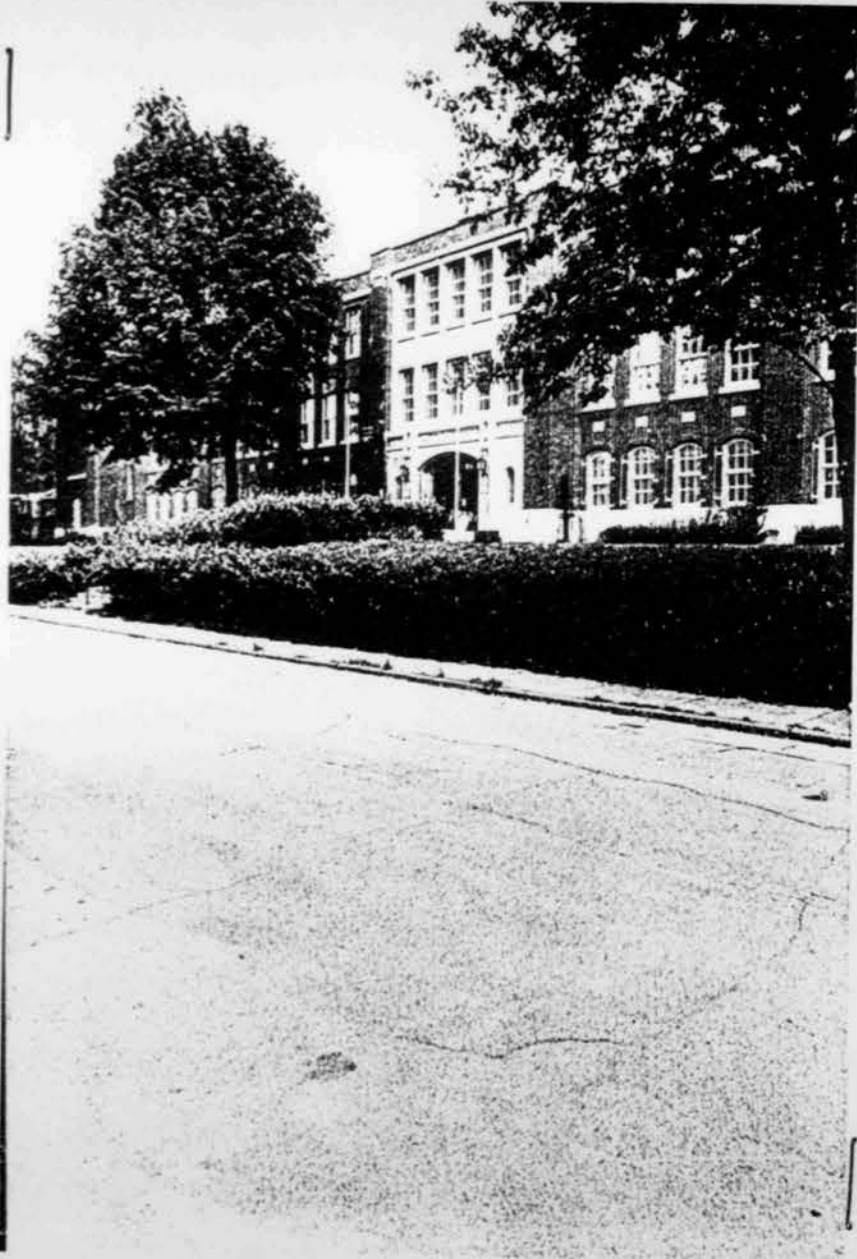
"We are very sorry to have to ask for educational support by this means, but at present we have no other means of support available to us."

The school educates some 60 per cent of English-speaking deaf children in Quebec. It now has 50 students in classes, nine pre-schoolers, and 22 after school graduates.

One activity which may have to be curtailed would be the working with children outside of school hours.



IONA High School
5000 rue Iona plus Queen Mary
Mtl



IONA High School
5000 rue Iona pres Queen & May
M+L

SERVICE DE L'URBANISME

R 4894.2
(5000)



NO. DE PHOTO: 42388

1. NOM	: Ecole Iona Avenue
2. NO. CIVIQUE	: 5 000 rue Iona
3. CADASTRE	: 02-150-38 et autres
4. QUARTIER DE PLANIFICATION:	40 - Showdon
5. NO. DE DOSSIER	:
6. REGLEMENT DE ZONAGE	: 3955
7. OCCUPATION PERMISE	: Habitation
8. PROPRIETAIRE	: P.S.B.C.M.
9. EVALUATION MUNICIPALE	: T. 627,750 - B. 1,530,250 - 2,150,000 (1982)
10. SUPERFICIE DU TERRAIN	: 9 926 m ²
11. NB D'ETAGES	: 3
12. SUPERFICIE DE PLANCHER	: 5 962 m ²
13. FINS D'ACQUISITION	: en suspens
14. REMARQUE:	<ul style="list-style-type: none"> - Bâtiment à conserver - Ville de Montréal: projet de PLM pour personnes âgées et opération 10 000 logements - Université de Montréal: reprise pour fins institutionnels.

1 MARS 1984

C.U.M.
60-62

A

