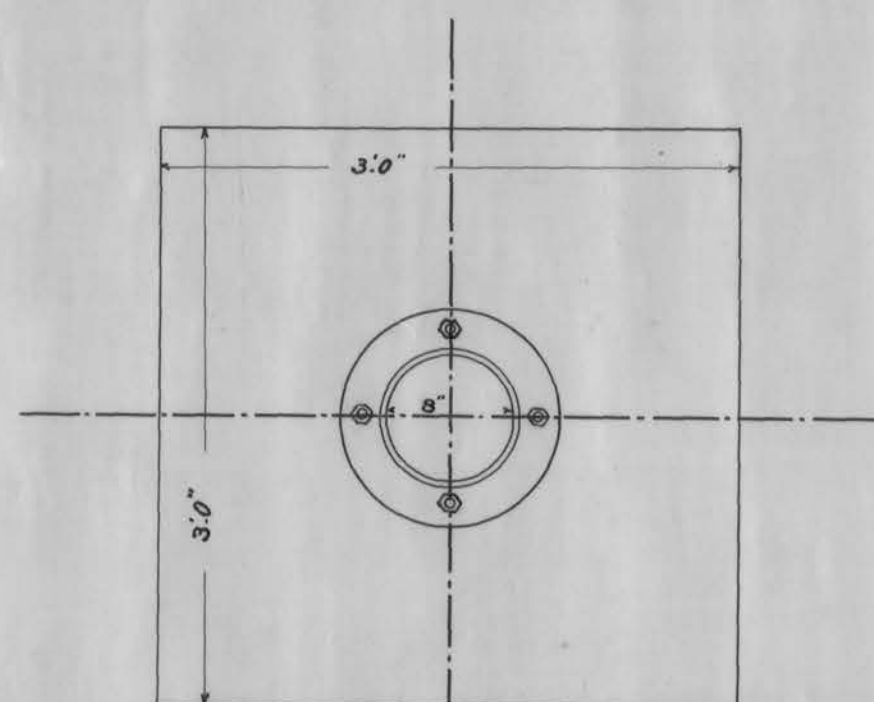


ELEVATION HALF IN SECTION

Scale 2" = 1 inch



PLAN OF REINFORCING PLATE

Scale = 1" = 1 inch

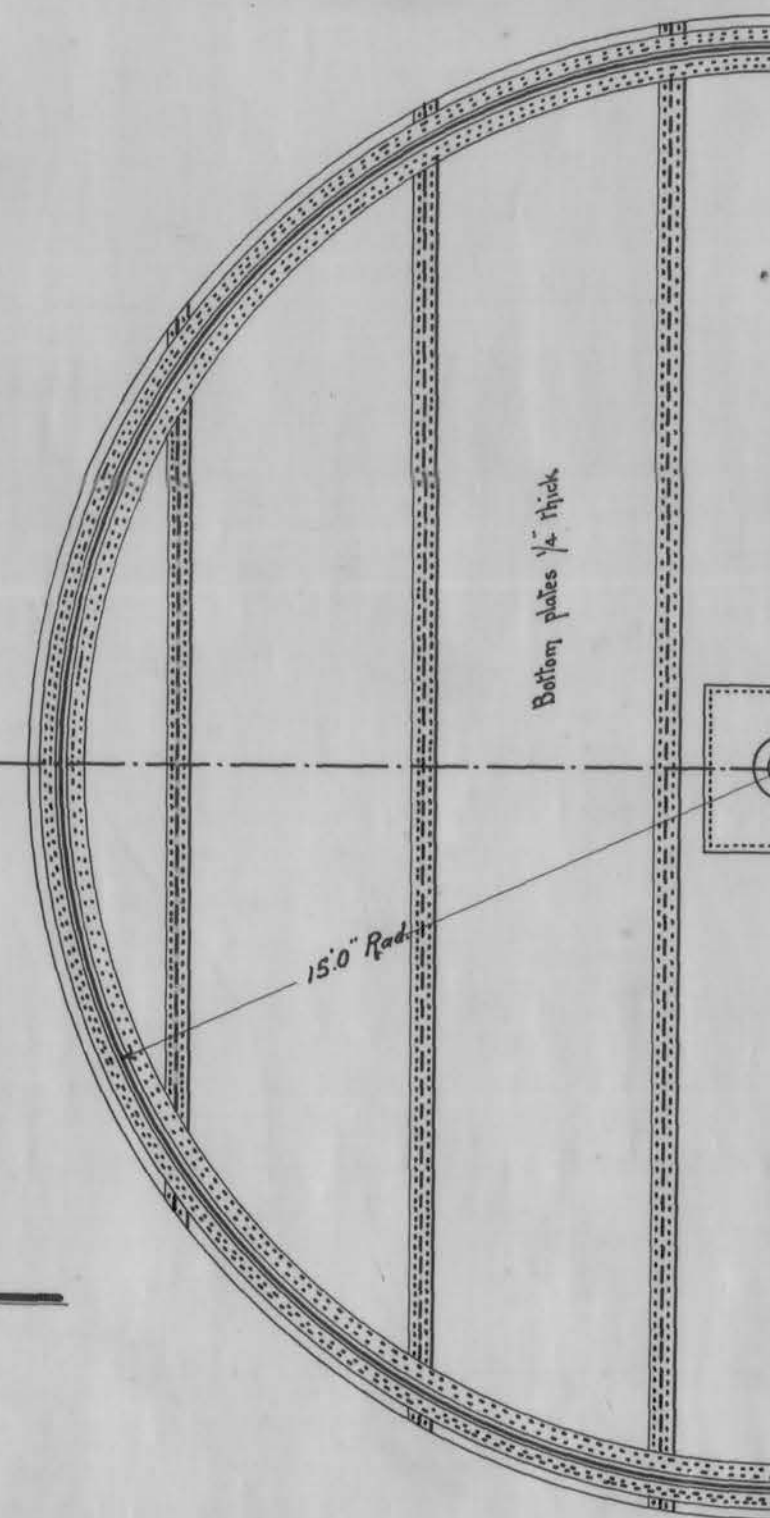
MONTREAL WATER & POWER CO.

PLAN OF TANK FOR
WESTMOUNT HILL

Montreal, July 11th, 1898.

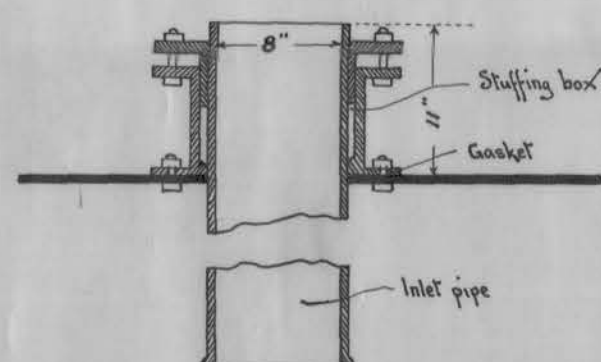
Prepared by:

J. Emile Vance
Chief Engineer, M.W. & P. Co.



HALF PLAN VIEW

Scale 2" = 1 inch



PART SECTION OF BOTTOM
TROUGH INLET PIPE

Scale 1" = 1 inch

1390

No 301