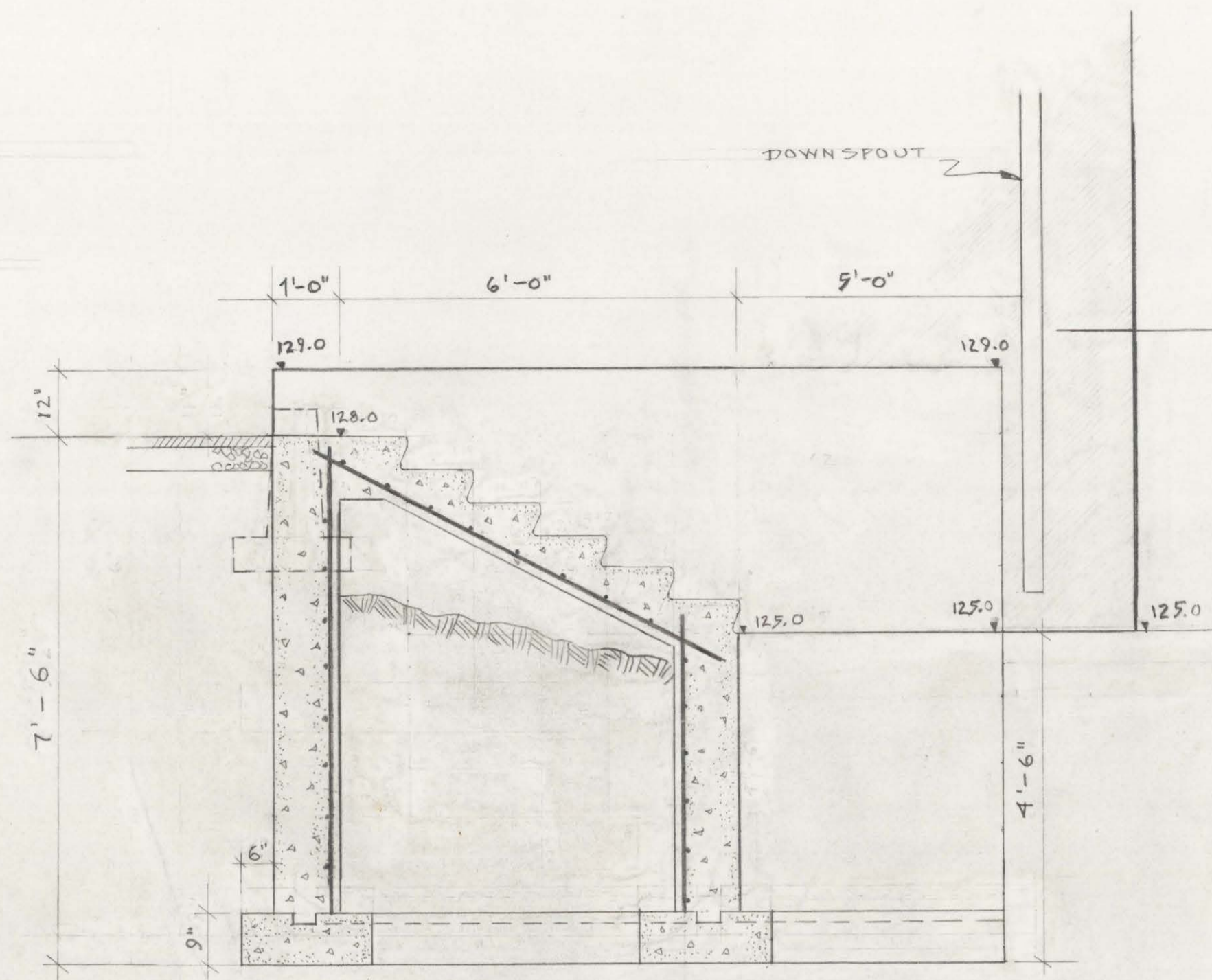
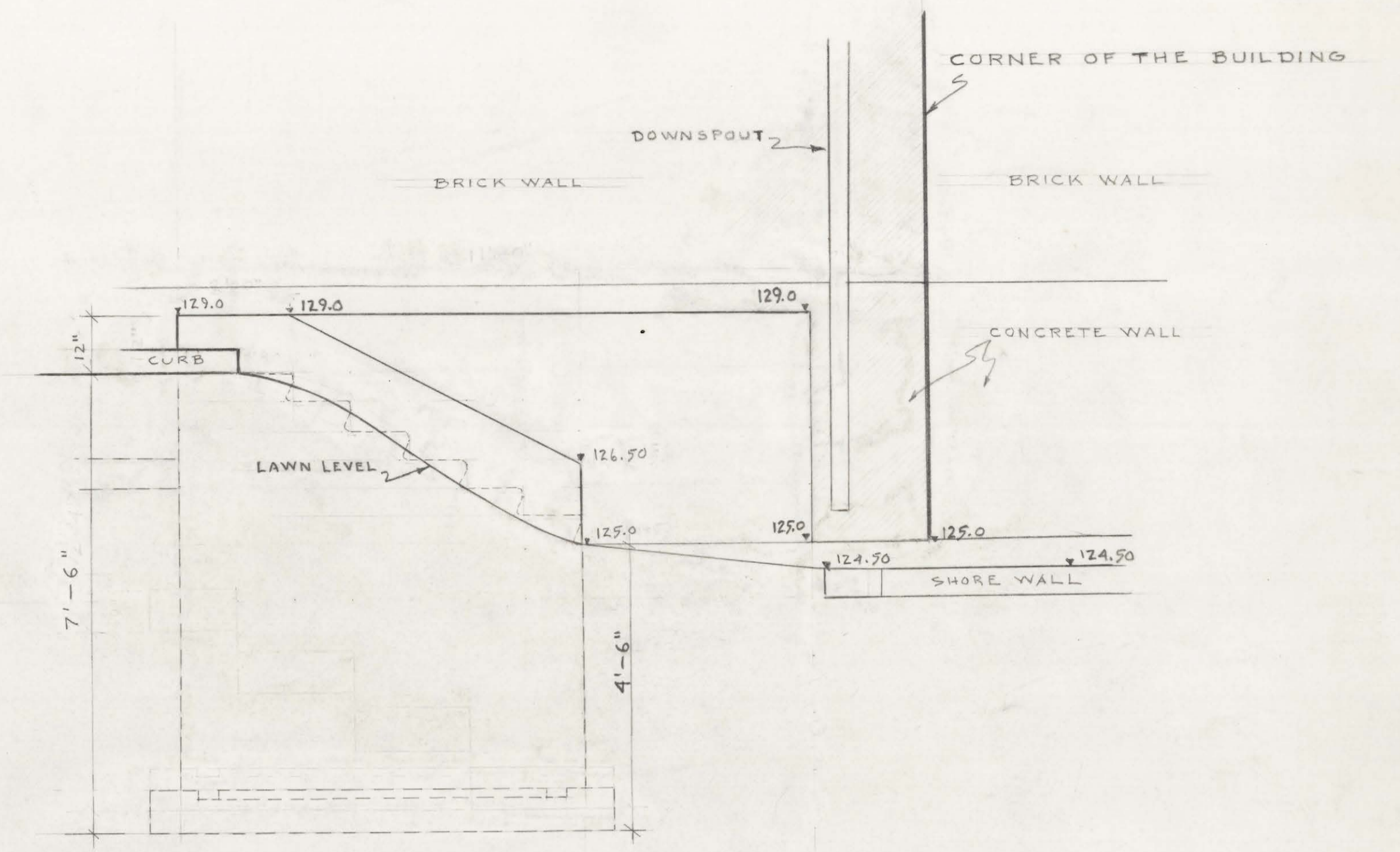


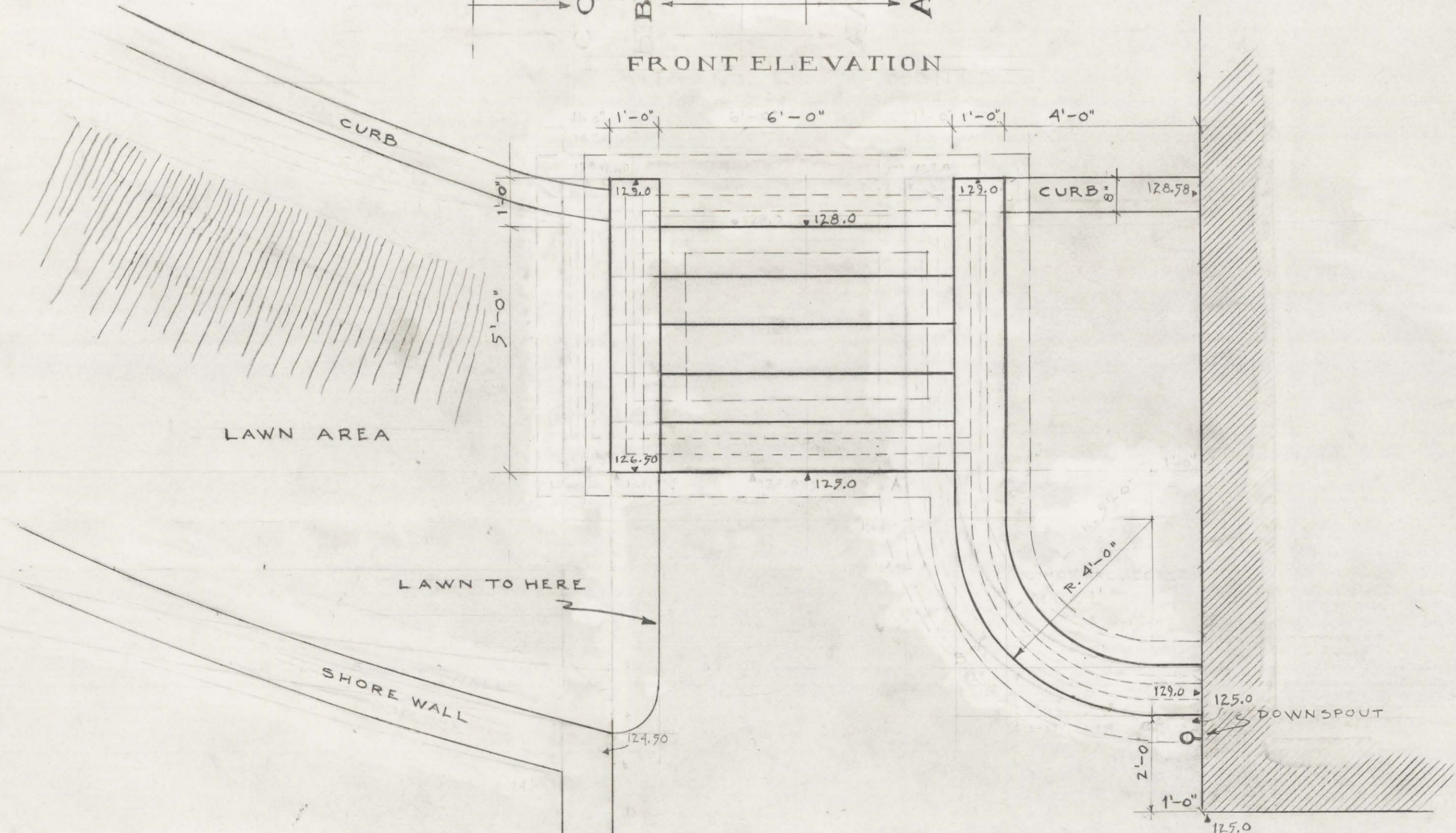
FRONT ELEVATION



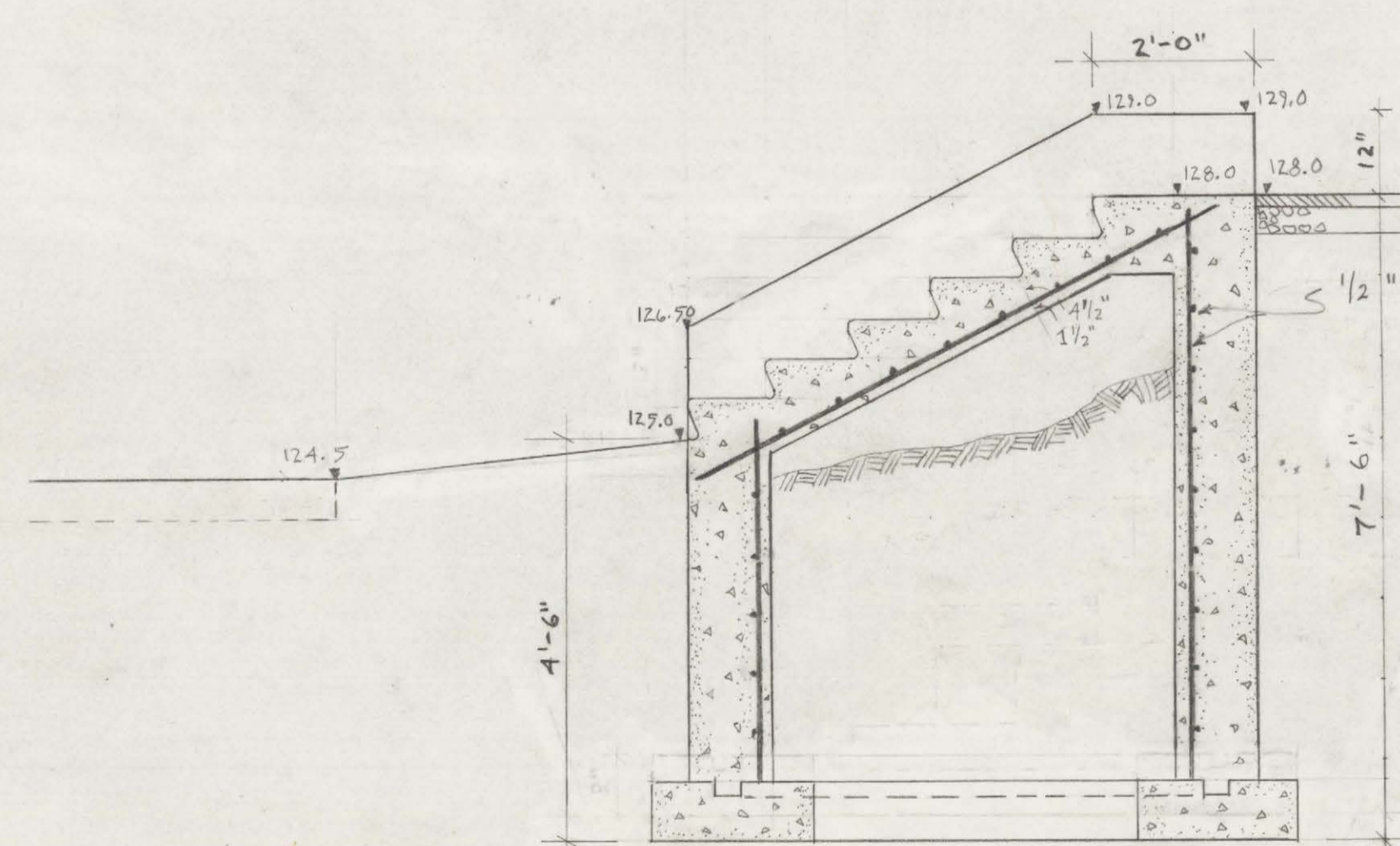
SECTION A-A



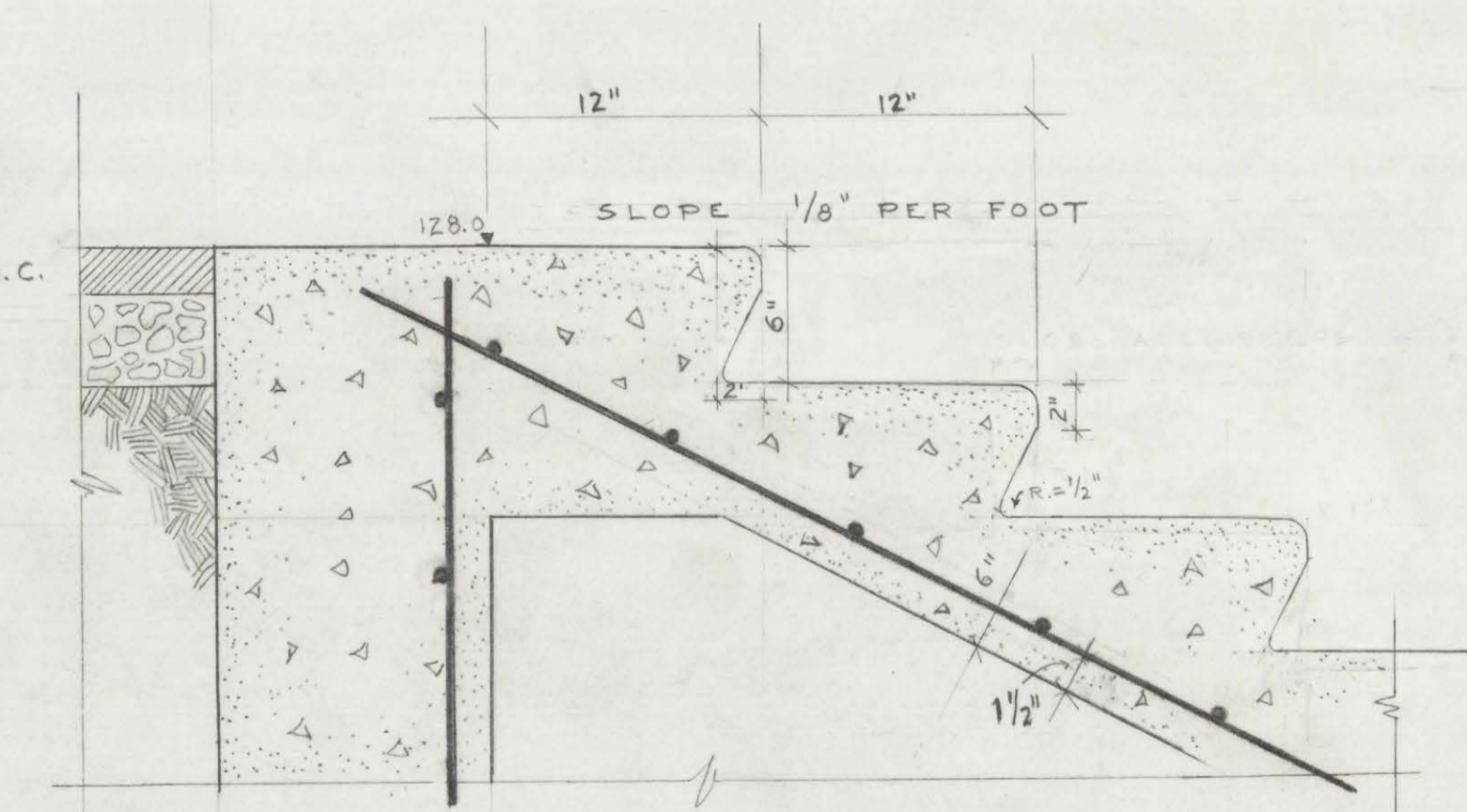
SIDE ELEVATION C-C



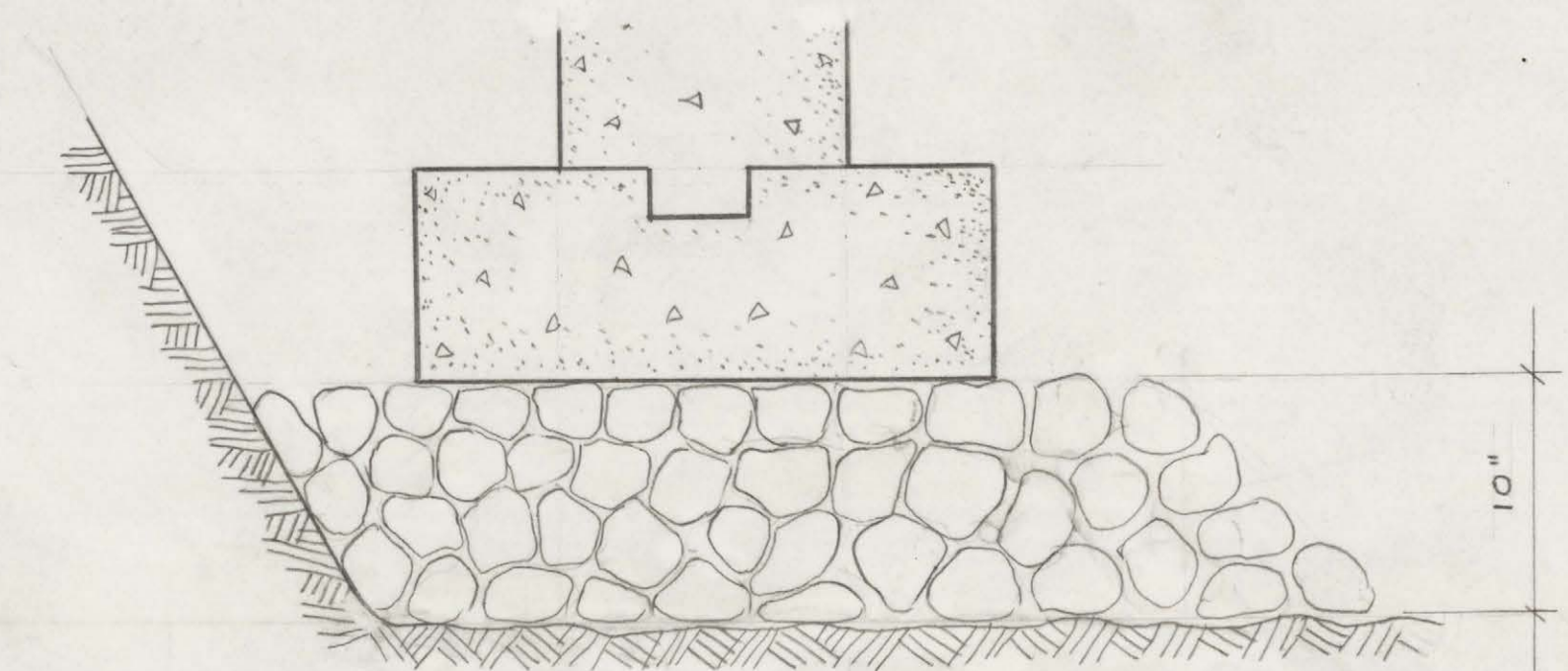
PLAN



SECTION B-B



TYPICAL STEP DESIGN
SCALE: 1 1/2" = 1'-0"



3" STONE FILL UNDER FOOTING (OVER WHOLE AREA)
SCALE: 1 1/2" = 1'-0"

REVISIONS			
CITY OF MONTREAL PUBLIC WORKS DEPT. TECHNICAL DIVISION - PARKS & PLAYGROUNDS SECTION LANDSCAPE ARCHITECTURE			
LA FONTAINE PARK			
STEPS IN REAR OF PAVILION			
DESIGNED BY:	M. H. Howitt	22 4/53	LANDSCAPE ARCHITECT
CERTIFIED BY:	C. G. S. S.		GROUP ENGINEER
CERTIFIED BY:	R. H. H.		RECORDS SUPERVISOR
APPROVED BY:			
DRAWN BY:	M. H.		
TRACED BY:	M. H.		
SCALE:	1/2" = 1'-0"		
FILE NO.:	6142	A-103-5	APRIL-17-1973
			DATE: