

GOING PLACES

for

GOOD NEIGHBOURS

MONTREAL, QUEBEC,

TROIS-RIVIERES, ST. MAURICE VALLEY,

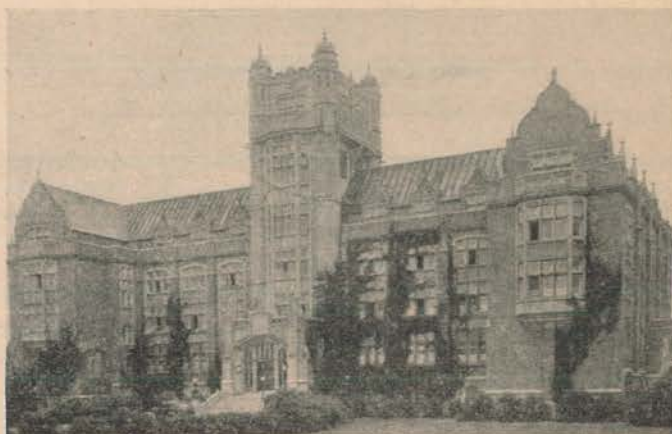
SHAWINIGAN, GRAND MERE

1896

Loyola College

1946

Golden Jubilee



Administration Building

LOYOLA COLLEGE is situated on Sherbrooke Street West, Montreal, between Belmore Avenue and West Broadway. It can be reached easily from the Montreal West Station of the Canadian Pacific Railway, and from any part of the city by connection with Montreal West street cars. It is on the edge of open country, yet still within the metropolitan area. The college grounds cover about fifty acres. The buildings are fire-proof and architecturally beautiful.

Where to go ?

10¢

How to go ?

What to see ?

Archives de la Ville de Montréal

MONTREAL HISTORIC SIGHTSEEING GUIDE

QUALITY SPORTSWEAR

OUR SPECIALTY

100% Camel Hair Coats — Harris Tweed — Suits and Coats

HAND WOVEN

"Scotian Tweed Coats" from Nova Scotia, Canada

SWEATERS

Cashmere, Angora, Shetland, Imported from England

4 Fabrique Street — Phone: 5729

Just around the corner from The Chateau Frontenac

We recommend

HOTEL ST-ROCH

•

In the centre of the City and
Business section

•

FIRE-PROOF THROUGHOUT

•

15 JACQUES-CARTIER SQUARE
230 ST. JOSEPH STREET
Tel.: 2-3921 Quebec

Where Visitors To Quebec
Can Enjoy A Good
French Meal

•

Specializing in Hors d'Oeuvre and
Lobster in season.

•

BEER AND WINE

**NEW YORKER
GRILL**

207 ST. JOHN ST.
Tel.: 20089

Quebec

Canada

MONTREAL...

Meeting place of the United Nations, permanent seat of the International Civil Aviation Organization and other prominent bodies, is one of the busiest crossroads of the world. A cosmopolitan city showing the imprint of three distinct civilizations—the Metropolis of Canada links several continents, by air, through the Northern and Eastern routes. It is the gateway to trans-Atlantic traffic and inland navigation penetrating to the advance posts of Canadian trade and distribution centres.

Enquire about the scenes of interest worth visiting while in Montreal, or the sites convenient for the location of industry.

**MONTREAL
ECONOMIC
AND TOURIST
DEVELOPMENT
★ BUREAU ★**

SUITE 806 — DOMINION SQUARE BLDG.

Valmore GRATTON, Director

Archives de la Ville de Montréal



LOYOLA COLLEGE

LOCATION AND GROUNDS. Situated on Sherbrooke Street, at the extreme western limits of Montreal, on the edge of the open country, yet within a half hour, by tramway, of the heart of the city, the College stands in its fifty acres.

BUILDINGS. The buildings are beautiful architecturally, being types of the English Collegiate Gothic. Dormitories, Refectories, Class Rooms and Recreation Halls, are large and airy, hygienically equipped with the most approved ventilating systems. The large covered rink has an ice surface of 75 x 191 feet, and accommodation for two thousand spectators.

ATHLETIC ACTIVITIES. Ample facilities for all to take part in Football, Lacrosse, Baseball, Field Games, and Track Events, are afforded by a Campus nearly half a mile in circumference. Four Tennis Courts, Hockey, Skiing and Snowshoeing, Basket-ball, Badminton and Hand Ball, etc. Compulsory Physical Training, Military Drill in The Officers' Training Corps.

COLLEGE CURRICULUM. The College Course is of four years' duration and leads to the degree of Bachelor of Arts or to that of Bachelor of Science. Graduates of Loyola College are eligible for advanced standing when they take up further professional studies at Canadian Universities.

HIGH SCHOOL. The L. C. High School, four years' course, while adhering as closely as possible to the traditional Classical System, fully meets in every point modern requirements.

PREPARATORY. For younger boys. This course corresponds broadly to the Seventh Grade in Quebec, and the Senior Fourth in Ontario Schools, but lays special stress on those subjects that are necessary for success in the Classical course. A thorough grounding in English Grammar, Spelling and Arithmetic is given in preparation for the work of the High School.

The Faculty aims not at mere instruction or communication of unrelated facts but at the full and harmonious development of the student. Hence they offer him a curriculum of languages, especially the classics, and sciences, as the most apt instruments for promoting his intellectual growth.

This year the College celebrated its Golden Jubilee. The convocation was attended by His Excellency the Governor General of Canada, Field Marshall, The Right Honourable Viscount Alexander, G.C.M.B. G.C.B. G.C.S.I. D.S.O. M.C. who conferred the degrees, and the Pontifical High Mass was celebrated by His Excellency Most Reverend Joseph Charbonneau, D.D. Archbishop of Montreal, His Excellency Most Reverend Lawrence Whelan, D.D. Auxiliary Bishop of Montreal preached the sermon.

We welcome the delegates of the Summer Schools to Montreal, and hope they will enjoy their visit to this Historic City.

GENERAL INFORMATION ABOUT MONTREAL

Montreal has

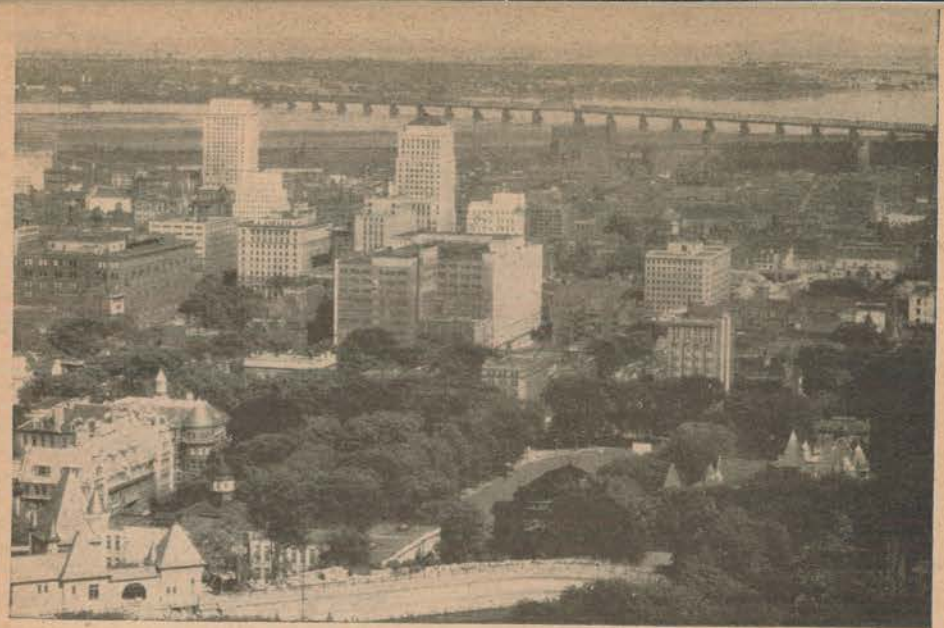
- A population of over a million, including suburbs.
- 750,000 people of French descent language.
- A volume of foreign trade only exceeded by New York.
- Eight hundred and ninety-one miles of streets.
- Seventy-nine public parks.
- The finest natural mountain park of any city.
- Thirty-two miles of water front.
- Harbour capacity for 100 ocean-going steamers at one time.
- The largest cold storage warehouse in the world.
- An area of 50 square miles.
- A civic revenue of approximately twenty-one million dollars yearly.
- The largest building in the British Empire: The Sun Life Building.

Montreal is

- The largest and oldest brewery in America: Molson's.
- The largest city in Canada and seventh largest in North America.
- The port of shipment of one-third of Canada's entire national trade.
- The only "Ocean Port" in the world situated 1,000 miles from the sea.
- The home of the two largest transportation companies in the World (C.N.R. and C.P.R.)
- The only large city in America with complete facilities for winter sports.
- The second largest seaport in America.
- The headquarters for the Canadian fur trade.
- The world's largest grain shipping seaport and has held this supremacy for years.

ILE SAINTE-HELENE.

The barracks and fort at this particularly historic spot, called the last bulwork of French sovereignty over Canada, are worthy of interest. It was at Ile Sainte-Hélène, after the death of the Marquis de Montcalm, that the Chevalier de Lévis, who succeeded him, is said to have thrown his sword into the river after breaking it on his knee and burned the colours of his regiments rather than surrender them.



MONTREAL, THE MOUNTAIN CITY

Modern Montreal is the commercial and financial capital of Canada, teeming with industry under the shade of churches and cathedrals of the old French régime, and where old stone houses still stand as landmarks in its romantic history.

It was in Montreal that the discoverers of a continent made their home, and it is in Montreal that their monuments stand, and here their mementos have been collected in the Chateau de Ramezay, a house used as a home of the Governor, as the headquarters of fur traders, as Benjamin Franklin's print shop, and now is a museum. This city offers today the curious spectacle of a modern commercial capital, growing around an old-world city.

Ancient Montreal was founded because the Lachine Rapids prevented further navigation of the St. Lawrence. Modern Montreal is a great city—the fifth on the continent—for the same reason. Still it is the place where the trails meet—these trails inherited from the intrepid voyageurs of Old and New France. What if ocean greyhounds of half a dozen lines and freighters flying a hundred different house flags have replaced the caravels and pinnacles of Champlain and Maisonneuve—it is still to the foot of the Lachine Rapids that they come. And the inland waterway of the Great Lakes still stretches from Montreal to Duluth, though high-decked passenger boats and long-nosed cargo steamers have replaced the birch-bark canoes of La Salle and the Le Moynes. Land trails, too—it is from Montreal that the Canadian Pacific and the Canadian National Railways start their famous transcontinental trains.

The mightiest estuary, the greatest inland waterway and the largest single transportation systems in the world meet in Montreal beneath the shadow of old Mount Royal, that stray Laurentian, a geological curiosity. Therefore, it was to Montreal that pioneers of commerce came to buy and sell the freights and cargoes of these far-flung trails.

Visitors as well as the residents of the city are thrilled by the spectacular sight of the Metropolis, viewed at night, from the top of Mount Royal. The myriad lights of a city of over a million souls radiating in all directions and scintillating like a huge gem... in the middle distance the dim outlines of the great St. Lawrence river, dotted with harbour lights... the great bridges suggested by their own particular illumination and the lights of the towns shimmering along the far-off shore, seem just a step from the stars twinkling above.

Montreal has advantages unequalled as a convention city, and its old-world characteristics make it a delight for the tourist appreciative of the genuine as well as for the visitor ever on the quest for that which is different.

MONTREAL PLAYS HOST TO TWO EDUCATIONAL CONVENTIONS AT LOYOLA COLLEGE AND SACRED HEART CONVENT

For the fourth consecutive year the Jesuit Fathers of Loyola College, Montreal, will open their doors to Father Daniel A. Lord's Summer School from St. Louis, Mo. The Montreal Catholic Summer School, or as it was formerly known, the Summer School of Catholic Action, will bring to Montreal a faculty of 45 who will conduct no less than 48 different courses ranging from "How to Plan a Party" to "The Catholic Attitude on Capital and Labor."

During the past three sessions of the Summer School no less than 7,000 delegates from every province of Canada and many parts of the United States have filled the spacious college auditorium and the many lecture halls of Loyola to hear the inspiring lectures of Fr. Lord and his associates.

The recently completed central building containing the new gymnasium and a number of large classrooms will prove a welcome addition to the formerly overtaxed accommodation at the disposal of the lecturers.

Once more the beautifully devotional college chapel will be used by Fr. Francis Lebuffe in his courses on Mental Prayer and by Fr. Gerald Ellard in his courses on the Liturgy of the Mass. St. Ignatius parish school on the western fringe on the campus will be the centre of activity for those following Fr. Aloystius Heeg's classes in Catechetical Instruction. The time set aside each evening for entertainment will be spent either in the modern auditorium or in the college stadium. Between lectures the high school and college students in their brightly colored summer clothes, and the more somberly clad Religious will find relaxation on the shaded walks and the cool lawns of the campus.

The problem of arranging accommodations for out-of-towners is in the hands of Rev. Edward Penny, St. Thomas Aquinas Rectory, 872 Convent St., Montreal, P.Q. Fr. Penny has made arrangements with eight convents and colleges, two of the largest Montreal hotels, and a number of private homes, to house visitors to Montreal. Prospective delegates should get in touch with Fr. Penny at as early a date as possible. The date of the Summer School are June 24 to 29.

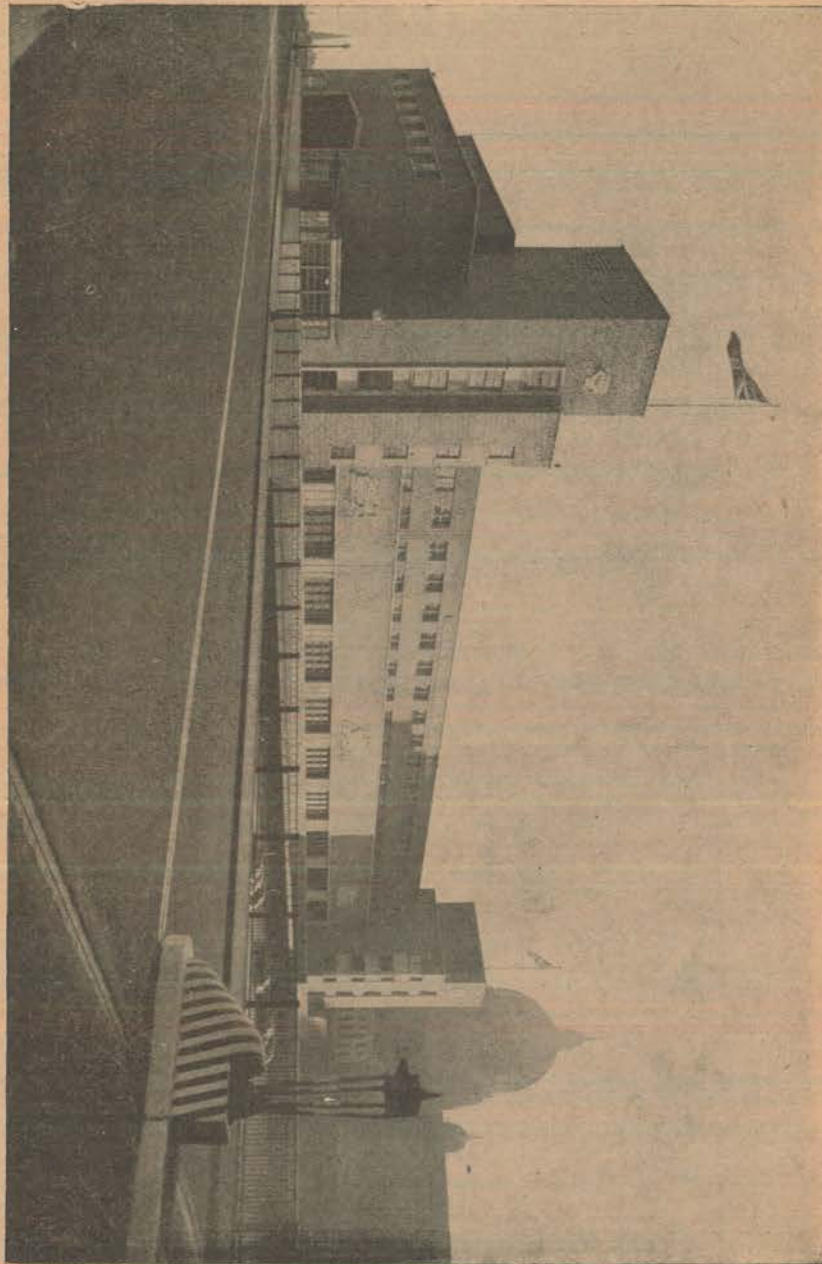
NATIONAL CONVENTION OF CONVENT ALUMNAE

The Canadian Federation of Convent Alumnae are holding their fifth biennial convention and celebrating the fifteenth anniversary of their founding, in Montreal on August 28, 29 and 30. The convention headquarters will be the Convent of the Sacred Heart, Atwater Avenue, where the business and general sessions will be held. The opening luncheon will be at the Windsor Hotel when the federated Alumnae Associations of Montreal will be hostesses.

A convention program has been planned which includes a symposium on the general topic: "Christ in our Lives," and other addresses by experts in the field of education. A Sisters' Conference is being arranged to provide opportunity for religious teachers throughout Canada to meet and exchange ideas. Speaking from various parts of Canada and the United States will be featured on the program and periods for discussion will be provided.

SOCIAL PROGRAM — Social events of the convention will include motor trips to the various educational institutions and points of interest in Montreal, luncheons and teas at the Windsor, Ritz Carlton, Villa Maria, Convent of the Sacred Heart, Cercle Université, and a garden party at the home of Mrs. John Quinn.

This year's convention is being anticipated with special interest, since it is the first convention to be held since the 1939 one in Winnipeg. Various Alumnae groups are already holding convention bridges and teas in order to help defray expenses of their Federation Sister and Alumnae delegates to the convention.



The new C.N.R. Central Station where 65 million passengers have travelled on the 35,040 trains which have operated in and out of this station in a year. In addition, it is estimated that more than 10 million persons have visited this terminal since its official inauguration in July, 1943.

VISIT THE BIRTHPLACES AND HOMES OF QUEBEC'S NATION BUILDERS

Many are Famous Names Associated with the History of French Canada's Cities

DO YOU KNOW?

... That at Rivière-du-Loup was born John McLaughlin, the father of Oregon; Nicolas Perrot, the famous explorer of the American Middle-West, lived at Bécancour across the Saint Lawrence from Trois-Rivières; Norbert Blanchet, born at St-Pierre-de-Montmagny, was the first bishop of Oregon; Louis Blanchette, a native of Saint-Henri-de-Lauzon, was the founder of Saint-Charles, Missouri; LeMoyné d'Iberville, born in Montreal at the North-West corner of Saint-Paul and Saint-Sulpice Streets, established a settlement in Louisiana, and founded Mobile, Alabama; La Vérendrye, born at Trois-Rivières, discovered the Rocky Mountains and the territory of the State of Wyoming; Nicolet, a resident of Québec, discovered Wisconsin and it was after Peter Skene Ogden of Québec that Odgen, Utah, was named; Cavelier de la Salle, who lived near Montréal, was the discoverer of the Mississippi and the founder of Niagara, N.Y., Joliet, Illinois, and Memphis, Tennessee; Prudent Beaudry, a native of Sainte-Anne-des-Plaines, buried in the Côtés-des-Neiges Cemetery in Montreal, was one of the first mayors of Los Angeles, California; the founder of Détroit, Lamothe-Cadillac, was a resident of Montréal; Contrecoeur, born in the village bearing his own name, erected a fort where now stands the city of Pittsburg, Pennsylvania; Duluth, the town engineer of Montreal, after whom the city of Duluth is named, explored Dakota; Repentigny, founder of Sault-Sainte-Marie, had his home at Mascouche; a sulpician priest, François Picquet of Oka, was the founder of a city in Indiana, which now bears his name; LeMoyné de Bienville, a native of Montreal, the brother of Iberville, founded New Orleans, Louisiana, and Biloxi, Mississippi; Jean-Baptiste Faribault, founder of Kankakee, Illinois, was born at Berthier; Jacques Porlier of Montréal founded Green Bay, Wisconsin; Benjamin Gervais of Louisville had a locality named after him in Minnesota; Noël Levasseur of Saint-Michel-d'Yamaska was the founder of Bourbonnais, Illinois; Jean-Baptiste Lefebvre, also of the same place, founded Superior City, Wisconsin; Michel Ménard, born at Saint-Denis-sur-Richelieu, was one of the pioneer settlers of Galveston, Texas; François-Xavier Aubry, a native of Maskinongé was one of the most famous "trait makers" of the western United States and his name was given to Aubry City, Arizona, and Aubry City, Colorado; at Repentigny near Montreal was born Salomon Juneau, founder and first mayor of Milwaukee, Wisconsin; Julien Dubuque, founder of Dubuque, Iowa, was a native of Saint-Pierre-les-Becquets opposite Trois-Rivières; Vital Guérin of Saint-Rémi-de-Napierville founded Saint-Paul, Minnesota; Pierre Ménard, founder of Keokuk, Iowa, the first governor of Illinois, was born at Saint-Antoine-sur-Richelieu; and the son of one of these pioneers, Antoine LeClaire, founded Devenport, Iowa, and turned the first sod of the Rock Island Railway.

Many more names could be added to the list. For the French Canadian explorers launched this continent's Pageant of Progress centuries ago.

QUEBEC RAILWAY MOTOR TOURS

ELECTRIC TOURIST TRAIN

In operation from about 19th June to the end of September (Daylight Saving Time)

A DAY IN QUEBEC

The tourist who has but one day to spare for Quebec is naturally anxious to crowd into it as much as possible, consequently the following Itineraries have been planned to meet these contingencies. (For hours of departure of Sight Seeing Autobus see below).

Sight Seeing by Autobus City of Quebec, Return Fare, \$1.00. — Sight Seeing by Autobus Trip to Ste. Anne de Beaupré and Montmorency Falls, Return Fare, \$2.50.

TRIP to STE. ANNE DE BEAUPRE Forenoon and SEEING QUEBEC Afternoon
Arriving in Quebec by Boat or Train.

8.00 A.M.—Breakfast.

8.45 A.M.—Walk on Dufferin Terrace, Quebec's fashionable promenade, Governor's Garden with Wolfe-Montcalm Monument, Champlain Monument facing Place-d'Armes, General Post Office with Laval Monument opposite the Cardinal's Palace, Montmorency Park and the Grand Battery on the Ramparts.

9.30 A.M.—Trip to Ste-Anne de Beaupré and Montmorency Falls by Sight Seeing Autobus marked "Quebec Railway", Return Fare, \$2.50.

or — Should you prefer to travel by Electric Train — at

9.10 A.M. and 1.55 P.M.—Take special Electric Car opposite Chateau Frontenac marked "Ste. Anne de Beaupré" for St. Paul St. Station, Fare, 7c.

9.30 A.M. and 2.15 P.M.—Take Fast Special Tourist Train for Ste. Anne de Beaupré and Montmorency Falls, accompanied by Guide, Return Fare, \$1.40.

STE. ANNE DE BEAUPRE:—Special Tourist Train arrives at 10.15 A.M. and 2.55 P.M. Church authorities take charge of passengers and show them over the Church, explaining interesting points. One hour is spent here, seeing the Church Park, the Basilica interior, Pyramids of crutches, Statue of Ste. Anne and Virgin, the first Statue of Ste. Anne 1662, the Chapels, Relics in the Vestry, Mass Vestments, made and donated by Anne of Austria, 1665, etc.

THE MEMORIAL CHURCH:—Contains antiques seldom found on this continent. Old Paintings votive offering from Marquis de Tracy, 1666, from Mgr. de Laval 1677, etc.

THE SCALA SANCTA:—A religious structure unique of its kind in America. Scenes from the Holy Land, etc.

THE HOLY SPRING, CEMETERY, opened in 1679. THE CHURCHES STORES, etc.
THE CYCLORAMA OF THE HOLY LAND.

SOME PLACES OF INTEREST IN QUEBEC

City Hall — Herbert Monument — Kent Gate — South African Monument — Garrison Club — St. Louis Gate — Gameau Monument — Parliament Building — Drill Hall and Armories — Good Shepherd Chapel — Montcalm Monument — St. Cœur de Marie Church — Franciscan Sisters Chapel — Martello Tower — Quebec Gaol — Plains of Abraham — Wolfe's Monument — St. Foye Road and Monument — Panoramic View of St. Charles Valley — Victoria Park — St. Roch's Church — Custom House and Ocean Liner Wharves — Sous-le-Cap, the narrowest street in North America — Fargues House — The Old French Quarters — Notre-Dame-des-Victoires Church, over 300 years old — Little Champlain Street and Break-neck steps — Where General Montgomery fell — Land slide 1839 — Grand Battery — Seminary and Laval University — Laval Monument — Post Office — Golden Dog — Basilica — Cardinal Taschereau Monument — Ursuline Convent — House where Montcalm died — Champlain Monument and Dufferin Terrace.



Harbour Front and Mountain.

TROIS-RIVIERES

AN HISTORIC CITY. Trois-Rivières, with its distinctive blending of Old and New World atmospheres was founded July 4th, 1634, by Sieur de Lavolette. It is the second oldest city of Canada. It is only 2 hours drive from Montreal and is a good place to stay overnight before going on to Quebec.

During the first century of its existence it was the most important trading-post in Canada. The mossy stones of its old relics tell to our vivid imagination the adventures and legends of our celebrated coureurs de bois, who planned here their explorations of unparalleled magnitude.

Old houses still comely, and winding tree-shaded streets, dressed in a clean garb of green and flowers, are vestiges of the French Régime which the tourist will admire.

NEST OF ANCIENT VOYAGEURS. Within the walls of the old Fort des Trois-Rivières lived explorers whose names are cast in bronze in American History; such as Jean Nicolet, the first white man to dip paddle in Lake Michigan; Radisson, of a legendary career, the founder of Hudson Bay Company; the great La Verendrye, discoverer of the western half of North America; and others whose memory shall be everlasting.

It is from here that Joliet, Father Marquette and Cavalier de la Salle left on their voyages of discovery through what is now called Michigan, Wisconsin, Iowa and Illinois.

INTERESTING MELANGE. Trois-Rivières, struck with the stamp of history with an heroic past, is actually a fast growing and strictly modern city with all desirable comforts. Quaint and pleasing in its contrasts it has a unique appeal of attractiveness.

Side by side portly dwellings is the largest newsprint mill in the world, the plant of the Canadian International Paper Co., with a daily capacity of 780 tons; in our district is produced one-sixth of the total paper output of whole North American Continent.

The commercial district is active, while the residential section is quiet and peaceful, having a grand air of medieval Bourg of Normandy.

LAND OF FAIRIES AND GOBLINS. The Haunted ruins of Vieilles Forges, seven miles away, should be approached with awe mingled with admiration for the wonderful way nature has entwined with blossomed creepers its dismal stones in a graceful embrace. The skeleton of the Mansion, former abode of gay Seigneurs, is a ghastly contrast to the wilderness surrounding. Here is a land of legend, and the scenery presented is well worthy the trip. Our Guide will be glad to tell you the romance linked with these dilapidated remains which have seen days of greatest splendor.

A special attraction here is the Devil's Fountain from which waters mysterious flames project. Do not miss seeing this natural phenomenon.

VENERABLE OLD CHAPEL. Cap de la Madeleine, in our vicinity, is a place of National Pilgrimage well known after the Miracle of the Ice Bridge. You will see there one of the oldest churches in Canada, and possibly the best preserved in its original condition; it was built in 1714. Its main altar of carved wood was brought from France in 1700; this old church is considered a national treasure.

Hundreds of thousands of people visit this Shrine to Our Lady of the Holy Rosary yearly. Its wonderful site is one of the most picturesque in Canada.

The region around is a well-populated farming country and the hospitable atmosphere that is typically French-Canadian, provides an unusual appeal.

ST. MAURICE VALLEY

THE VALE OF PLENTY. The St. Maurice Valley is rich in a variety of incomparable landscapes, it is a region of mountains covered with primitive forest, affording an admirable panoramic view which nowhere else can be surpassed. It is a hunting and fishing territory of great renown, in the forest wander game of all kinds, the lakes teem with the very species of fish which you are anxious to catch. Lac des Piles, Lac à la Tortue and many other sites in this region have been selected by American millionaires for their Summer homes.

Here the worries of life are entirely forgotten, spend a few days in this country and you will recuperate and leave this haven of rest with your mind and soul thoroughly at rest.

SHAWINIGAN FALLS

MERRY ROLLICKING CASCADES. The Shawinigan Falls, which supply over half the province with light and power, are among the most picturesque sights of Canada. Here the St. Maurice River roams with wild fancies, its rusty-red clamorous waters are hurrying through a bed of rock and fall in foaming cascades, shooting in the air myriads of atoms tinted with the colors of a rainbow; gliding, then tumbling through a rocky gorge, in a splendid disorder, this is among the most alluring scenery that can be imagined.

THE CITY OF SHAWINIGAN FALLS (21 miles from Trois-Rivières), though not very old is all the same quite interesting to visit; overnight it sprang from forest into an important industrial center.

GRAND'MÈRE

A CAPRICE OF NATURE. Grand'Mère, only 8 miles from Shawinigan Falls, took its name from the famous Grand Mother Rock which can be seen there, a natural phenomenon bearing the strong resemblance to an old lady. This town was built after a definite plan and is quite interesting to visit.

Here is the point of departure for sportsmen who wish to go north on a fishing or hunting trip. Well kept roads lead through a country covered with hundreds of beautiful lakes. Connect with our bureau and we will arrange a Fishing or a Hunting trip for you.

Hôtel-Dieu de Saint-Joseph.



Archives de la Ville de Montréal

Courtesy of Montreal Tramways

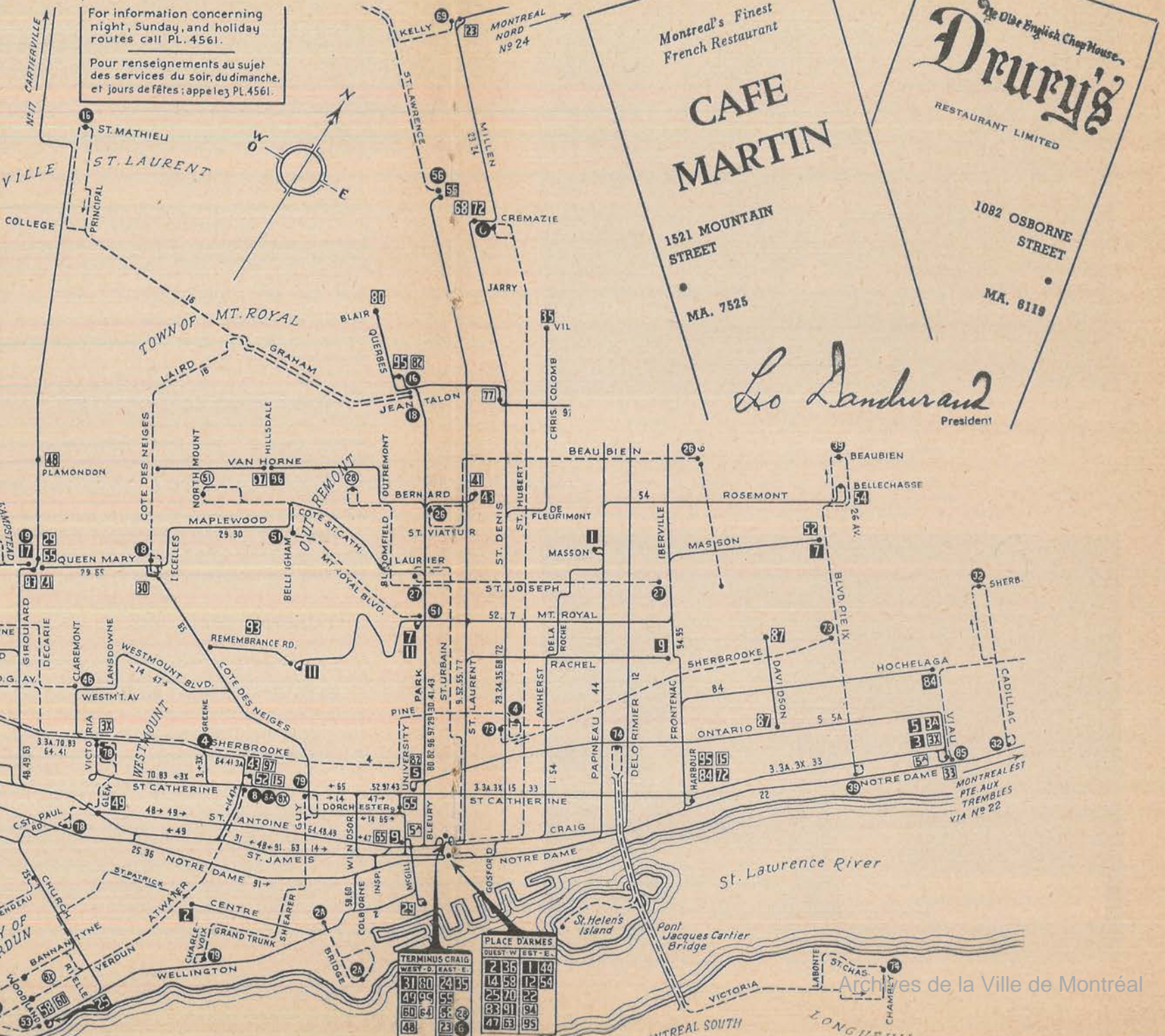
INDEX OF ROUTES + LISTE DES LIGNES

TRAMWAYS	
REGULAR WEEKDAY ROUTES SERVICE REGULIER JOURS DE SEMAINE	
1 AMHERST	44 PAPINEAU
80 BLEURY	43 PARK AVE-ATWATER
17 CARTIERVILLE	9 RACHEL-WINDSOR
2 CENTRE	93 REMEMBRANCE RD.
65 CÔTE DES NEIGES	54 ROSEMONT
87 DAVIDSON	47 ST ANTOINE
12 DELORMIER	3 ST CATHERINE-N.D.G.
95 FRONTENAC	3A ST CATHERINE-NONKLAND
14 GUY-BEAVER HALL	24 ST DENIS-SAULT
84 HOCHELAGA	68 ST DENIS-CRÉHAZIE
91 LACHINE	39 ST DENIS-ST. COLOMB
92 LACHINE-EXT.	72 ST DENIS-FRONTENAC
40 MONTREAL NORD	31 ST HENRI-N.D.G.
11 MOUNTAIN	49 ST HENRI
7 MOUNT ROYAL	55 ST LAURENT-CRÉHAZIE
52 MT ROYAL-ATWATER	56 VAN HORNE
22 NOTRE DAME E.	58 VAN HORNE-EXT.
25 NOTRE DAME C-ST PAUL	50 WELLINGTON
34 NOTRE DAME V. H. HARD	70 WINDSOR-MTLW.
8 ONTARIO	63 WINDSOR-SNOWDON
23 OUTREMONT	
RUSH HOUR ONLY HEURES D'AFFLUENCE SEULEMENT	
62 BLEURY-J. TALON	23 ST DENIS-AHUNTSIC
94 FRONTENAC	48 ST HENRI-SHOWDON
30 OUTREMONT	63 SHERBROOKE
41 PARK AVE-SNOWDON	64 SHERBROOKE
3X ST CATHERINE-VICTORIA	97 VAN HORNE-ATWATER
15 ST CATHERINE-ATWATER	60 WELLINGTON
AUTOBUS	
REGULAR WEEKDAY ROUTES SERVICE REGULIER JOURS DE SEMAINE	
68 AHUNTSIC-CARTIERVILLE	L1 LAFLÉUR
26 BEAUBIEN	U2 LASALLE
2A BRIDGE ST.	53 LASALLE-VERDUN
B1 BROADWAY	74 LONGUEUIL
84 ROUT DE L'ILE	81 MT ROYAL BLVD.
32 CADILLAC	39 BLVD. PIE IX
- CHAPELLE	89 PTE. AUX TREMBLES
18 CÔTE DES NEIGES-J.TALON	73 SHERBROOKE E.
21 DESORMEAUX	- STELLEN'S ISLAND
78 GLEN	27 ST JOSEPH BLVD.
78 GUY-PTE. ST. CHARLES	67 ST MICHEL
19 HAMPSTEAD	46 TERREBONNE
83 HOCHELAGA-GEO.V	6 VERDUN-ATWATER
58 BORDEAUX	4 WESTMOUNT-N.D.G.
30 LACHINE-MTLW.	16 VILLE ST. LAURENT
RUSH HOUR ONLY HEURES D'AFFLUENCE SEULEMENT	
- ANGUS	28 OUTREMONT
BX WOODLANDS	- JULICOEUR

NOTE: - FOR INFORMATION REGARDING OBSERVATION CAR AND CHARTER SERVICE CALL PL. 4561

TERMINUS CRAIG	
WEST - D.	EAST - E.
81 80	24 95
49 95	55
60 64	57 26
48	23 37

PLACE D'ARMES	
QUEST - W.	EST - E.
2 36	1 44
14 58	12 54
25 70	22
83 91	94
47 53	95



For information concerning night, Sunday, and holiday routes call PL. 4561.
Pour renseignements au sujet des services du soir, du dimanche, et jours de fêtes: appelez PL. 4561.

Montreal's Finest French Restaurant
CAFE MARTIN
1521 MOUNTAIN STREET
MA. 7525

The Old English Chop House
Drury's
RESTAURANT LIMITED
1082 OSBORNE STREET
MA. 8119

Lo Sandurand
President

Going Places in Montreal

Tour No. 1 — COMPLETE TOUR OF MONTREAL

Fare: \$1.50 plus 15% tax — Time: about 2½ hours

Summer schedule: May 15 to Oct. 15—10.00 A.M. & 11.00 A.M.—2.00 & 3.00 P.M.

This motor coach tour takes the visitor through the shopping district, financial section, stopping at the famous Notre-Dale Church and passing by Bonsecours Market, the Château de Ramezay (1705), also giving a view of the Harbour and the old French quarter, Bonsecours or sailors' church, Lafontaine Park. The next stop is made at the Midgets' Palace, then proceeding through the French residential area, and passing the new University of Montreal. Another stop is made at the Wax Museum and St. Joseph's Oratory, (Brother André), after which the visitor is taken to the summit of Westmount Mountain, 621 feet high, from which point one obtains a magnificent panoramic view of the city and surrounding country. Returning through the City of Westmount and passing along Montreal's Fifth Avenue, concluding an interesting and educational tour.

Tour No. 2 — INDIAN RESERVATION

Fare: \$2.50 plus 15% tax — Time: about 3½ hours

Summer schedule only: May 15 to Oct. 15 — 3.00 P.M.

This tour is something entirely different and does not duplicate any of the others, inasmuch as it takes the visitor out of the city, crossing the Majestic St. Lawrence River, via the new Jacques-Cartier Bridge and passing the summer resorts of Longueuil and St. Lambert, then following the South Shore of the St. Lawrence and passing the town of Laprairie, which is the site of the first railroad built in Canada. A stop is made to give a magnificent view of the famous Lachine Rapids, which are acknowledged to be the longest and severest of any in the St. Lawrence River. A further stop is made at the wayside shrine of the Indian maiden, Katheri Tekakwita, meaning the Lily of the Mohawks. Continuing this drive we next arrive at the Indian village of Caughnawaga, where you will be entertained by a group of Iroquois Indians, headed by their Chief and attired in native garb. The next stop is made at the quaint old Indian church where you will be shown some of the bones of the Indian maiden and the famous wampum belt (belt of peace) valued at \$50,000.00 and many other Indian relics. The return trip is made via the new Honoré Mercier Bridge, and passing through the quaint old French village of LaSalle and along the boardwalk for a distance of 3 miles through the City of Verdun, concluding a tour long to be remembered.

Tour No. 3 — LAKESHORE DRIVE

Fare: \$1.00 plus 15% tax — Time: about 2 hours

Summer schedule only: May 15 to Oct. 15 — 2.00 P.M. and 7.00 P.M.

This is another beautiful drive which takes the visitor along the shores of the St. Lawrence River and Lake St. Louis passing many beautiful country residences with their extensive lawns and gardens. Also several of the most popular golf clubs on the Island of Montreal. A stop is made for refreshments before returning to Montreal via the historical City of Lachine, the town of Montreal West and the City of Westmount.

Tour No. 4 — WEST ISLAND TOUR

Fare: \$2.50 plus 15% tax — Time: about 3 hours

Summer schedule only: May 15th to Oct. 15 — 2.00 P.M.

For the visitor who appreciates the beauty of the countryside we strongly urge to take this tour which follows the St. Lawrence River until you reach the western limits of the Island, where a stop is made for refreshment and to enjoy a grand view of the Lake of the Two Mountains. Returning along the shore of the Ottawa River, passing through the summer resorts of Senneville, Ste. Genevieve, Roxboro, Saraquay and Cartierville, where can be obtained a magnificent view of Mount Royal, St. Joseph's Shrine and the University of Montreal, and finally back to the Hotel in time for dinner.

MONTREAL TOURS — WINDSOR HOTEL — LA. 2429

Archives de la Ville de Montréal



DOMINION SQUARE



LAFONTAINE PARK.

POINTS OF INTEREST

(Figures appearing at the end of the line indicate Tramway routes to reach location from Peel & St. Catherine.)

ASSOCIATIONS & SOCIETIES

Advertising Club	Mount Royal Hotel	PL. 7777
Good Roads Association	620 Cathcart St.	LA. 1105
Kiwanis Club	Windsor Hotel	PL. 5738
Knights of Columbus	1191 Mountain St.	MA. 9301
Lions Club	614 St. James St. W.	
Masonic Temple	Sherbrooke W. at St. Mark	FI. 2279
Montreal Amateur A. A.	2070 Peel St.	HA. 2233
Province of Quebec Safety League	Mount Royal Hotel	PL. 7777
Rotary Club	Mount Royal Hotel	PL. 3369
Royal Automobile Club of Can.	620 Cathcart St.	LA. 1105
Touring Club of Canada	761 St. Catherine West	PL. 8077
Y.M.C.A. (Central)	1441 Drummond St.	MA. 8331
Y.M.C.A.	1124 Dorchester W.	MA. 7366
Montreal Tourist & Convention Bureau	1010 St. Catherine W.	LA. 5411
Travelaide Bureau	1010 St. Catherine W.	PL. 8077

BRIDGES (Entrance & Exit)

Bout de L'Île Bridge, Eastern outlet — 3 or 3a to 22 to 86.
 Lachapelle Bridge, North West outlet — 65 to 17.
 Galipeault Bridge, Western outlet.
 Jacques Cartier Bridge, South Eastern outlet — 3 or 3a to 12.
 Mercier (Honore) Bridge, South Western outlet — 70 or 83 to 91 to L1.
 Pie IX Boulevard Bridge, North East outlet — 3 or 3a to 24 to 40.
 Viau Bridge, Northern outlet — 3 or 3a to 24.
 Victoria Bridge, Southern outlet — 70 or 83 to 58 to 2a.

CHURCHES & SHRINES

Christ Church Cathedral, St. Catherine W. at University St. — 3 or 3a.
 Notre Dame Church, Place d'Armes — 70 or 83.
 Notre Dame de Bonsecours, St. Paul East — 70 or 83 to 22.
 Reparation Chapel (Shrine), Pte-aux-Trembles — 3 or 3a to 22 to 86 to Chapelle Bus.
 St. Andrew and St. Paul, Sherbrooke St. W. — Walk North Peel & West Sherbrooke.
 St. George's Church, Osborne at Windsor Sts. — 70 or 83.
 St. Germain, Cote St. Catherine Road (Outremont) — 3 or 3a to 28.
 St. James Cathedral, Dominion Square — Walk south to Dominion Square.
 St. Joseph's Oratory, Queen Mary Road — 65.
 St. Patrick Church (Irish), Dorchester St. West — 47.
 St. James Church, St. Catherine E. at St. Denis St. — 3 or 3a.

HOSPITALS & INSTITUTIONS

Alexandra, 203 Charron St. — 70 or 83 to 58.
 Bordeaux Jail, Gouin Blvd. (Bordeaux) — 3 or 3a to 55 to 56.
 Children's Memorial, 1620 Cedar Avenue (Westmount) — 65.
 Deaf & Dumb Institute (women), 3725 St. Denis St. — 3 or 3a to 24.
 Deaf & Dumb Institute (men), 7400 St. Lawrence Boulevard — 3 or 3a to 55.
 Franciscan Monastery, 2010 Dorchester St. West — 3 or 3a to Fort Street.
 Grey Nuns, Dorchester West & Guy Sts. — 3 or 3a to Guy Street.
 Hotel Dieu, Pine Avenue W. at Park Avenue — 43 or 97.
 Jewish General Hospital, Côte des Neiges — 65 to 18.
 Montreal General Hospital, Dorchester St. East — 3 or 3a to 55.
 Notre Dame, Sherbrooke St. East — 3 or 3a to 44.
 Royal Victoria, Pine Avenue W. at University St., 43 or 97 to 4.
 St. Luke's, St. Denis at Dorchester Sts. — 3 or 3a to 24, 68 or 35.
 St. Mary's, 3860 Lacombe St. — 65 to 18.
 Western, Dorchester at Atwater Sts. — 3 or 3a to Atwater.
 Catherine Booth Maternity Hospital, 4400 Walkley Avenue — 3 or 70.

COLLEGES — CONVENTS — SEMINARIES

Couvent du Sacre-Coeur, 3635 Atwater Ave., Tel. FI. 1726 — 3a.
 Congregation of Notre Dame, Atwater Ave. at Sherbrooke St. — 3a.
 Diocesan Theological College, 3473 University — Walk north Peel, east Sherbrooke.
 Grand Seminary, 2065 Sherbrooke St. W. — 65 to Sherbrooke.
 Holy Name Convent, 628 St. Catherine Rd. — 3 or 3a to 29.
 Jacques Cartier Normal School, Sherbrooke E. at Calixa-Lavallee — 3 or 3a to 1 or 54.
 Loyola College, Sherbrooke W. (Montreal West) — 3 or 70.
 Macdonald College of Agriculture, St. Anne de Bellevue — Provincial Transport Bus.
 McGill University, Sherbrooke St. W. — Walk north Peel, east Sherbrooke.
 Montreal College, Sherbrooke at Atwater Sts. — 3a.
 Notre Dame College, Queen Mary Road — 65.
 Plateau High School (French), Park Lafontaine — 3 or 3a to 1 or 54.
 Polytechnique School, St. Denis at St. Catherine Sts. — 3 or 3a.
 Royal Victoria College, Sherbrooke at University — Walk north Peel, east Sherbrooke.
 Seminary of Philosophy, St. Sulpice Road — 3a.
 Seminary of St. Sulpice, Notre Dame St. W. — 70 or 83.
 University of Montreal (new), Maplewood Avenue — 3 or 3a to 29.
 Ecole Technique, Sherbrooke St. West — 43 or 97.

LIBRARIES, INSTITUTES, BUILDINGS

Aldred Building, Place d'Armes — 70 or 83.
 Bank of Montreal, Place d'Armes — 70 or 83.
 Bell Telephone Building, Beaver Hall Hill — 47.
 C.I.L. Building, Beaver Hall at Dorchester — 47.
 City Hall & Annex (Montreal), Notre Dame St. East — 70 or 83 to 22.
 Court House (old), Notre Dame E. at St. Gabriel — 70 or 83 to 22.
 Court House (new), Notre Dame E. at St. Gabriel — 70 or 83 to 22.
 Dominion Square Building, St. Catherine at Peel St. — at Peel & St. Catherine.
 Institut du Radium, Ontario at Pie IX — 3 or 3a to 39.
 Masonic Temple, Sherbrooke St. West — 65.
 Municipal Library, Sherbrooke St. East — 3 or 3a to 1 or 54.
 Outremont City Hall, Cote St. Catherine Road — 3 or 3a to 29.
 Royal Bank of Canada, St. James St. West — 70 or 83.
 Sun Life Building, Dominion Square — at Dominion Square.
 University Tower Building, St. Catherine at University — 3 or 3a.
 Westmount City Hall, 4425 Sherbrooke St. West — 3 or 3a.
 Windsor Station, Windsor at Osborne Sts. — 70 or 83.

PARKS & LOOKOUTS

Botanical Gardens, Sherbrooke St. at Pie IX — 3 or 3a to 39.
 Chalet Mount Royal & Lookout, Mountain Top (Altitude 700') — 65 to 93.
 Dominion Square, Peel and Dorchester Sts.
 Lafontaine Park & Lighted Fountain, Sherbrooke at Amherst — 3 or 3a to 1 or 54.
 Jeanne Mance & Lookout, Park Avenue at Rachel St. — 43 or 97.
 Mount Royal Cross (illuminated), Mountain Top (Altitude 785') — 65 to 93.
 Pratt Park (Lookout), Lajoie Ave. at Dunlop St. (Outremont) — 3 or 3a to 96 or 97.
 St. Helen's Island Par, kVia Jacques Cartier Bridge — 3 or 3a to 12 and 74.
 Westmount Lookout, Summit Circle (Altitude 621') — 3 or 3a to 14.
 Westmount Park (Flower clock), Sherbrooke St. W. (Westmount) — 3 or 3a.

ART GALLERIES & MUSEUMS

Bell Telephone Museum & Lookout, Bell Telephone Bldg., Beaver Hall Hill — 47.
 Chateau de Ramezay, Notre Dame S., Opp. City Hall — 70 or 83 to 22.
 Commercial & Industrial Museum, 540 LaGauchetiere E. — 3 or 3a to 24 or 68.
 McGill University Museums, Sherbrooke St. W. — Walk north Peel, east Sherbrooke.
 Montreal Art Gallery, Sherbrooke St. W. — Walk north Peel, west Sherbrooke.
 Palais des Nains (Midgets Palace), 961 Rachel E. — 3 or 3a to 9.
 Musée Historique Canadien (Wax Museum), 3715 Queen Mary Rd. — 65.

POINTS OF INTEREST OUTSIDE CITY LIMITS

	Mileage from Prov. Tourist Bureau
"Aux Deux Lanternes", French Restaurant, Route 11	9
"Au Vieux Moulin"	Repentigny, Route 2 20
Battlefield Lachine	Lachine, Qué. 9
Beaver Restoration Colony, Can	Route 29, 4 miles N.E. of Pont David 17
Board Walk	Wellington St. Verdun, Que. 3
Caughnawaga Indian Reserve	South West over Mercier Bridge 12
Dominion Government Rifle Range	Notre Dame St. E. 10
Fort Senneville Ruins	Senneville, Route 37 21
Lachine Rapids	LaSalle Blvd. (Ville LaSalle) 9
Maccdonald College of Agriculture	St. Anne de Bellevue, Route 37 20
Military Hospital	St. Anne de Bellevue, Route 37 21
Mt. St. Anthony Reformatory Prison	Longue Pointe, Sherbrooke East 9
Old Fort de Longueuil	Longueuil, over Jacques Cartier Bridge 7
Old Fort Laprairie	Laprairie, over Victoria Bridge 14
Reparation Chapel. (Shrine)	Pointes-aux-Trembles 11
St. Jean de Dieu Asylum	Longue Pointe, Notre Dame W. 7
St. Vincent de Paul Prison	St. Vincent de Paul, Route 29 10
Tomb of Katerie Teka Kivita	La Prairie, Route 3 15
Trappist Fathers & Agricultural Col.	Oka—Route 29 30
Verdun Asylum	LaSalle Blvd., Verdun 5

Westmount

Westmount lookout is a very good place to view the City. Principal features are visible and copper arrows inlaid in the Parapit point out the following features:

Heron Island	Bell Telephone Building	Victoria Bridge
Nun's Island	Adirondack Mountains	Montreal Harbour
City of Verdun	Lachine Rapids	Rougemont
St. Bruno Mountain	Green Mountains	Mount St. Hilaire
Mount Johnson	Town of Laprairie	Aldred Building
Sun Life Building	Town of St. Lambert	St. Hubert Airport
Royal Bank Building	Mother House, C of N. D.	

THEATRES IN CENTRE OF CITY

CAPITOL THEATRE 890 St. Catherine W. LA. 6253	ORPHEUM THEATRE 525 St. Catherine W. MA. 2153
HIS MAJESTY'S THEATRE 1421 Guy St. FL. 2488	PALACE THEATRE 698 St. Catherine W. LA. 0121
IMPERIAL THEATRE 1420 Bleury St. LA. 6188	PRINCESS THEATRE 46 St. Catherine W. LA. 5332
LOEW'S THEATRE 954 St. Catherine W. LA. 5244	<i>Phone above for information as to time of shows.</i>



The largest Office Building
in the British Empire



FRENCH HOMESTEAD

WHAT TO SAY and HOW TO SAY IT !

Here you see useful English sentences translated into their charming French equivalent (in Italics). You'll hardly ever need them — French Canadians will understand your English, of course, — but you may like to study a few of these words you'll hear... and take them home to try on the neighbours! The first sentence is always given in English. The Second is a French translation of the English as it would be written. The third gives you the pronunciation in phonetic sounds.

MOTORING

Which is the way to...?

Quel est le chemin pour aller à...?
kell ay luh shuh-menn pour allay ah...?

Is it far from here?

Est-ce loin d'ici?
ess lwan dee-see?

Are we on the right road to...?

Sommes-nous sur la bonne route pour aller à...?
sum noo sir la bun root poor allay ah...?

How far is it to...?

Combien y a-t-il d'ici à...?
cohm-b'yan yahteel dee-see ah...?

Show me the way

Montrez-moi le chemin
montray-mwah luh shuhmenn

Where does this road lead?

Où conduit cette route?
oo condwee set root?

Is this the way to...?

Est-ce ici le chemin de...?
ess ee-see luh shuh-menn duh...?

Is the road easy to find?

Trouve-t-on facilement le chemin?
troov-tohn fassseelmahn luh shuh-menn?

How many miles?

Combien de milles?
cohm b'yan duh mill?

Where is the first gas station?

Où est le premier poste de gazoline?
oo ay luh pruhmee-ay pusst duh gazzoleene?

I want... gallons of gas please.

Je veux... gallons de gazoline, s'il vous plaît.
juh vuh... gall-ohn duh gazzo-leene, sil-voo-play.

I want one quart of oil too

Je veux une pinte d'huile aussi
juh vuh uhn pant' dweell ossee

I want 1 pint of oil

Je veux une chopine d'huile
juh vuh uhn sho-peen dweel

Check the oil please

Vérifiez l'huile, s'il vous plaît.
very-fee-ay lweel, sil-voo-play

Check the water in the radiator and the battery please

Vérifiez l'eau dans le radiateur et la batterie, s'il vous plaît.
very-fee-ay low dahn luh radee-ahter ay la batt'ree sil-voo-play

How much?

Combien?
cohm-b'yan?

Can you give me a road map of the province?

Pouvez-vous me donner une carte routière de la province?
poo-vay voo muh donnay uhn cart' roo-tee-air duh la pro-vance?

That is all, thank you.

C'est tout, merci.
say too, mair-see.

Good by!

Au revoir!
oh revwahr!

POST OFFICE, TELEPHONE and BANK

Where is the post office?

Où est le bureau de poste?
oo ay luh burow duh pusst?

Where is the bank?

Où est la banque?
oo ay la bahnk?

Where can I telephone?

Où pourrais-je téléphoner?
oo poo-rayje tay-lay-funny

Where is the phone?

Où est le téléphone?
oo ay luh tay-lay-fun?

I don't understand.

Je ne comprends pas
juh nuh cohm-prahn pa.

Where can I get money changed?

Où pourrais-je faire changer de l'argent?
oo poo-rayje fair shahn-jay duh lahr-jahn?

Will you cash this cheque for me?

Voulez-vous me changer ce chèque?
voolay-voo muh shahn-jay suh sheck?

Will you give me american money?

Voulez-vous me donner de l'argent américain?
voolay-voo muh donnay duh lahr-jahn amaireecahn?

Where can I mail this letter?

Où pourrais-je mettre cette lettre à la poste?
oo pooray-je mettre sett leitr' ah la pusst?

Do you sell stamps?

Vendez-vous des timbres?
vahnday-voo day tamb?

CITY

Can you show me to a good restaurant?

Pouvez-vous m'indiquer un bon restaurant?
poo-vay-voo mandeekay un bohn resstohran?

Is it far from here?

Est-ce loin d'ici?
ess lwan dee-see?

Straight on?

Tout droit?
too drwah?

To the right?

A droite?
ah drwoht?

To the left?

A gauche?
ah gohsh?

Over there?

Là-bas?
lah-bah?

In what street?

Dans quelle rue?
dahn kel rue?

Close by?

Près d'ici?
Pray dee-see?

I must go up the street?

Il faut monter la rue?
eel foe montay la rue?

I must go down the street?

Il faut descendre la rue?
eel foe dessandr' la rue?



THE Windsor
ON DOMINION SQUARE

Where you can enjoy MEALS in the FRENCH STYLE
in the country at the famous



Eddy
Prevost
Mgr.

Dinner
\$1. & \$1.25

Cap St. Martin, Route No. 11 (20 minutes north Dominion Square).
At the "TWO LANTERNS INN" you discover the real 17th Century
atmosphere of the old provinces of France.

Tel.: ABORD-A-PLOUFFE — Exch. 515

St. Rose bus stops at door.

PROVINCIAL TOURIST BUREAU
DOMINION SQUARE
MONTREAL TOURIST & CONVENTION BUREAU
TRAVELAIDE BUREAU
MEZZANINE FLOOR — DOMINION SQUARE BLDG.
T. EATON CO. TOURIST INFORMATION
GROUND FLOOR — CENTRE FRONT

Where all Travel information will be cheerfully given by employees
who will supply you with Booklets Free of Charge.

HISTORIC TOURIST GUIDES on sale at: United Cigar Stores, Peel St.; Central Book Stores;
Hotel and Railway news stands — Price: 30¢

Published by BULL DOG PUBLISHING CO., 7215 Casgrain St., Montreal, Tel. DO. 1852



CANADA'S FINEST FURS

Fashions of Quality

CHILDREN'S WEAR

ENGLISH SPECIALTIES

HOLT RENFREW

SHERBROOKE AT MOUNTAIN STREET

HOW TO COMBINE
BUSINESS with PLEASURE

If you are interested in trade possibilities with
Canada or any aspect of Canadian business, we in-
vite you to drop in for a chat while visiting Montreal.
Our Business Development Department at Head
Office is a mine of information on Canadian business,
industry, and markets.

- Travellers Cheques cashed
- Letters of Credit negotiated
- Complete banking service for tourists

**THE ROYAL BANK
OF CANADA**

Head Office: Montreal

OVER 550 BRANCHES FROM COAST TO COAST



NOTRE DAME CHURCH,
PLACE D'ARMES.

Notre Dame is the name given to the Parish Church of Montreal ever since Paul Chomedey de Maisonneuve landed at Place Royale on May 18th, 1642.

Originally built at the water's edge, it was moved to its present site by the Sulpicians in 1672. The present building dates from 1824.

"Le Gros Bourdon," the largest bell in America, and which weighs twelve tons, is hung in the western tower. It is rung only on the most important occasions.

The church accomodates approximately 15,000 persons, while the beauty and richness of its decoration enhances the stateliness of its architecture.

Within the church is the beautiful chapel of Notre Dame du Sacré Cœur, in which there are some exceptional historical pictures depicting the early days of Montreal.