



CITY OF MONTREAL C.N.R.
 Plan showing
 Arrangement of valves etc. to permit
 the installation of water meters to meter
 the entire water supply of the CITY OF WESTMOUNT

- Yellow Mountain Top System
- Blue Côte des Neiges System
- Orange Outremont System
- Green Low level System
- Green Δ Proposed Meters for City of Westmount.
- Green \odot Valves to be closed for Metering
- Green \otimes New valves to be installed & closed for Metering
- Red \square Permanent Division Valves between system
- Green --- New water mains required to balance system etc.

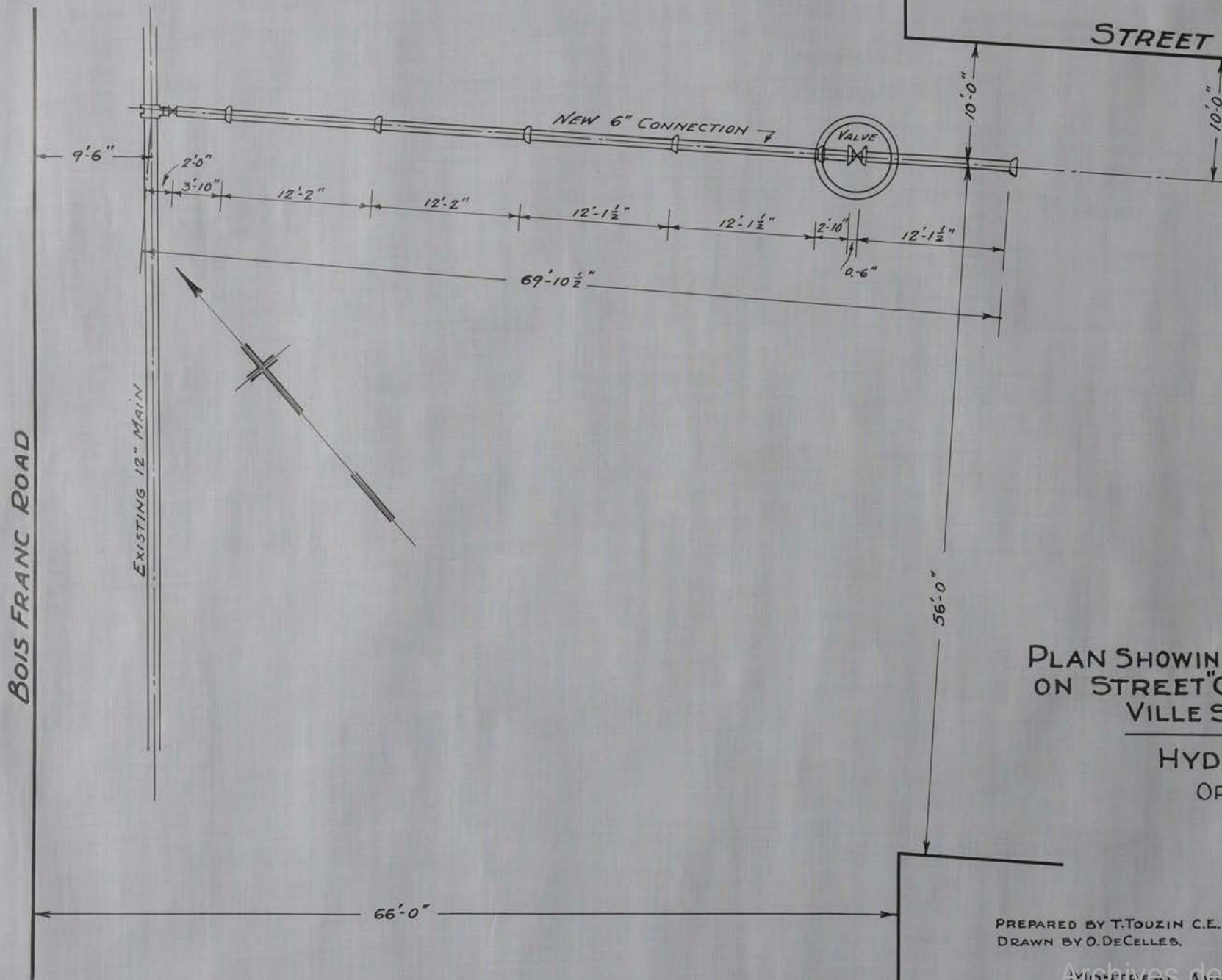
SCALE = 500' = 1"

MONTREAL, DECEMBER, 1940.

Prepared by *Frank J. Souds*

Arthur J. Little
 Supervising Engineer
 Archives de la Ville de Montréal
 Department of Public Works.

De la Sabonne
STREET "G"



PLAN SHOWING NEW 6" CONNECTION
ON STREET "G" WARTIME HOUSING CO.
VILLE ST. LAURENT P.Q.

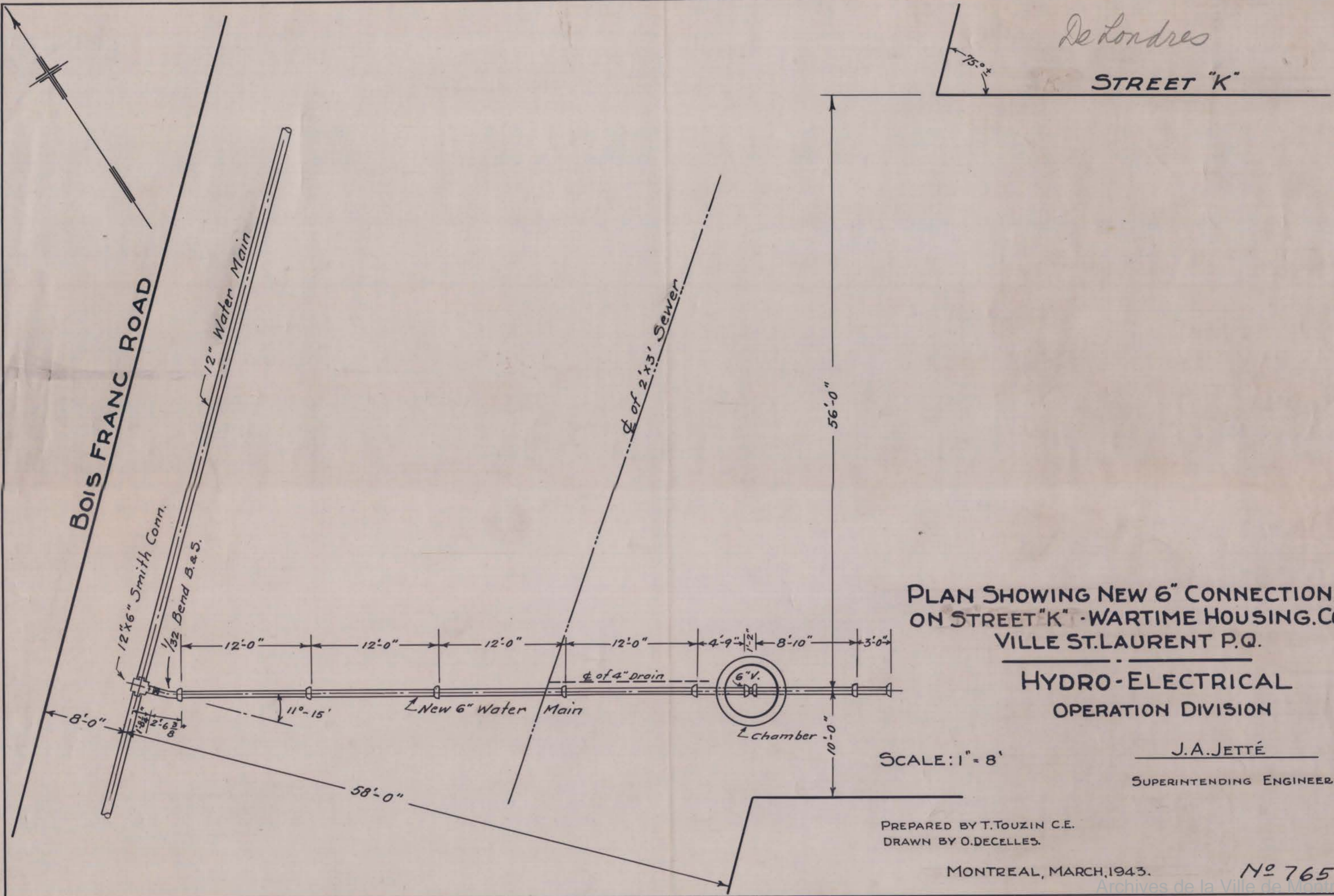
HYDRO-ELECTRICAL
OPERATION DIVISION

J.A. JETTÉ

SUPERINTENDING ENGINEER.

PREPARED BY T. TOUZIN C.E.
DRAWN BY O. DECELLES.

Archives de la Ville de Montréal
MONTREAL, QUEBEC, 1943. No 765
SCALE: 1" = 8'



De Londres

STREET "K"

BOIS FRANC ROAD

12" Water Main

2'x3' Sewer

12"x6" Smith Conn.
1/32" Bend B. & S.

New 6" Water Main

4" Drain

6" V.

Chamber

PLAN SHOWING NEW 6" CONNECTION
ON STREET "K" - WARTIME HOUSING CO.
VILLE ST. LAURENT P.Q.

HYDRO-ELECTRICAL
OPERATION DIVISION

J.A. JETTÉ

SUPERINTENDING ENGINEER.

SCALE: 1" = 8'

PREPARED BY T. TOUZIN C.E.
DRAWN BY O. DECELLES.

MONTREAL, MARCH, 1943.

No 765