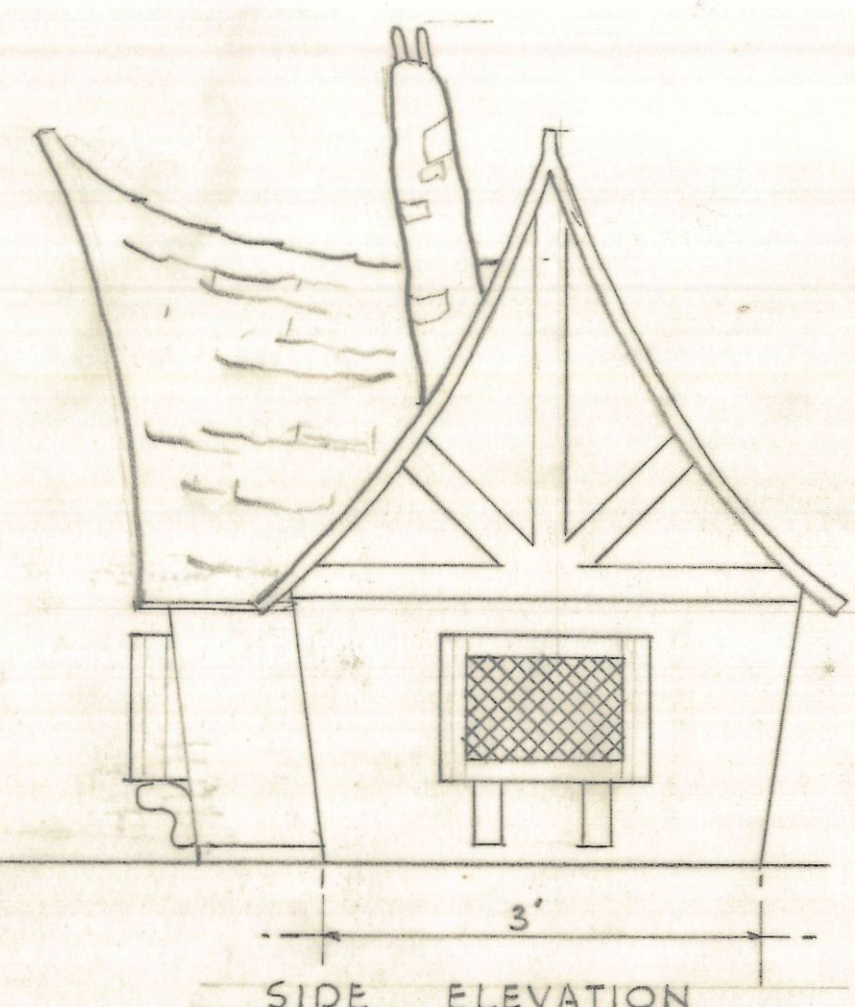


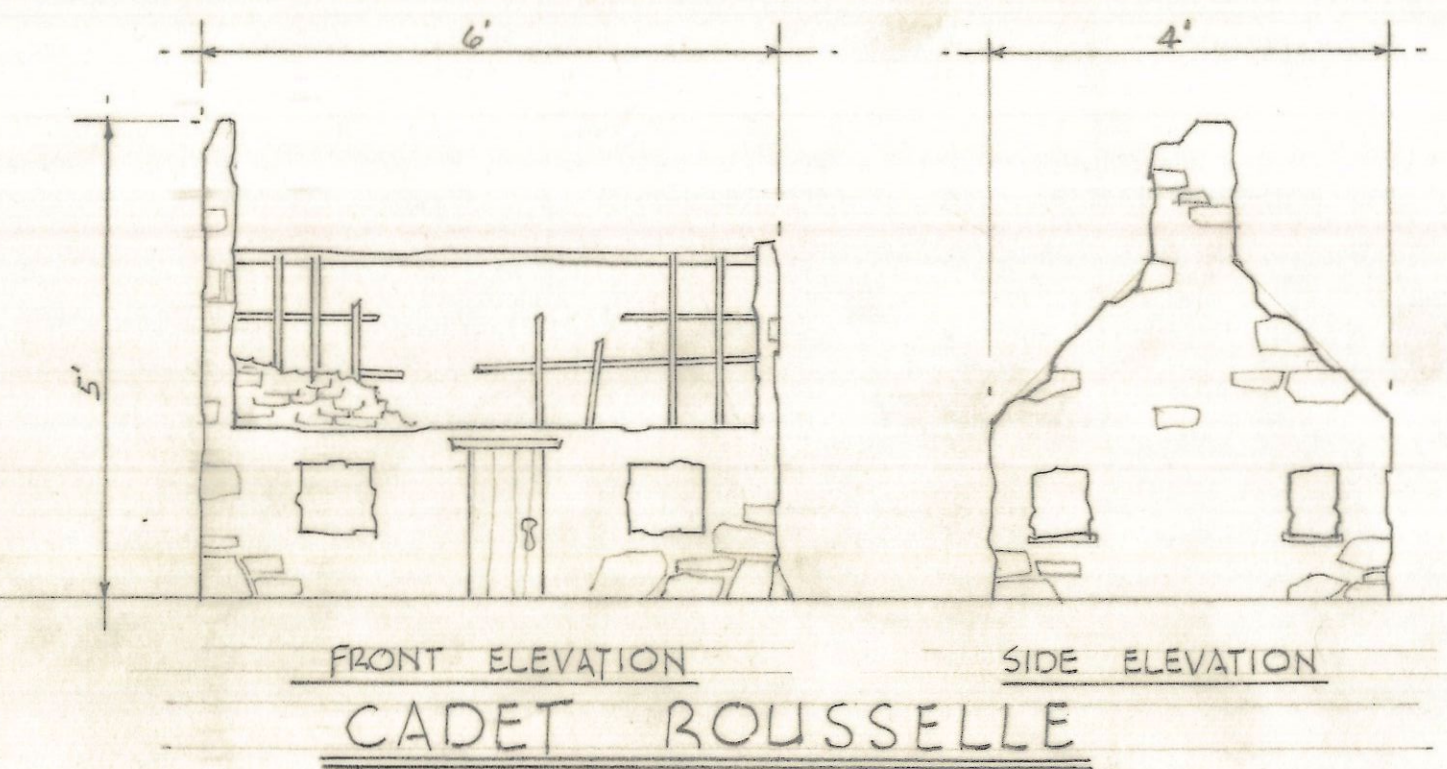
FRONT ELEVATION



SIDE ELEVATION

HOUSE OF THE SEVEN DWARFS

SCALE : 3/4" = 1'-0"



FRONT ELEVATION

SIDE ELEVATION

CADET ROUSSELLE

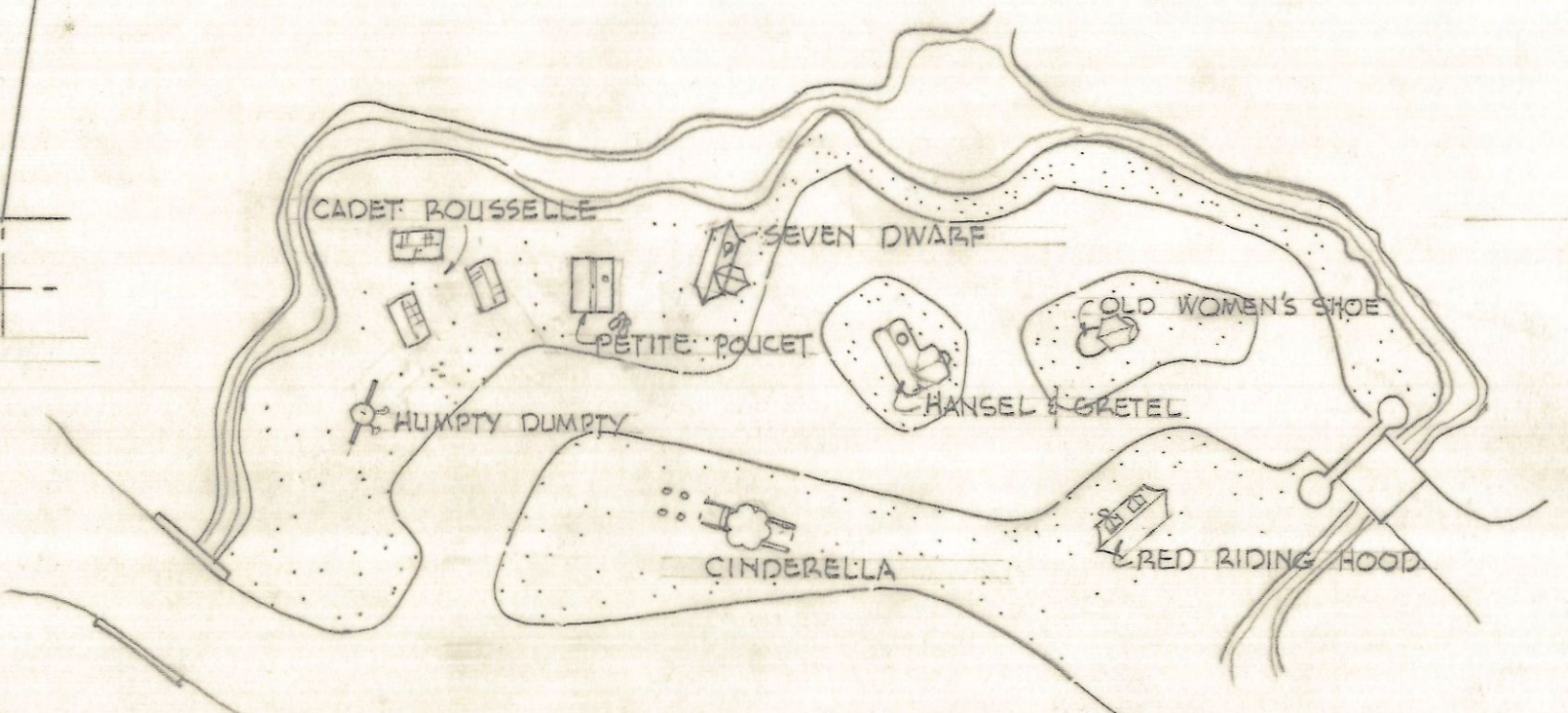


NOTCH POST

TYPICAL SIGN FOR VILLAGE

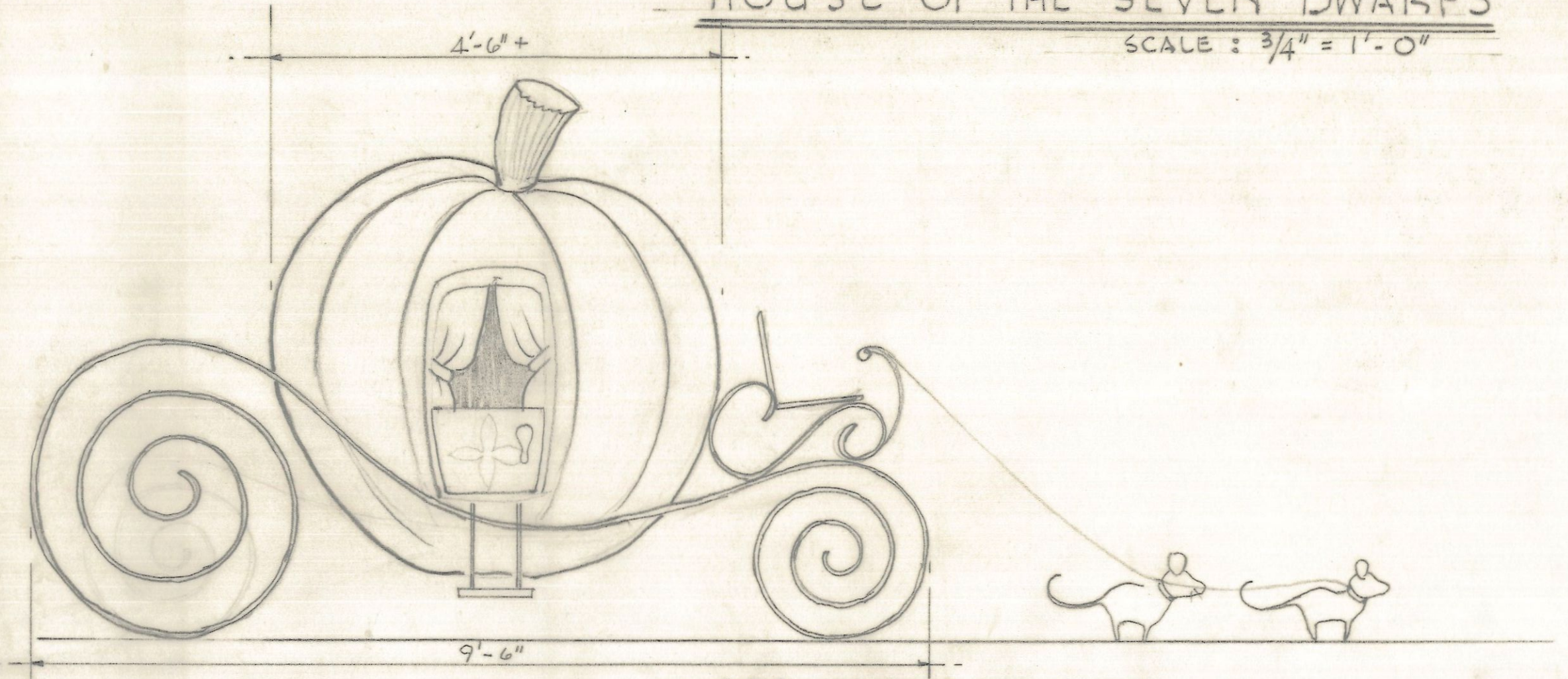
SCALE : 1 1/2" = 1'-0"

- NOTE :
- SIGNS TO BE MADE FOR :
 - LITTLE RED RIDING HOOD
 - CADET ROUSSELLE
 - THE SEVEN DWARFS
 - CINDERELLA
 - OLD WOMAN IN THE SHOE
 - HANSEL AND GRETEL



VILLAGE PLOT PLAN

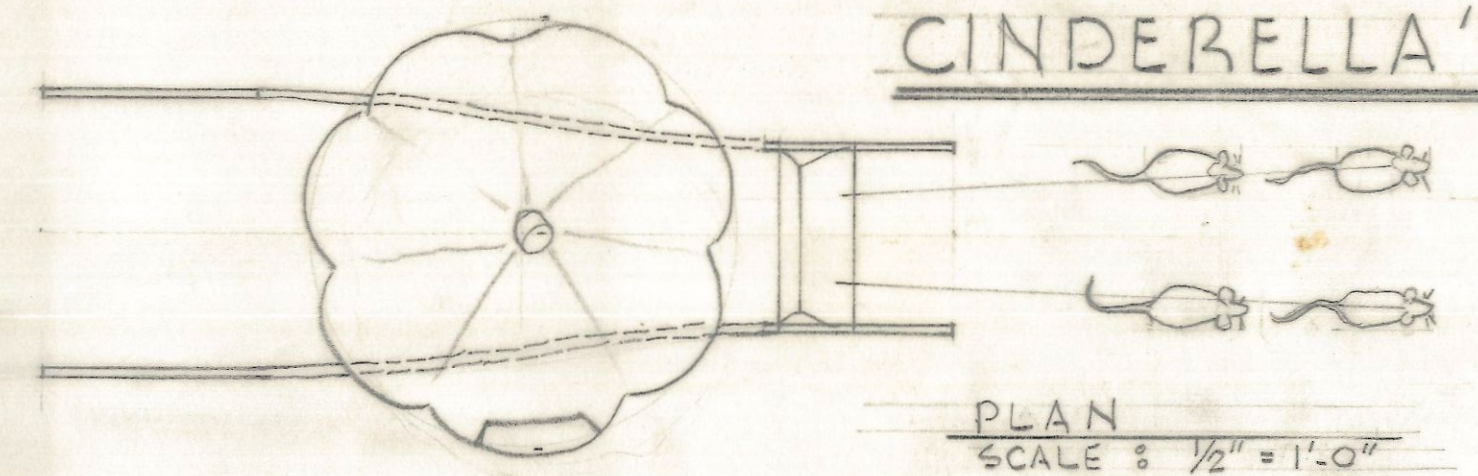
SCALE : 1" = 20'-0"



SIDE ELEVATION

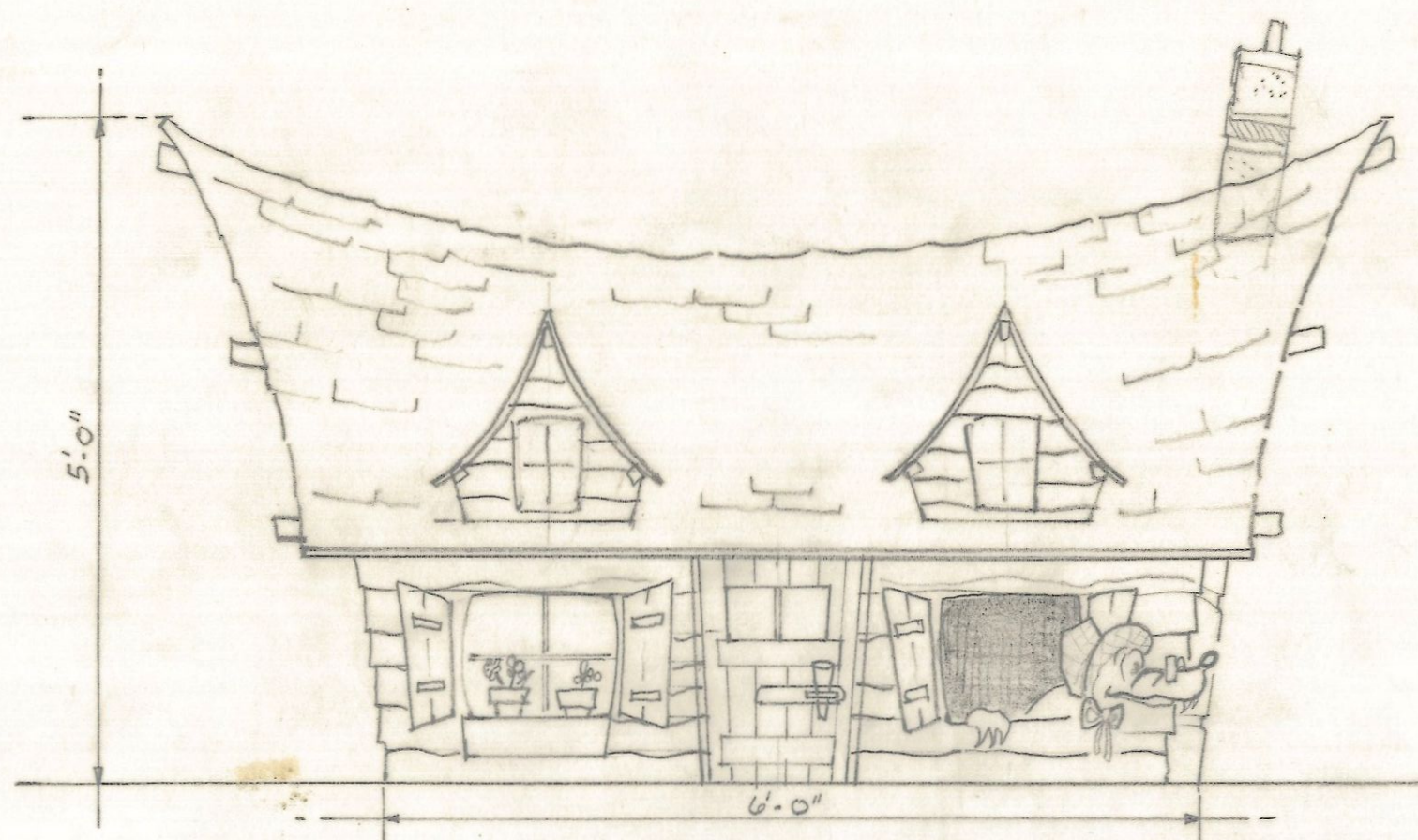
SCALE : 3/4" = 1'-0"

CINDERELLA'S COACH

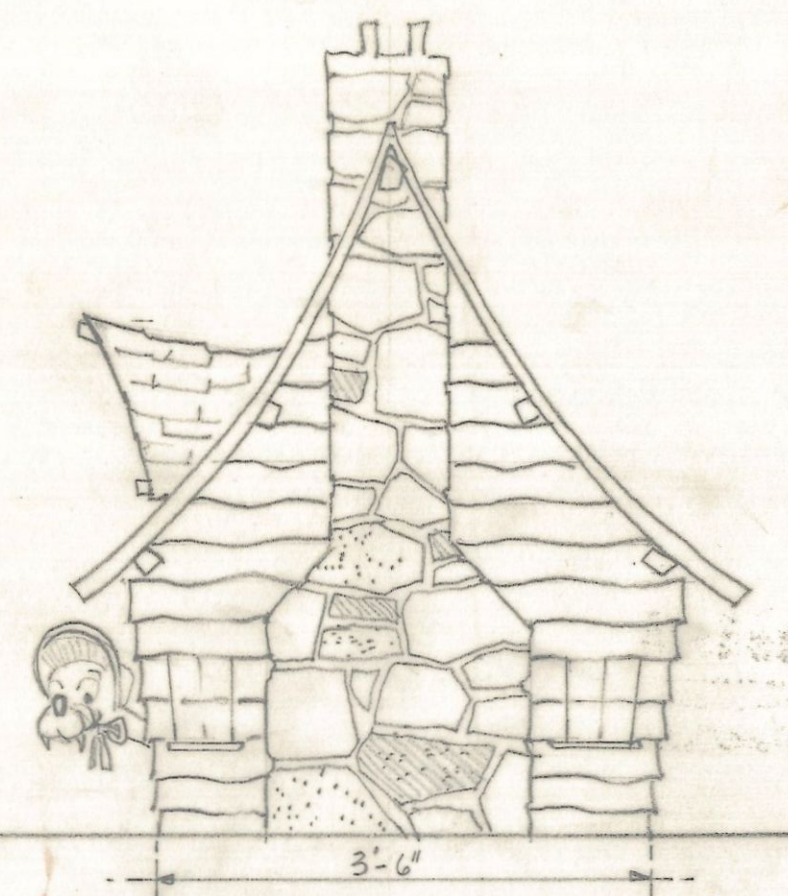


PLAN

SCALE : 1/2" = 1'-0"



FRONT ELEVATION



SIDE ELEVATION

LITTLE RED RIDING HOOD

BUILDING STUDIES THE VILLAGE

McFadzean & Everly, Ltd.
LANDSCAPE ARCHITECTS • LAND PLANNERS
6555 COTE DES NEIGES RD. • MONTREAL P.Q. CANADA