

Plan and Survey Letter "A" referred to in the annexed Act of deposit thereof by John S. Cartwright and James Bell Forsyth, Esquires, by their attorney Andrew McGill Esq., identified by their signatures this 12th day of August 1842 to be further identified by the signatures of the purchasers respectively of the lots thereon designated on the days on which their respective Deeds of Sale are dated, and of the Signatures of us Notaries:-

(Signed) J.S. Cartwright,  
J.B. Forsyth,  
by their Attorney  
(Signed) A. McGill,  
" " M. Solomon H. Griffin, N.P.

Signatures of purchasers or Venders and dates of deeds:-

(Signed) his mark "X" Thomas Howard - 13 August 1842  
" " " " Robert Black - 15 " " "  
" John Johnston Beers - 20 " " "  
" George Konacher - 27 " " "  
" Dr. Picault, 2 deeds  
lots 12 & 32<sup>A</sup> - 17 Sept " "

(Signed) his mark "X" Michael Hughes - 4 Oct 1842  
" John Leeming - 27 Sept " "  
" Joseph Leeming - 27 " " "  
" John Hurdle, no. 65 - 28 " " "  
" Damase Robitaille  
his mark "X" Michael Hughes 4 Oct " "  
" John Ha... - 10 " " "  
" Thomas McGinn - 10 " " "  
" John McDonald - 10 " " "  
" Maria Daming Worth - 10 " " "  
" Edwd. Worth - 10 " " "  
" Andr. Palmer  
" Robt. Cooke  
" J.H. Kerr, by H. Whicksteed  
" D. Daly  
" Alex. Comeau  
" Mary Ann Tabin 3 June " "  
" Thomas Johnson 3 " " "  
" C. Adams  
" John McDonald

Plan referred to in a deed of sale bearing date this 14th December 1844, by and from John S. Cartwright Esq, by his Attorney Arthur Ross, Esq, to and in favour of Edward Grieve, passed before H. Griffin and confrères, Notaries.  
Identified by the signatures of the parties hereunto and of us Notaries.

(Signed) J.S. Cartwright,  
by his Atty,  
" " Arthur Ross.

Plan referred to in a deed of partage, made and passed before J.C. Griffin and Colleague, Notaries and bearing date this 24th August 1847, and signed by the parties for its identification.

(Signed) D. Daly  
" " A.C. Webster  
(Signed) G. K.

Note- Since the Survey was made and plan drawn "Peel Street" has been extended to 60 feet in breadth thus throwing all the lots and streets above the same 30 feet further to the north.

Building Lots			
No 1	Breadth	Depth	West side
2	140ft	462ft	2416ft. Et.
3	"	"	"
4	"	"	"
5	"	"	"
6	"	"	"
7	"	"	"
8 to 12 in.	"	"	"
12-31	"	"	"
32-49	"	"	"
49-54	"	"	"
55-56	"	"	"
57-68	"	"	"
69	"	"	"
70-79	"	"	"

Park Lots			
No 1	Breadth	Depth	West side
7	120	380	
8-20	120	330	
21-40	120	356	

# Survey of an Estate

The Property of J.S. Cartwright & J.B. Forsyth

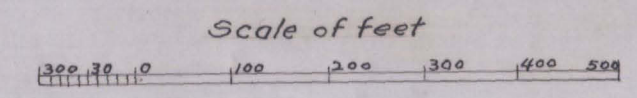
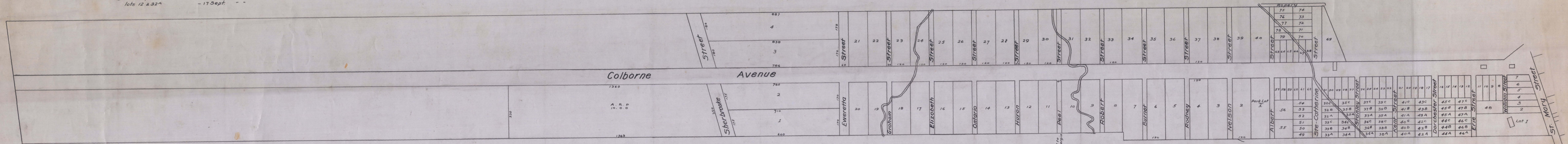
Fronting on St. Mary Street, Quebec Suburbs

within the limits of the

## City of Montreal

1842

Surveyed by Geo. Kemp, under the direction of Chas. Atherton, C.E.



Width of Street altered to 60 feet. See note in margin (Signed) G. K.

Reproduction sur toile du plan original No 2337, année 1842, conservé aux Archives judiciaires du District de Montréal Archives municipales de Montréal, le 14 oct 1948.

98  
Archives  
Plans  
parcellaires

1842-1 (455)