

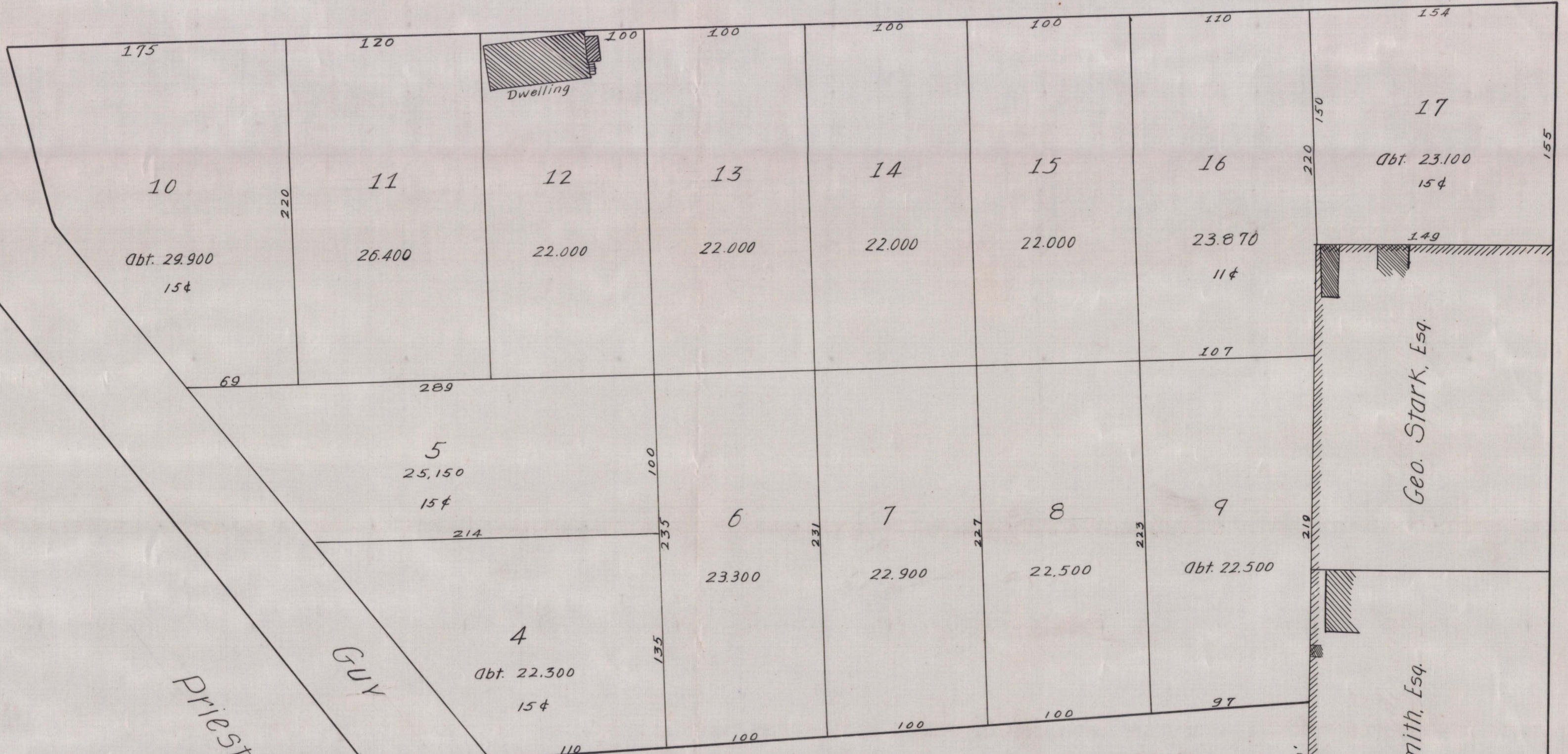
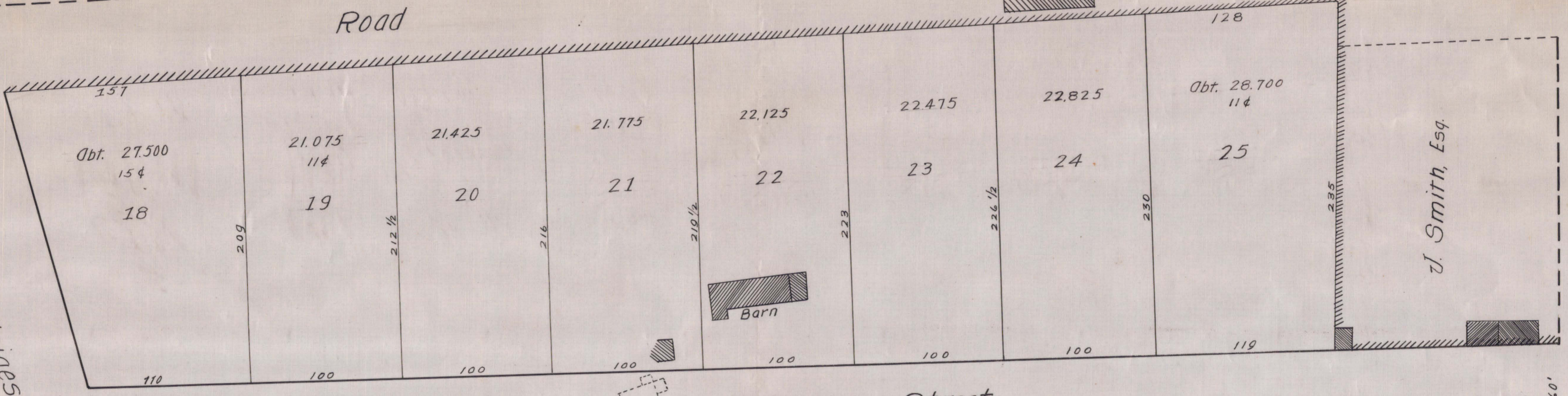
Estate Monk

J.J. Dav, Esq.

G. Lomer, Esq.

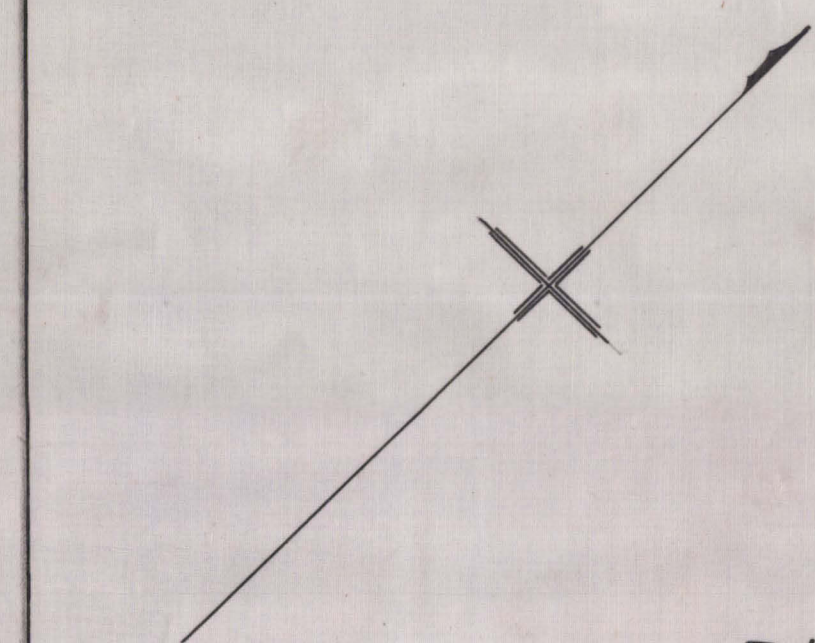
H.B. Smith, Esq.

Côte des Neiges Road



Mc Gregor Street

Summerhill Avenue



Plan of Property
 belonging to
John Auld Esq.
 St. Antoine Ward
 Montreal
 Showing its subdivision into
Villa-Lots

Montreal, 6th May 1867 Surveyed & drawn by

Jos. Rielle
Prov. Land Surveyor

Scale 60 feet to 1 inch
English measure

Street

Street

Street

Sherbrooke Street

Simpson Street

J. Smith, Esq.

Geo. Stark, Esq.

W. Smith, Esq.

D. Lewis, Esq.

A. Urquhart, Esq.

Barn

Dwelling

Priest's Farm