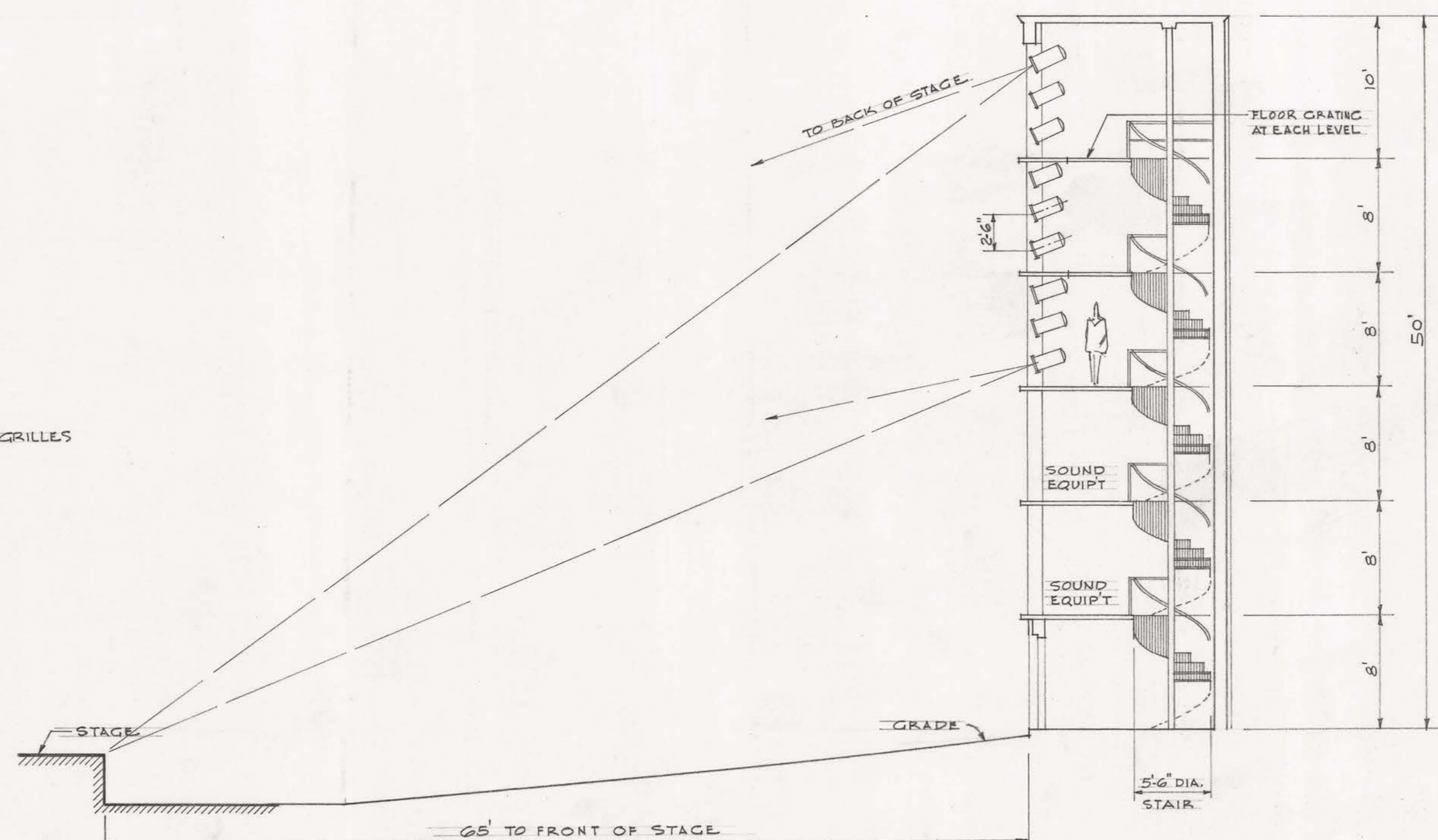
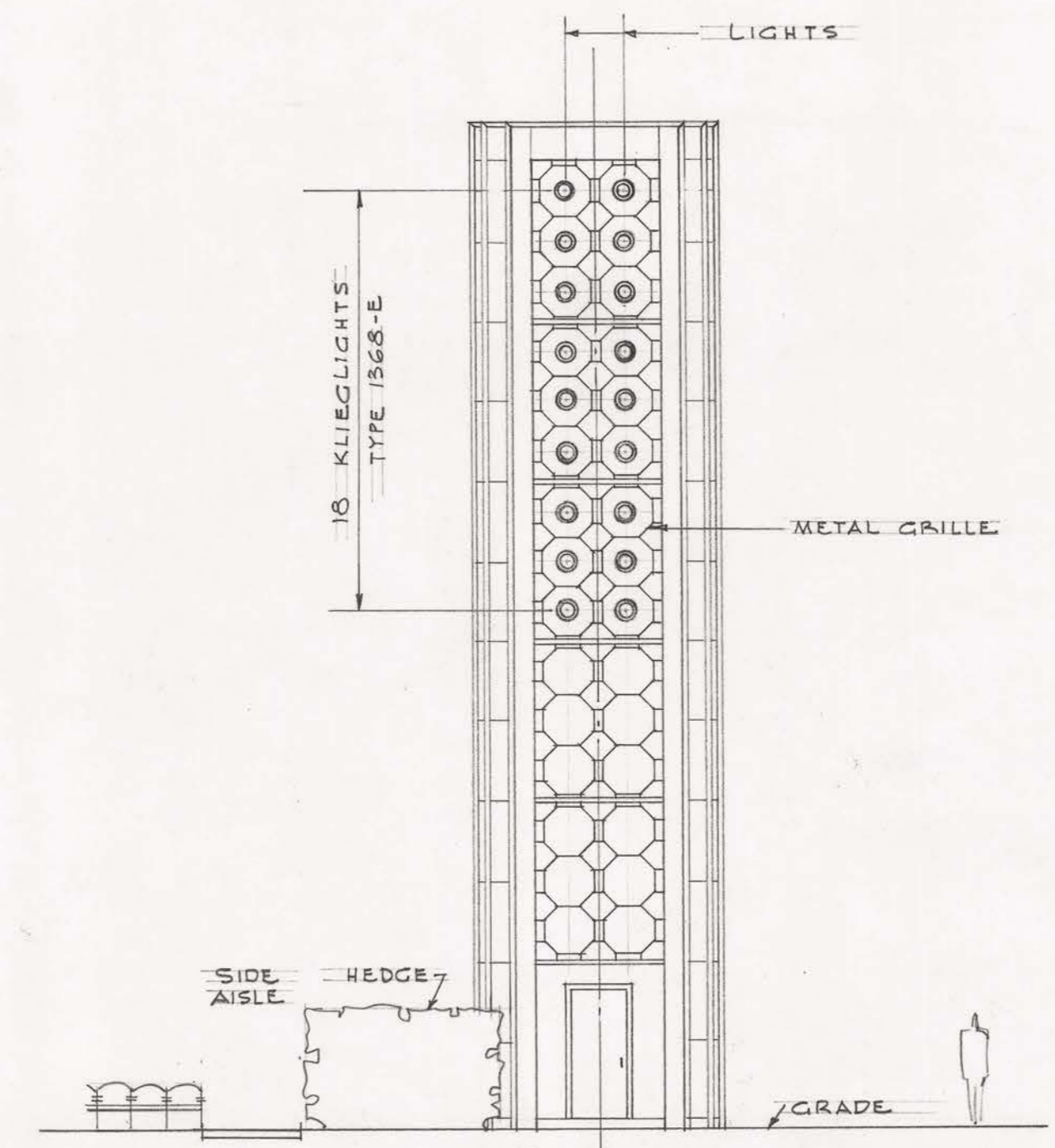


SIDE ELEVATION

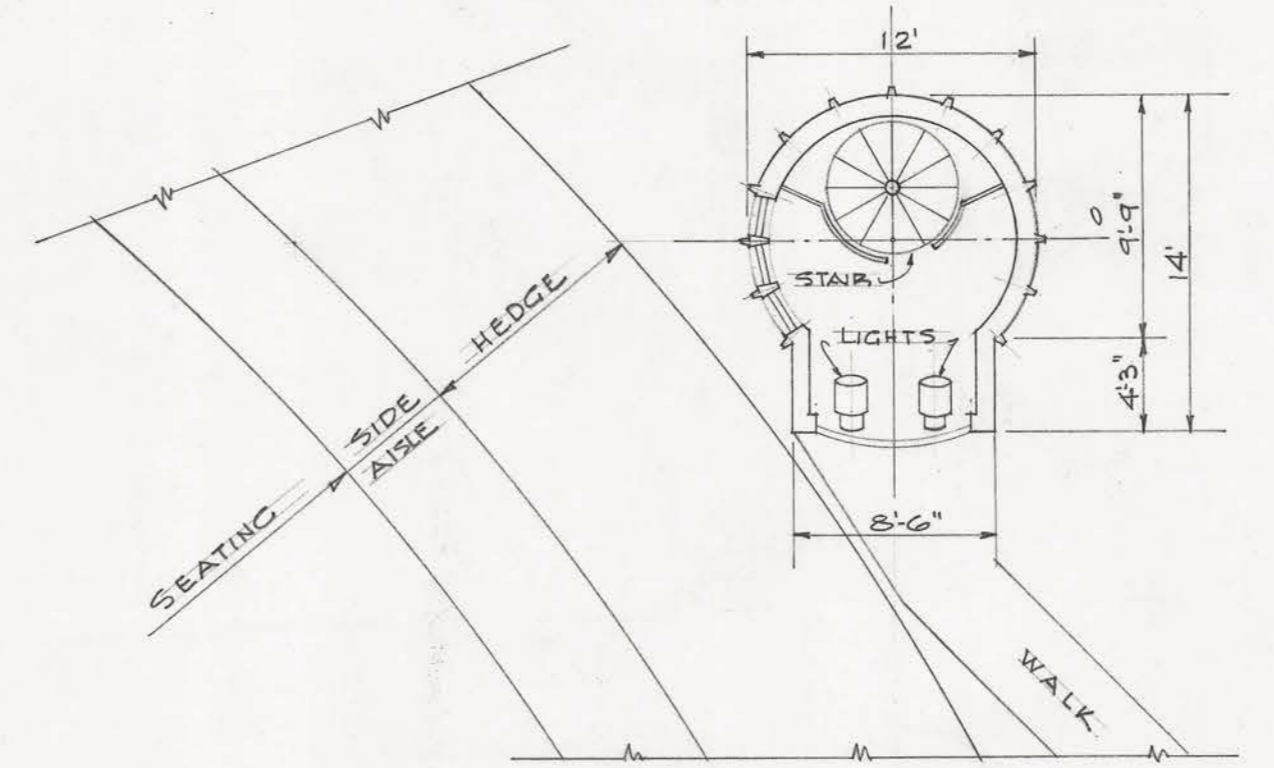


SECTION

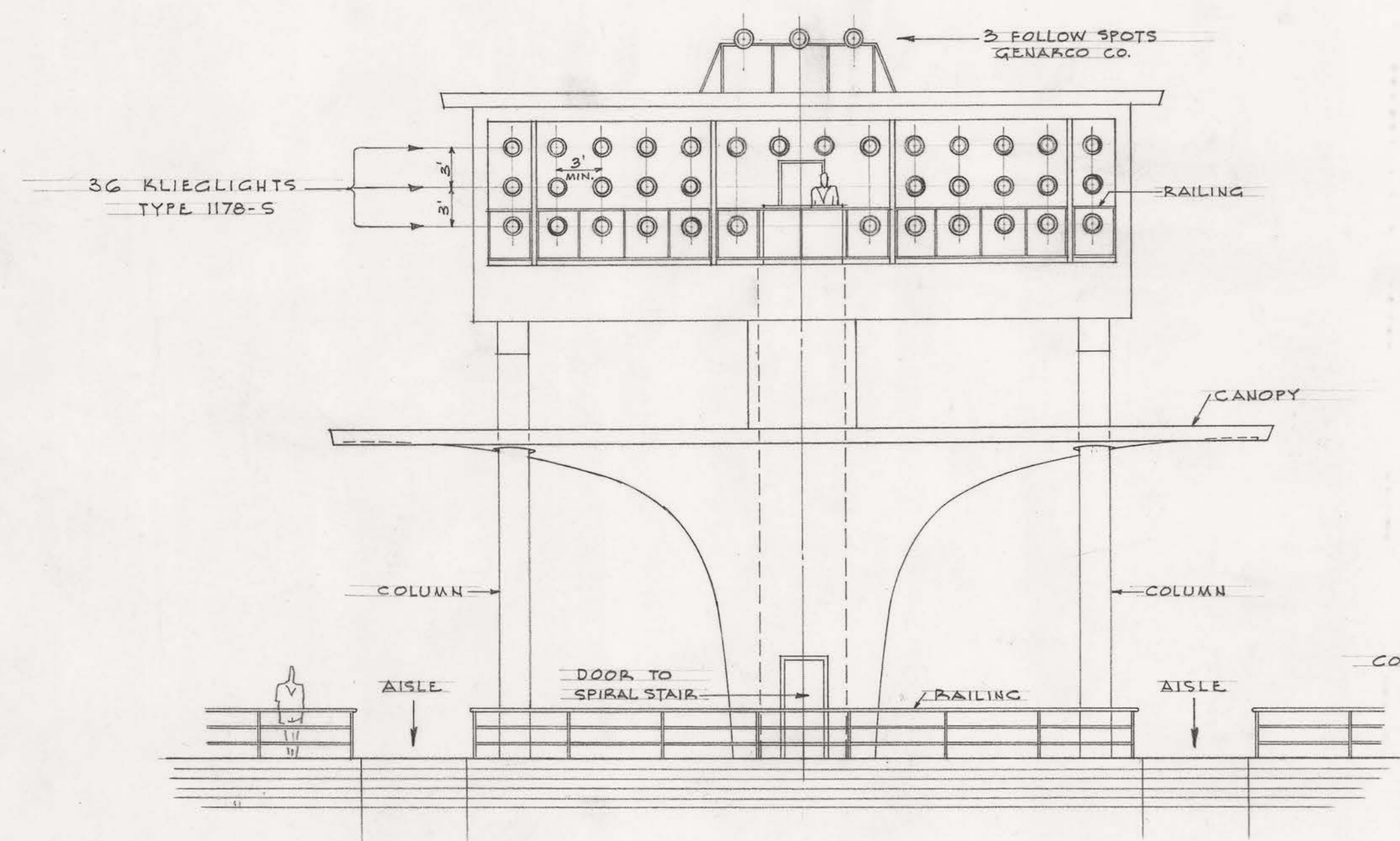


ELEVATION FACING STAGE

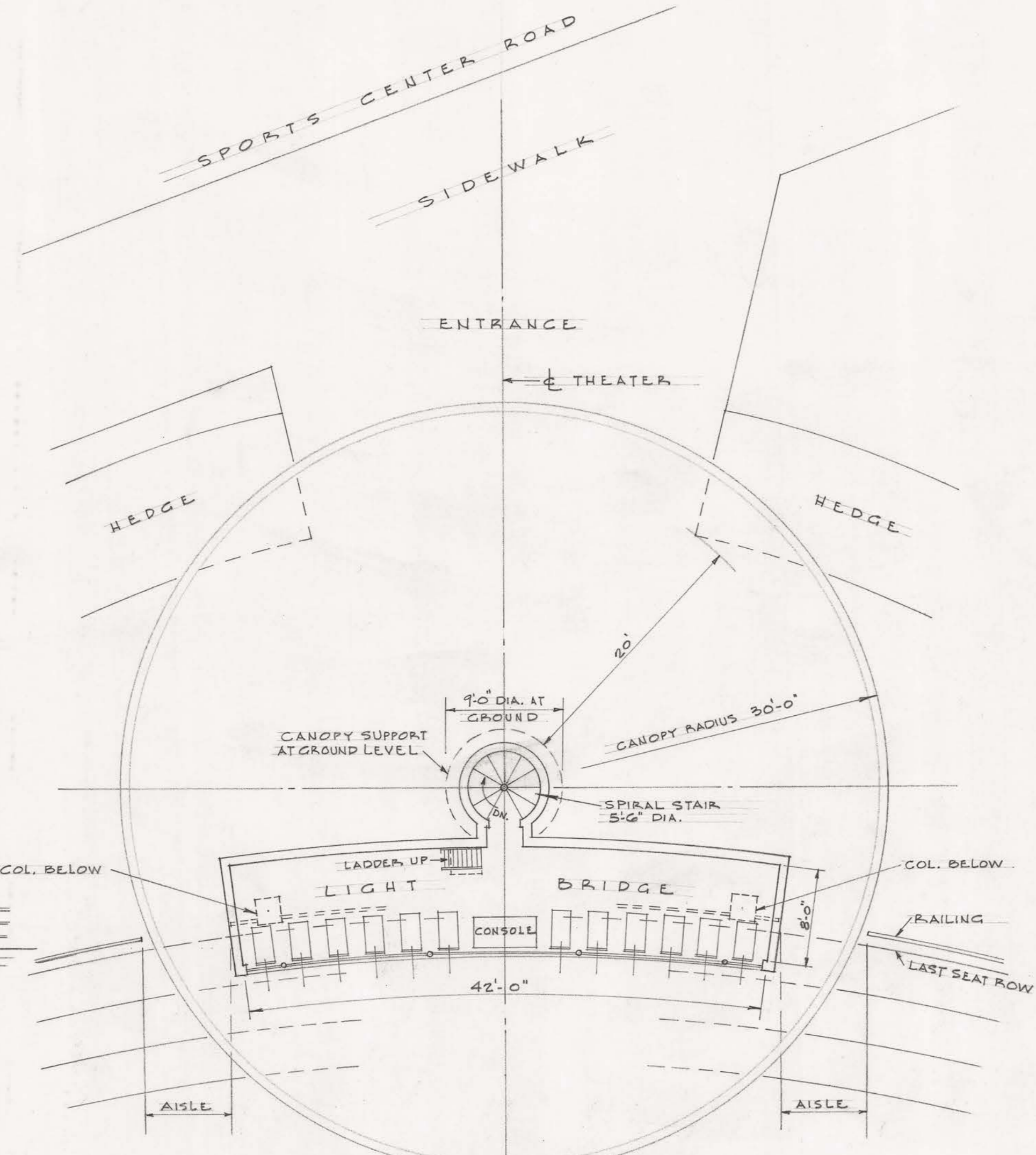
PYLONS FOR SIDELIGHTING OF STAGE AND SOUND EQUIPMENT



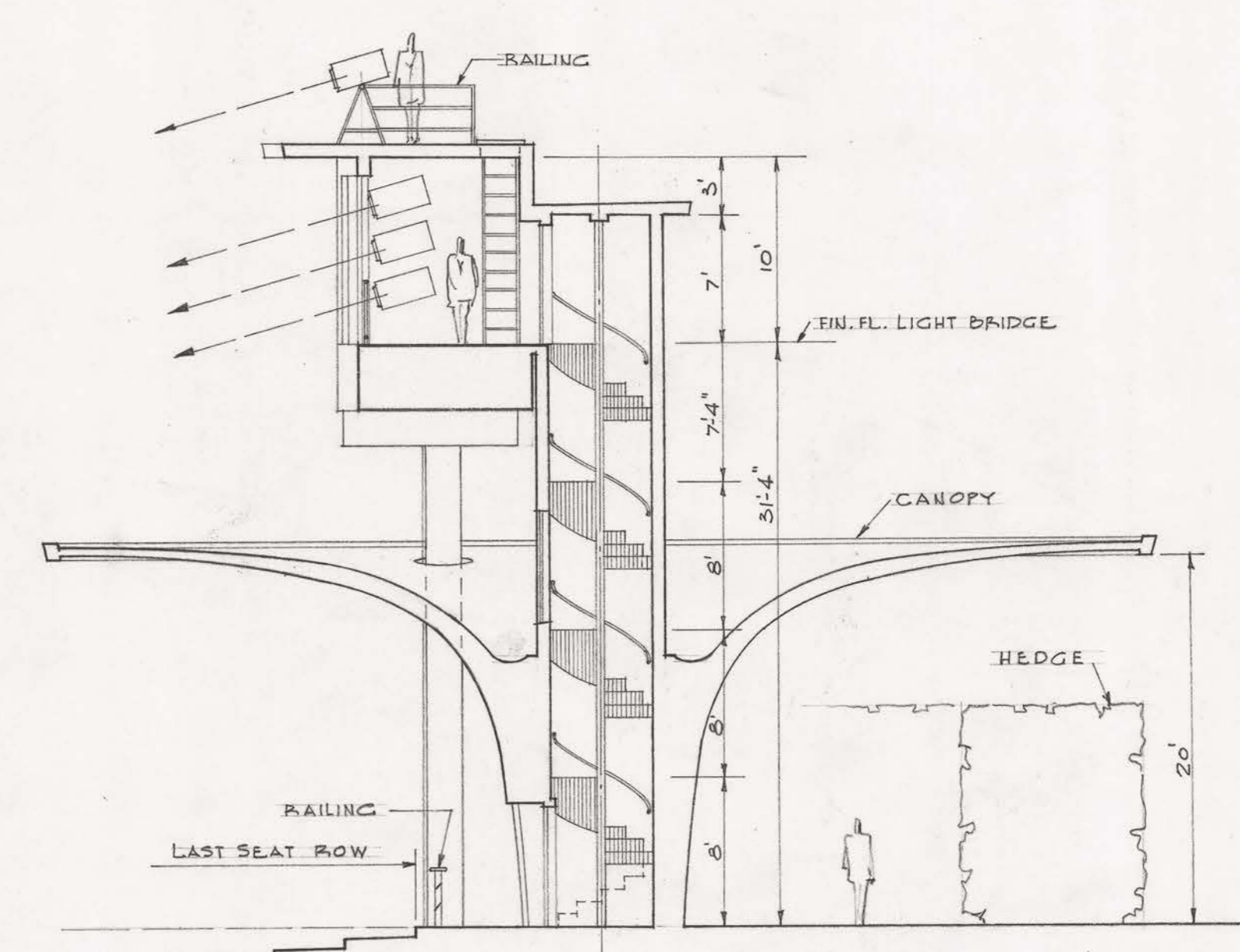
PLAN OF NORTH PYLON
SOUTH PYLON SIMILAR, REVERSED



ELEVATION FACING STAGE



PLAN
ENTRANCE CANOPY & LIGHT BRIDGE



SECTION ON CENTER LINE OF THEATER

DRAWN BY G.S.V.
DATE NOV. 21, 1956

CITY OF MONTREAL PUBLIC WORKS DEPARTMENT		
MASTER PLAN OF THE SPORTS CENTER MAISONNEUVE PARK		
OUTDOOR THEATER		
DATE: JAN. 1957	SCALE: 1/8" = 1'-0"	DWG NO. 24
GILMORE D. CLARKE - LANDSCAPE ARCHITECTS		MICHAEL RAPUANO
145 EAST 32 ND ST.		NEW YORK 16, N.Y.