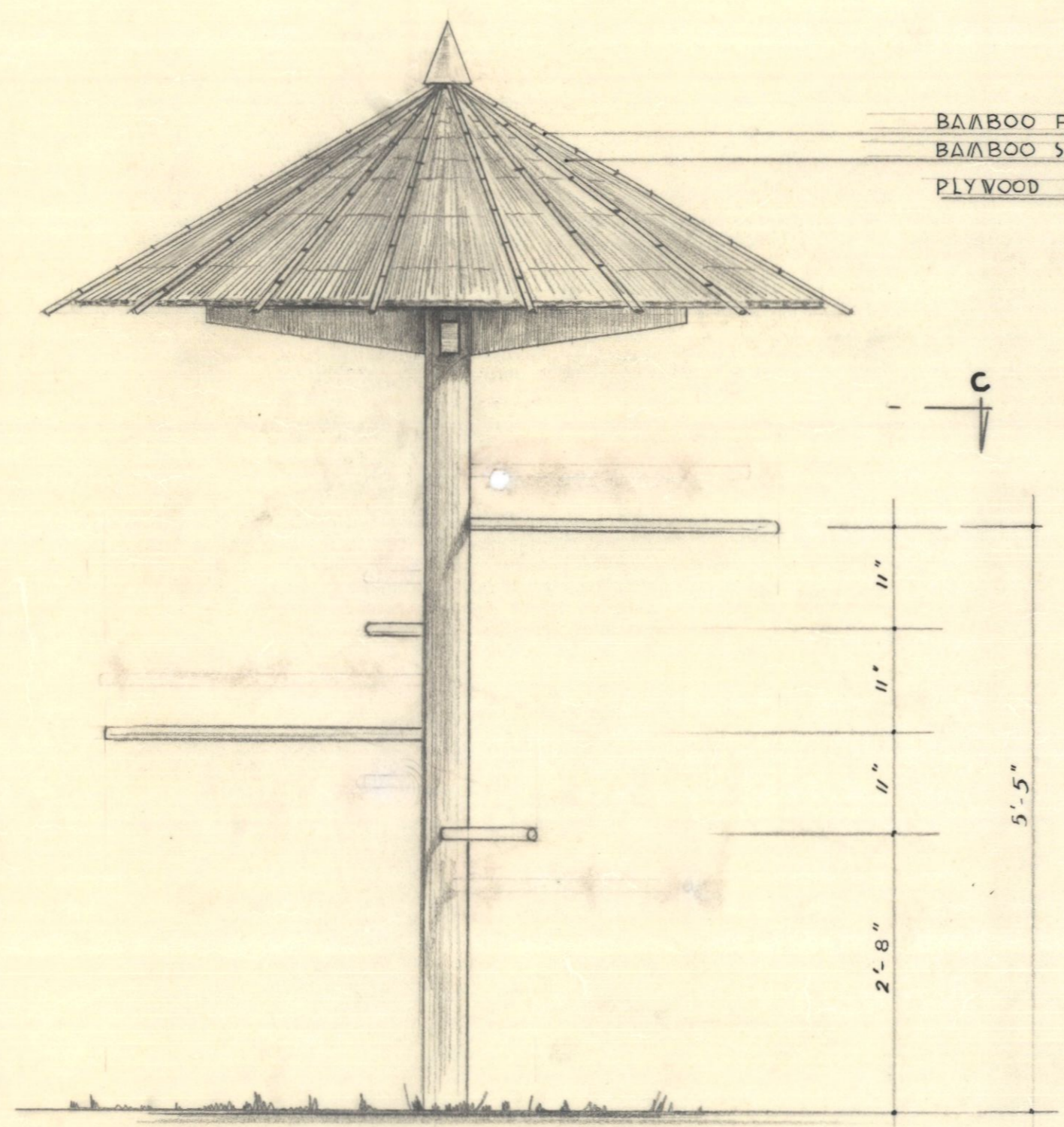
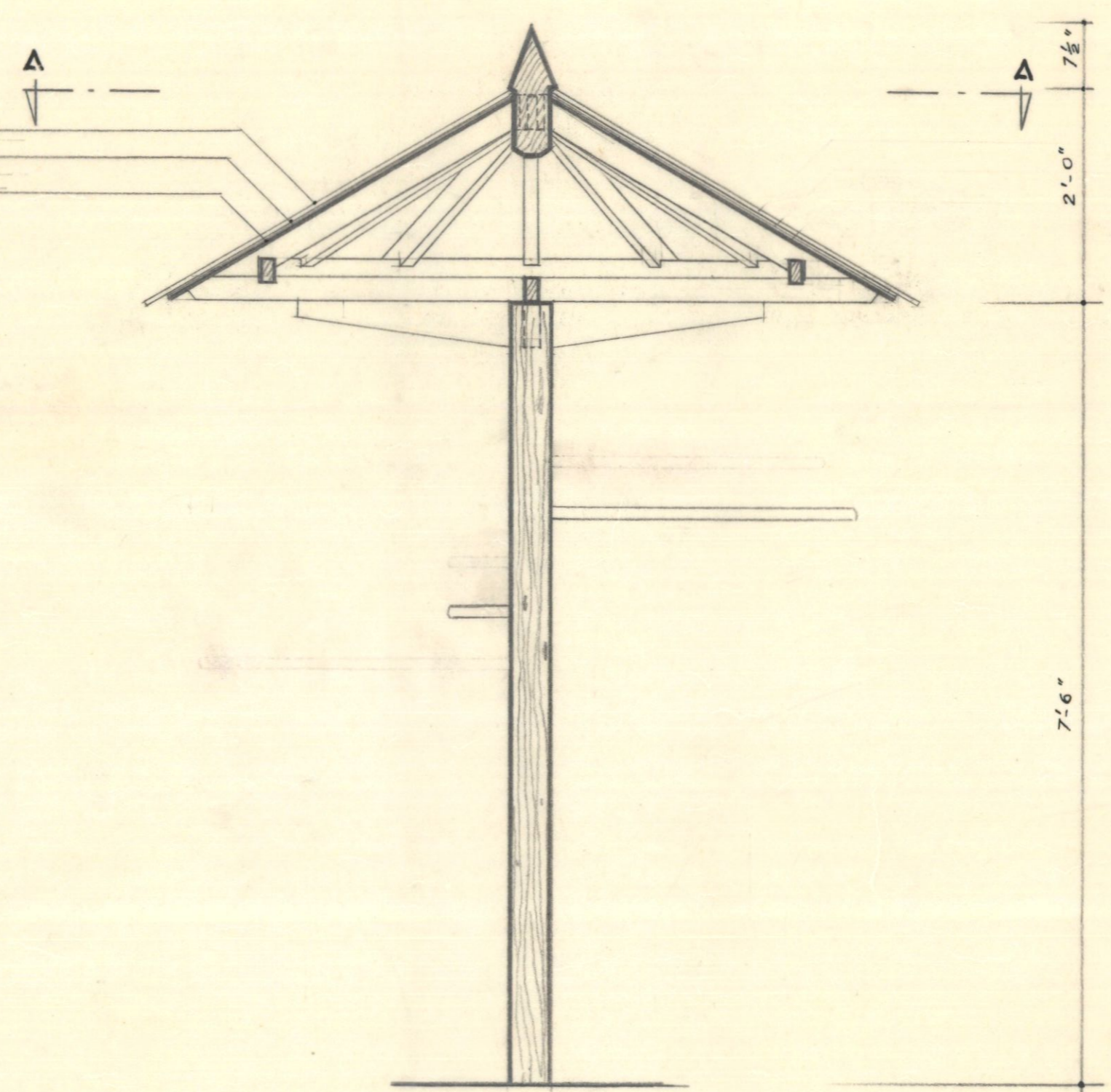


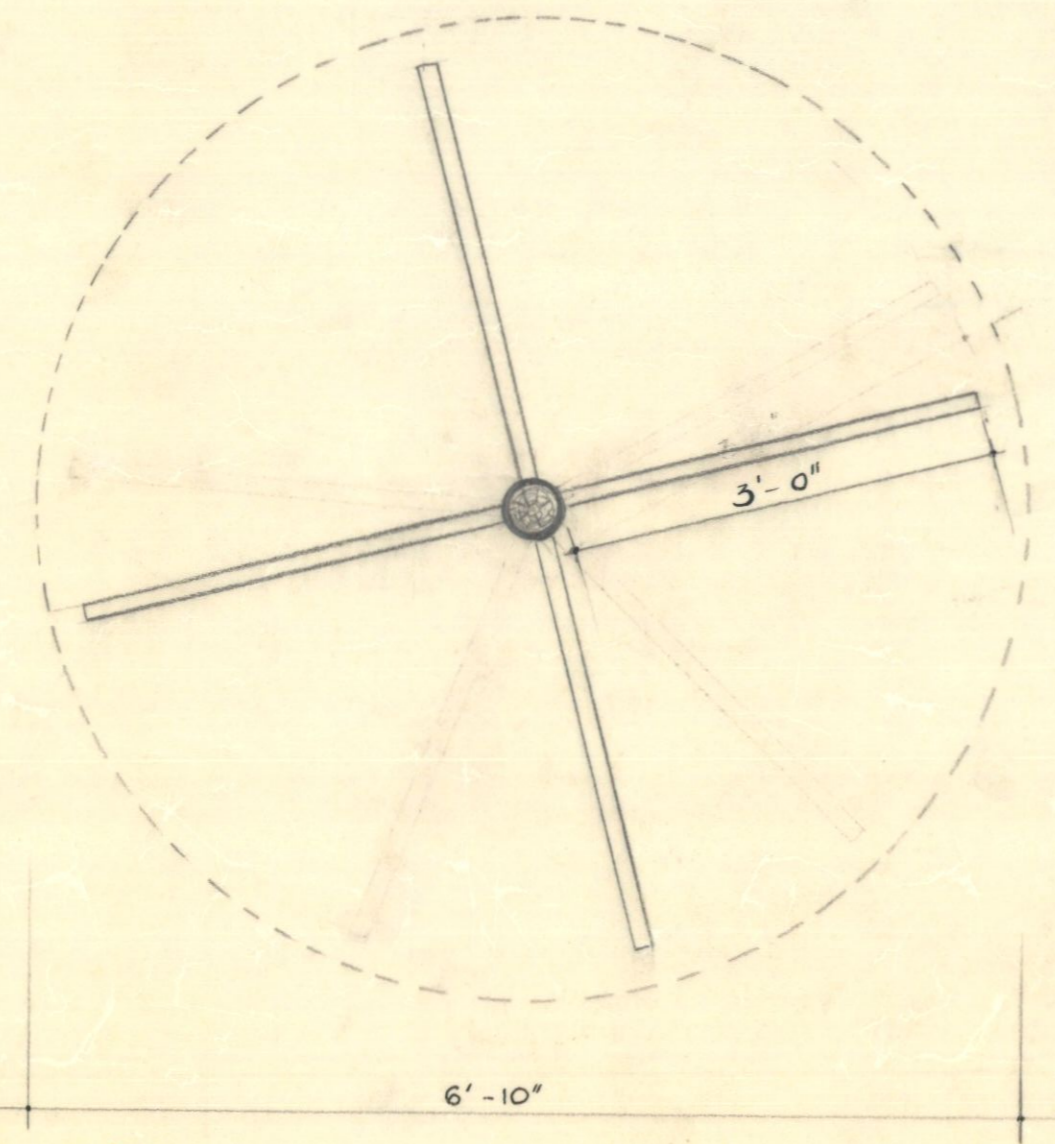
GP 2672



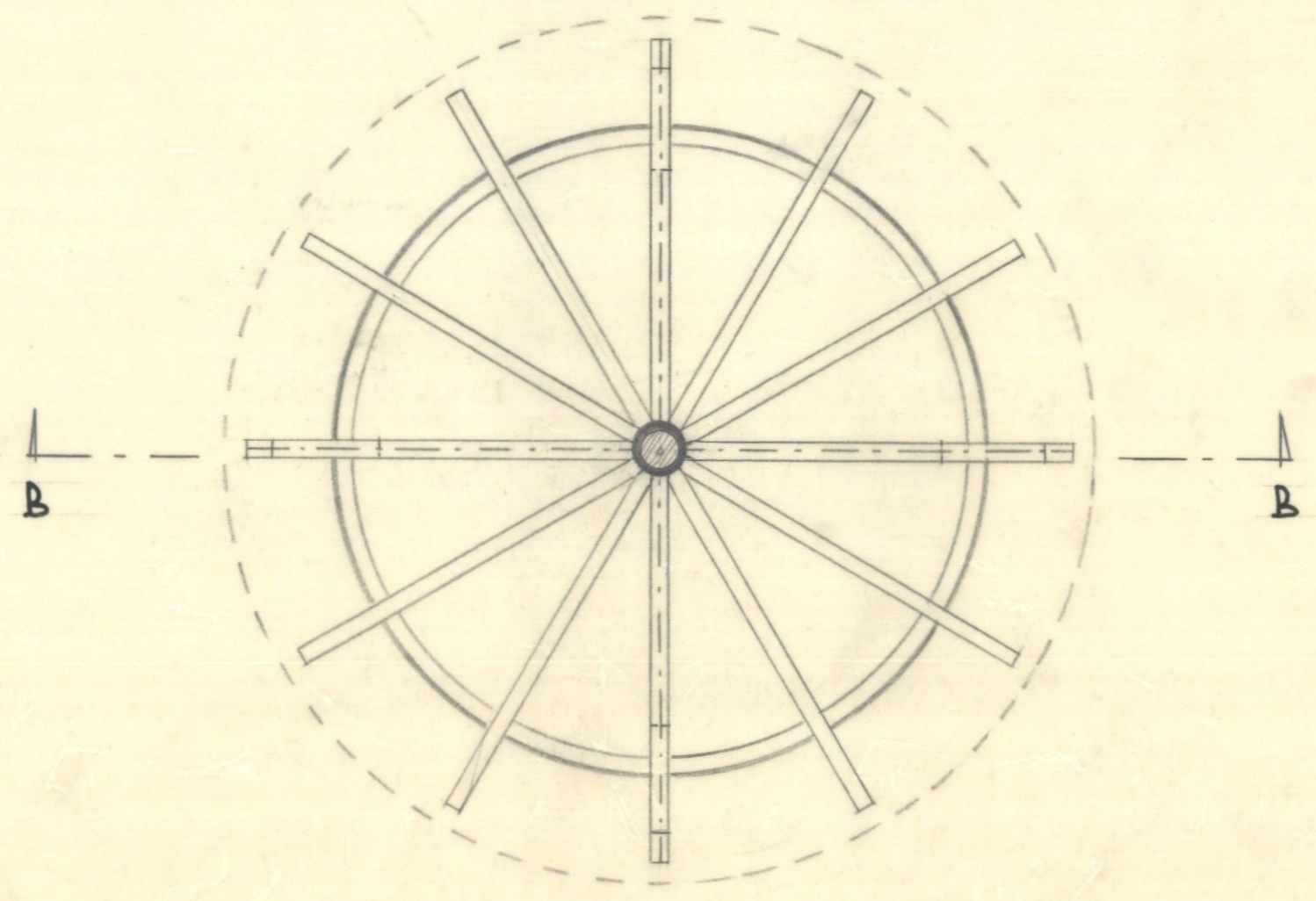
VIEW



SECTION B-B



SECTION C-C



SECTION A-A

CITY OF MONTREAL		
PUBLIC WORKS DEPARTMENT		
TECHNICAL DIVISION "Section of Construction"		
LANDSCAPE ARCHITECTURE		
PEACOCK		
ROOST - SHELTER		
CHILDREN ZOO		
STUDY NO. 2.		
DESIGNED BY:	<i>W. L. Shaw</i>	
CERTIFIED BY:	<i>John Bonker</i>	
DATE:	TECHNICAL SECTION ENGINEER	
APPROVED BY:	<i>M. C. Rosillaro</i>	
DATE: 9-4-59	DIRECTOR OF PARKS	
APPROVED BY:	<i>P. P. Miller</i>	
DATE: 26-5-59	PUBLIC WORKS	
DRAWN BY:	DATE:	SCALE:
<i>J. J. Shaw</i>	MARCH 23, 59.	1'-0" = 3/4"
INDEX NO.	DRWG. NO.	SHEET
61-E	P.S. 2.	OF—