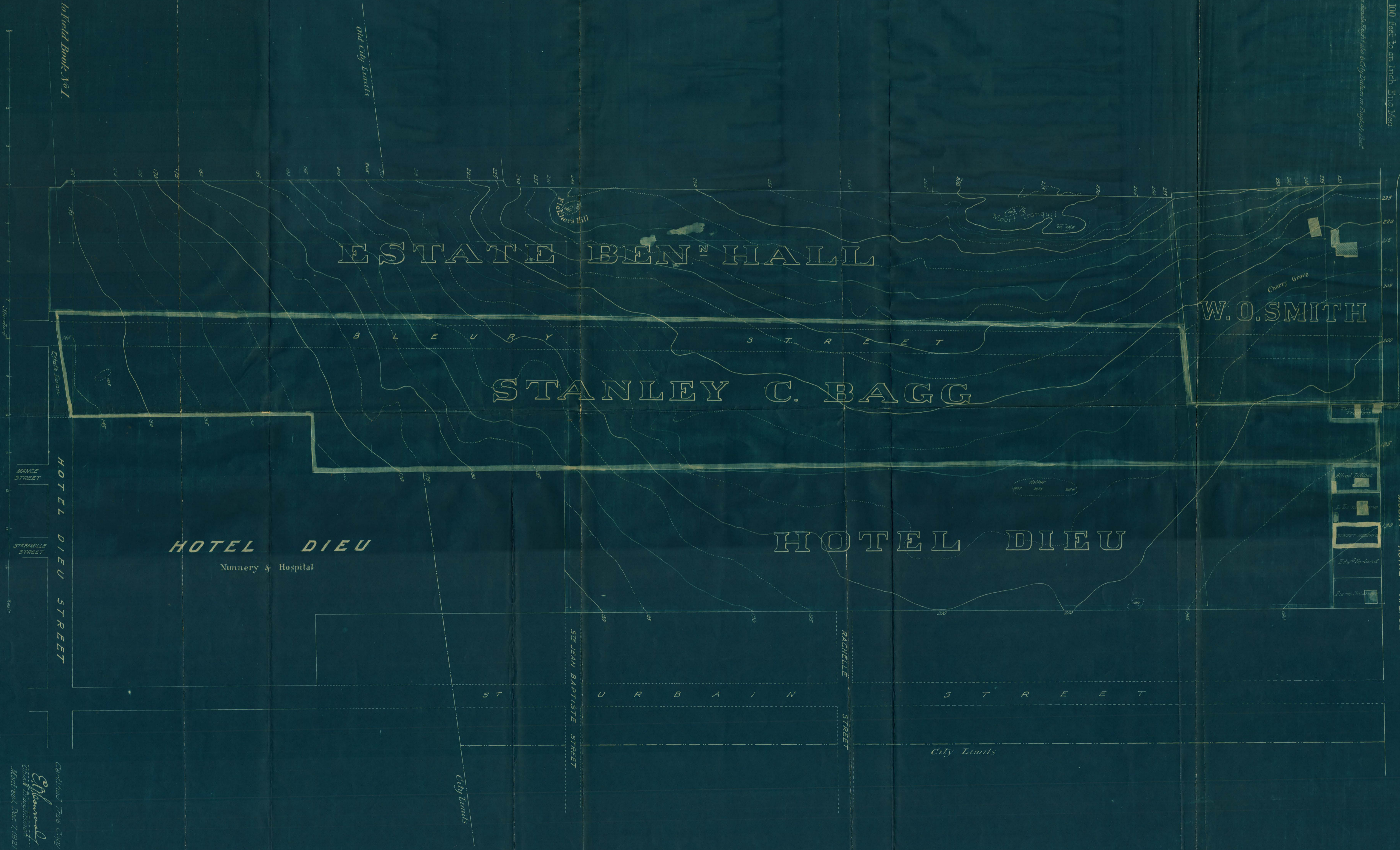


Plan of Contours
MOUNT ROYAL PARK

SHEET 1

Scale 100 feet to an Inch. Eng. Mec.

Note: The Contour Figures are based upon a Height of 100 feet in 1850.



Reference to Field Book, Vol. 1.

Checked True Copy
Edmond
 Chief Draftsman
 Montreal, Dec 7, 1921

Plan 1/4" = 60' S. Robinson
 Revised by S.H.L.
 Checked by S.H.L.