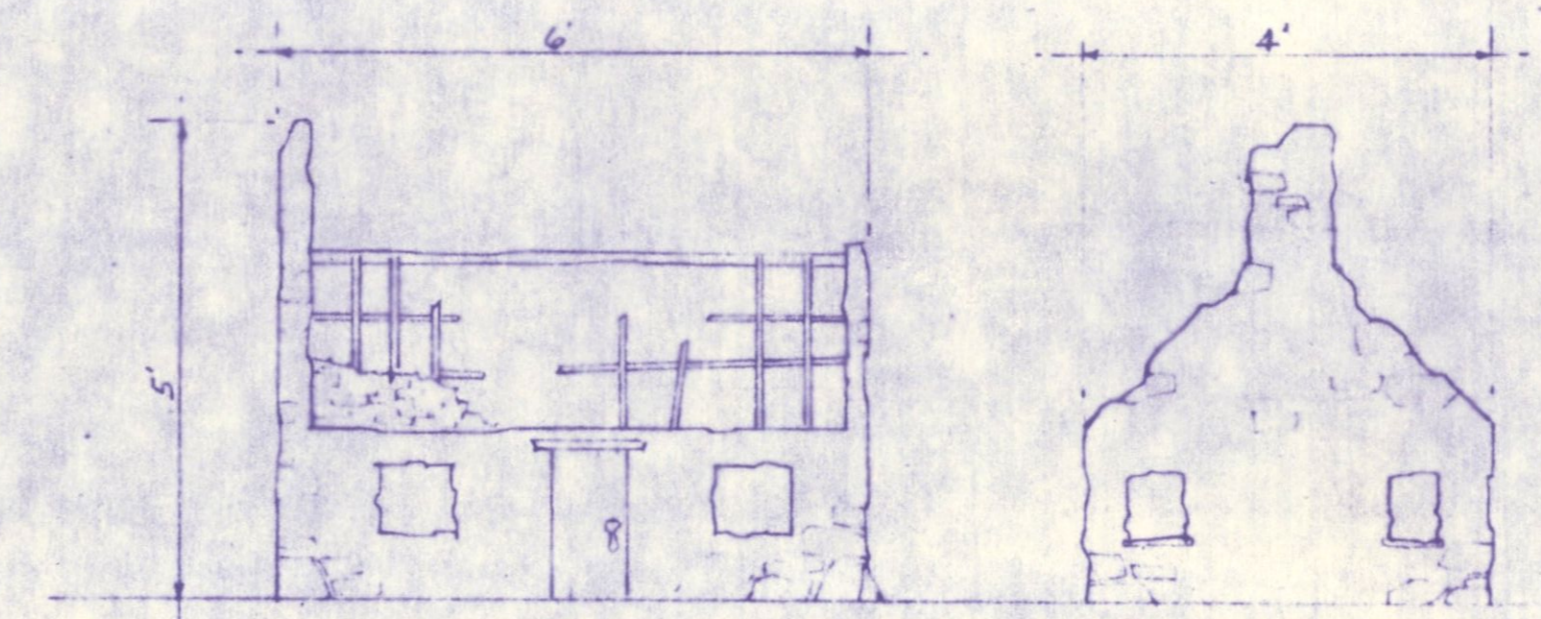


FRONT ELEVATION SIDE ELEVATION

HOUSE OF THE SEVEN DWARFS

SCALE :  $\frac{3}{4}'' = 1'-0''$

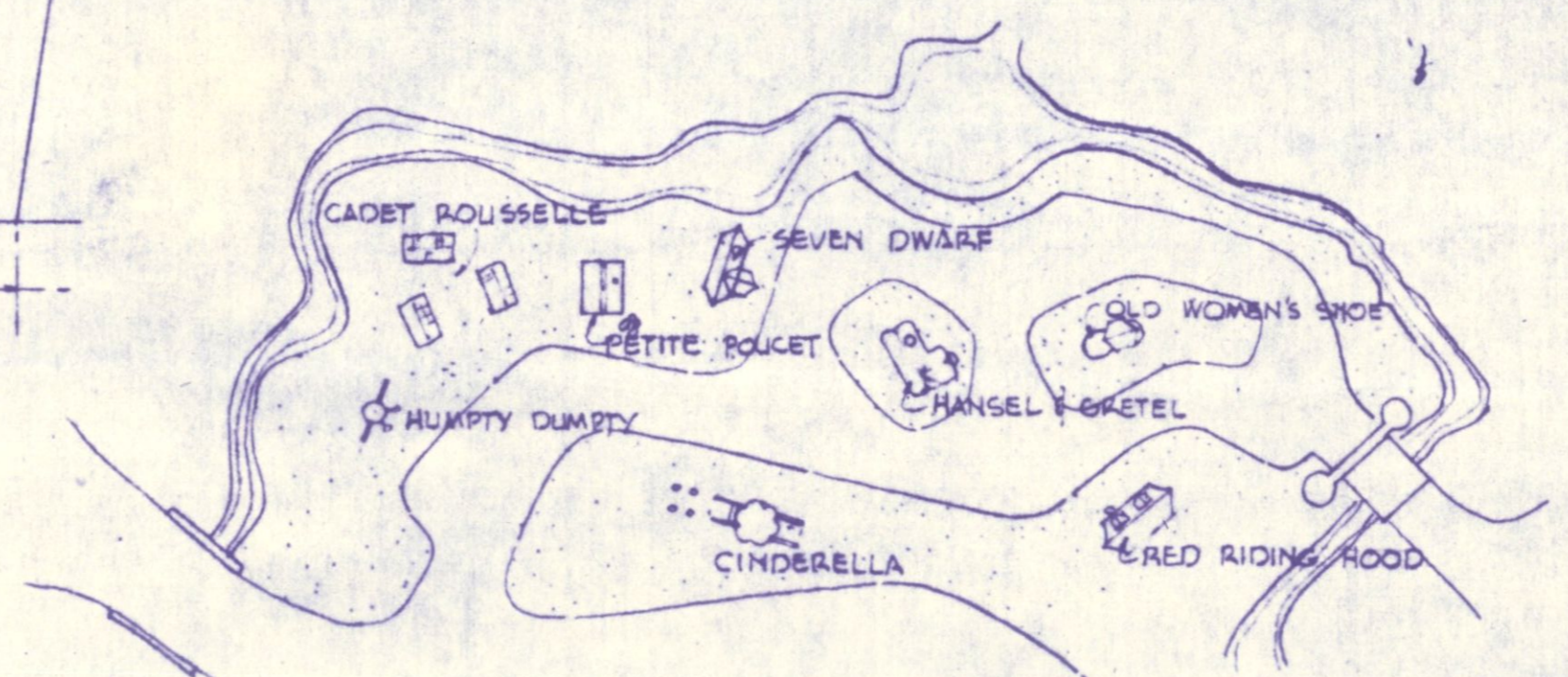


FRONT ELEVATION SIDE ELEVATION  
CADET ROUSSELLE

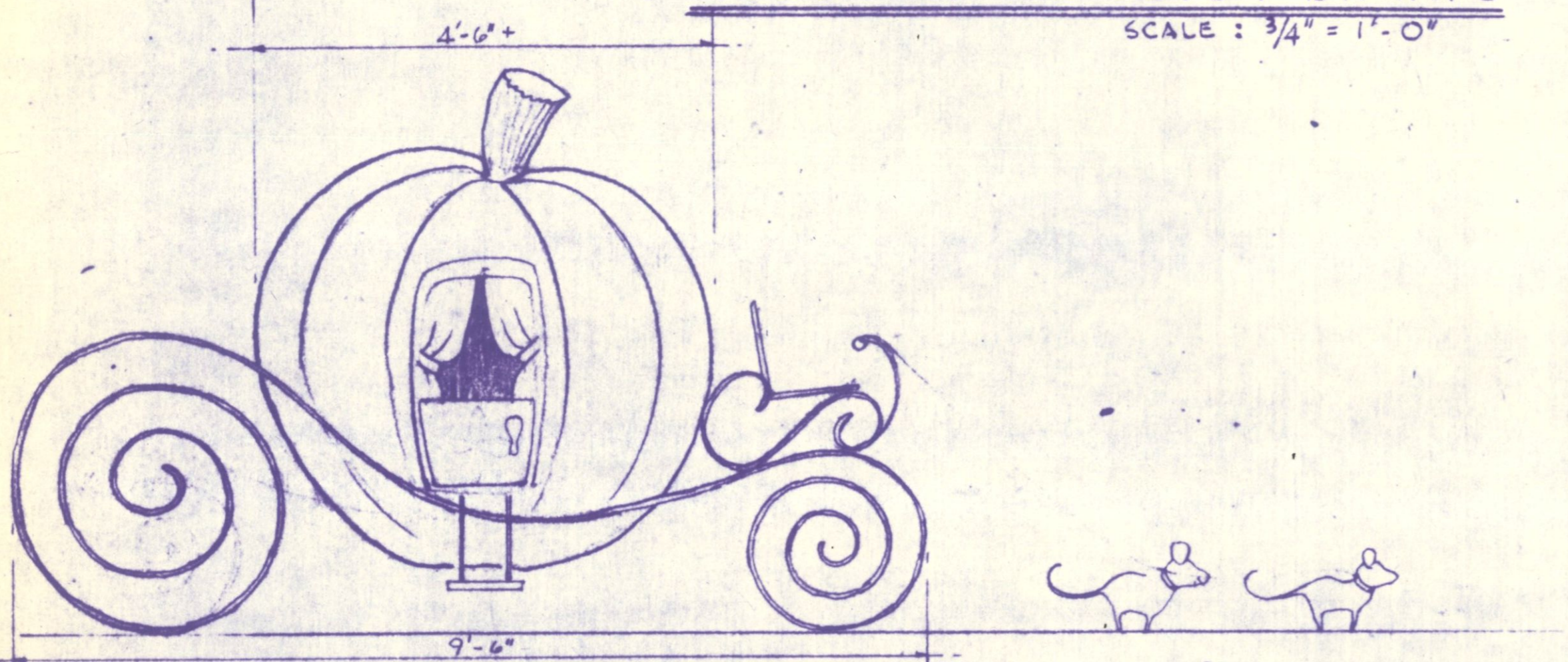


TYPICAL SIGN FOR VILLAGE  
SCALE :  $\frac{1}{2}'' = 1'-0''$

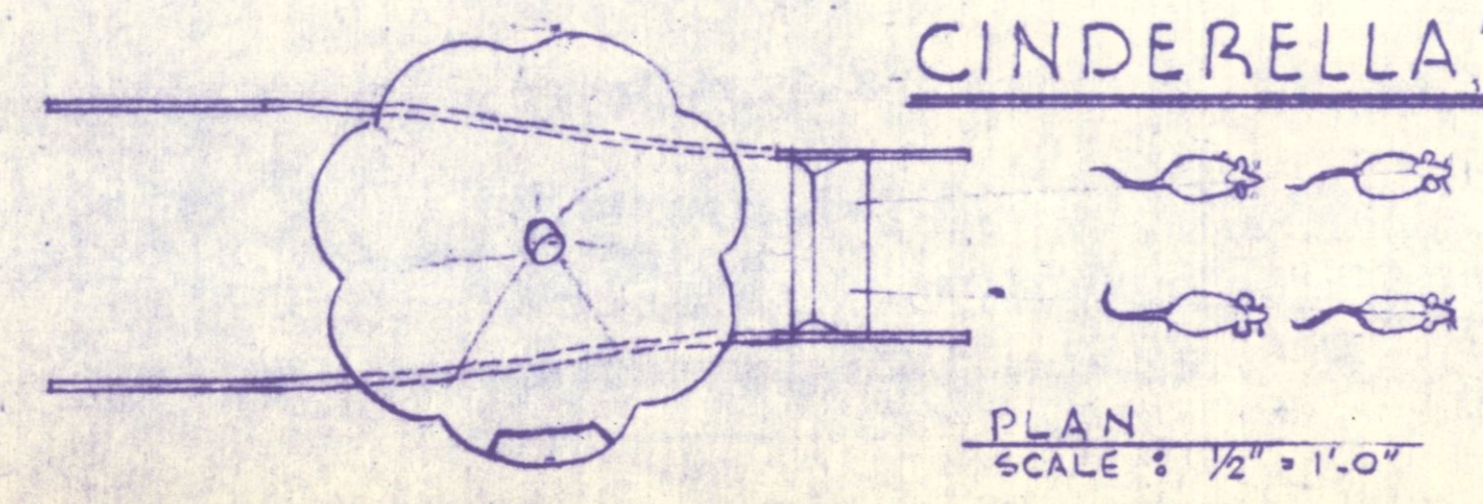
NOTE :  
SIGNS TO BE MADE FOR :  
LITTLE RED RIDING HOOD  
CADET ROUSSELLE  
THE SEVEN DWARFS  
CINDERELLA  
OLD WOMAN IN THE SHOE  
HANSEL AND GRETEL



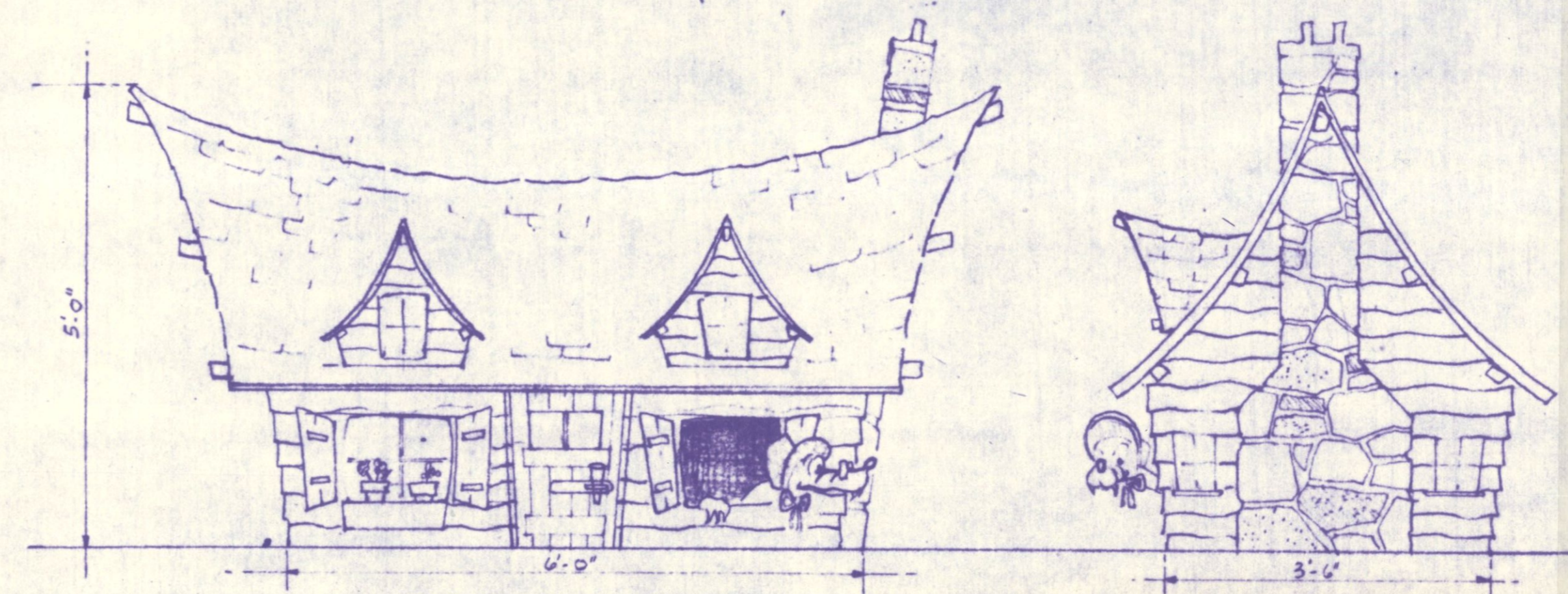
VILLAGE PLOT PLAN  
SCALE :  $1'' = 20'-0''$



SIDE ELEVATION  
SCALE :  $\frac{3}{4}'' = 1'-0''$   
CINDERELLA'S COACH



PLAN  
SCALE :  $\frac{1}{2}'' = 1'-0''$



FRONT ELEVATION SIDE ELEVATION  
LITTLE RED RIDING HOOD

BUILDING STUDIES THE VILLAGE

McFadzean & Everly, Ltd.  
LANDSCAPE ARCHITECTS & LAND PLANNERS  
6550 COTE DES NEIGES RD., MONTREAL P.Q., CANADA