

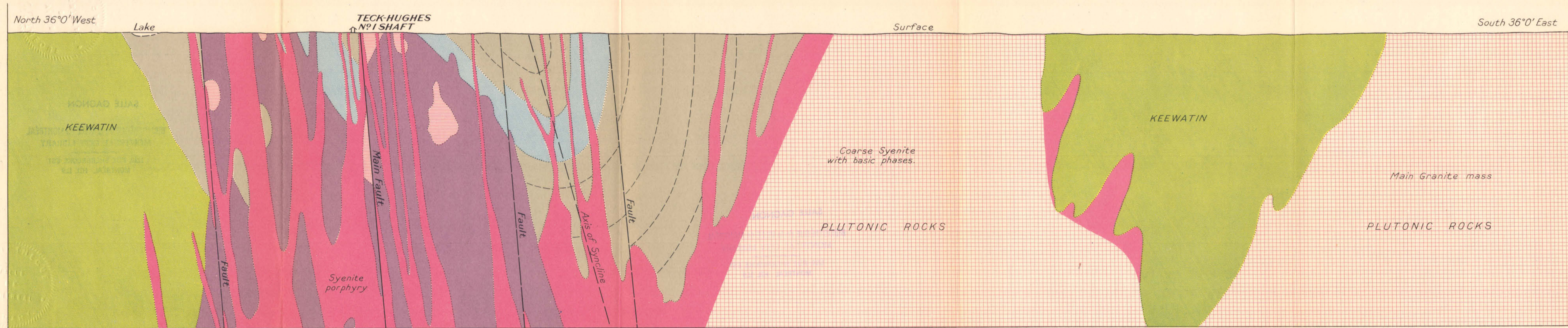
INV. 415

c 44

F.V.D.

717 101

Sheet No. 37c-14
VERTICAL SECTION XIII, GENERALIZED SECTION.



NOTE. The Legend for this Vertical Section is placed on the Envelope marked "Series No. 37c."

Sheet No. 37c-14
VERTICAL SECTION XIII, Generalized Section through No. 1 Shaft of Teck-Hughes Gold Mines.

Horizontal and Vertical Scale, 1000 feet = 1 inch.