

*Avenue*  
*Mount Royal*

*Street*

*Mary Ann*

*Street*

*Rachel*

*Street*

*St Jean Baptiste*

PLAN SHOWING COLORED RED  
THE LANE MENTIONED IN THE ACCOMPANYING PETITION  
OF CITIZENS OWNING PROPERTY ON UPPER ST URBAIN ST,  
ST JEAN BAPTISTE WARD, MONTREAL.

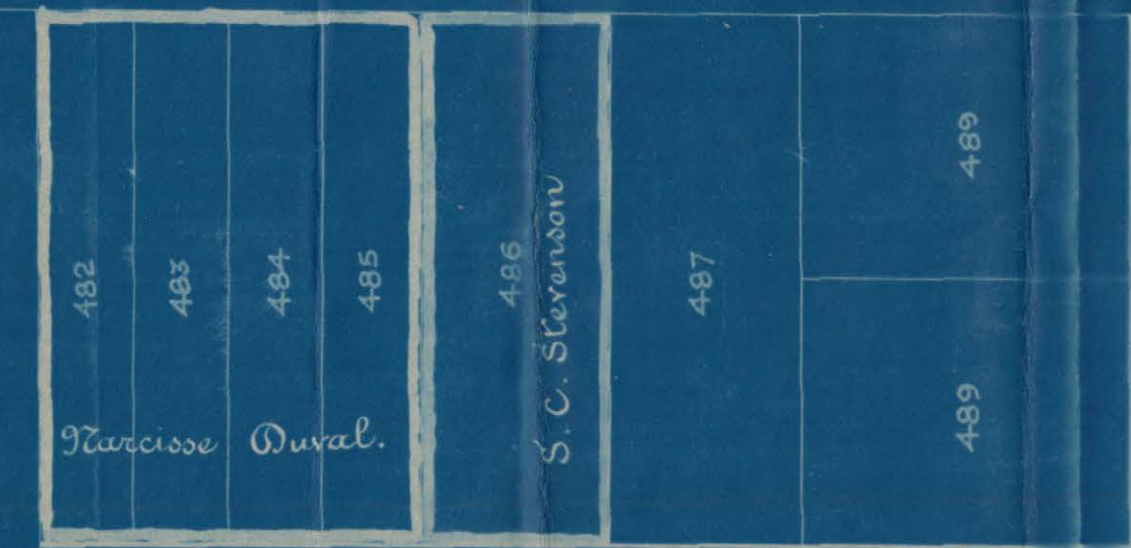
MONTREAL, 14<sup>th</sup> JULY, 1890.

NOTE: OFFICIAL NUMBERS THUS 482

MADE BY  
(SIGNED) JOS. RIELLE P.L.S.

Scale of English Feet  
0 50 100 200 Feet

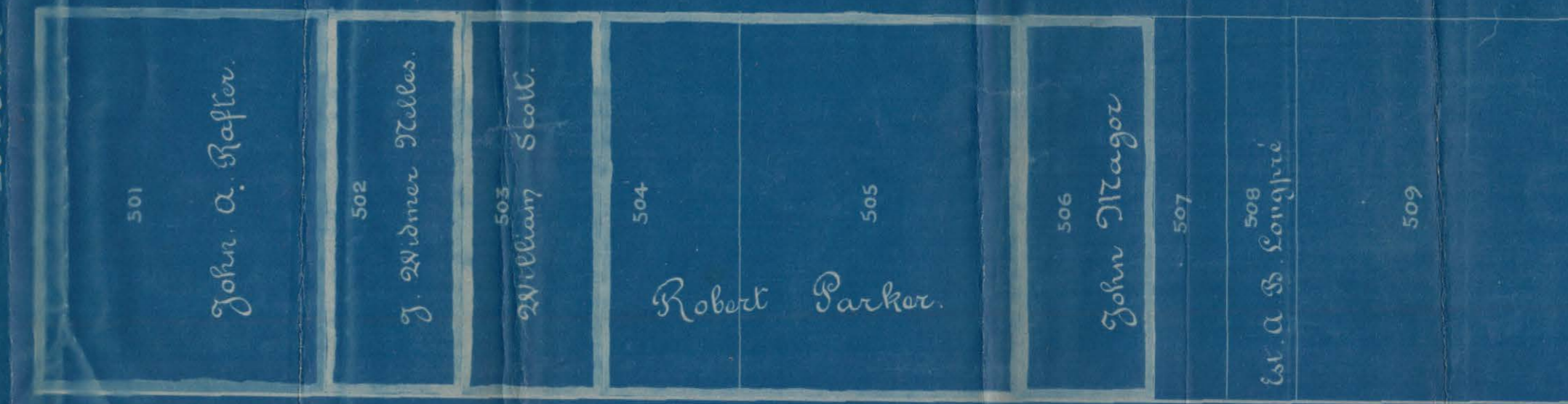
*St Urbain Street*



*Lane*



*Lane*



*Lane*

MOUNT ROYAL PARK