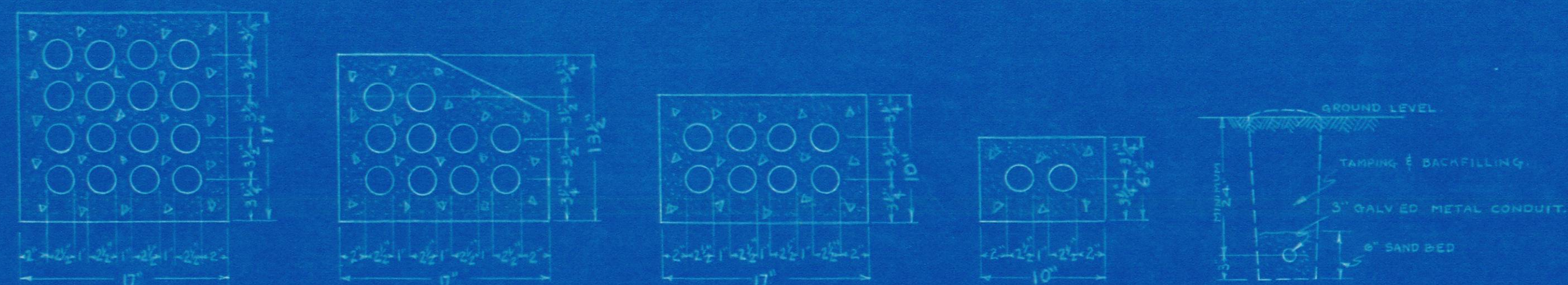
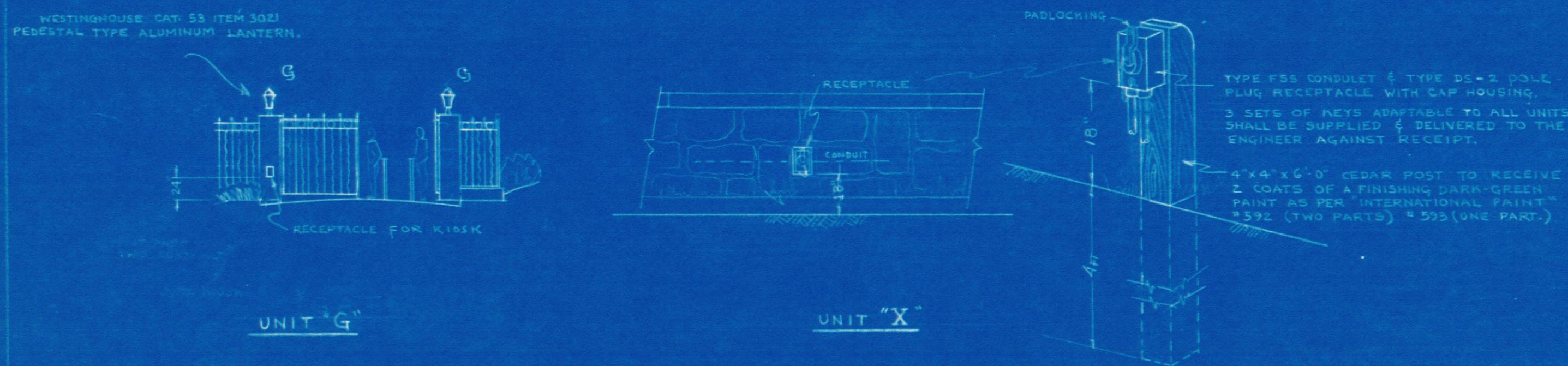


NOTE  
ALL DUCTS TO BE 2" UNDER FINISHED GRADE.

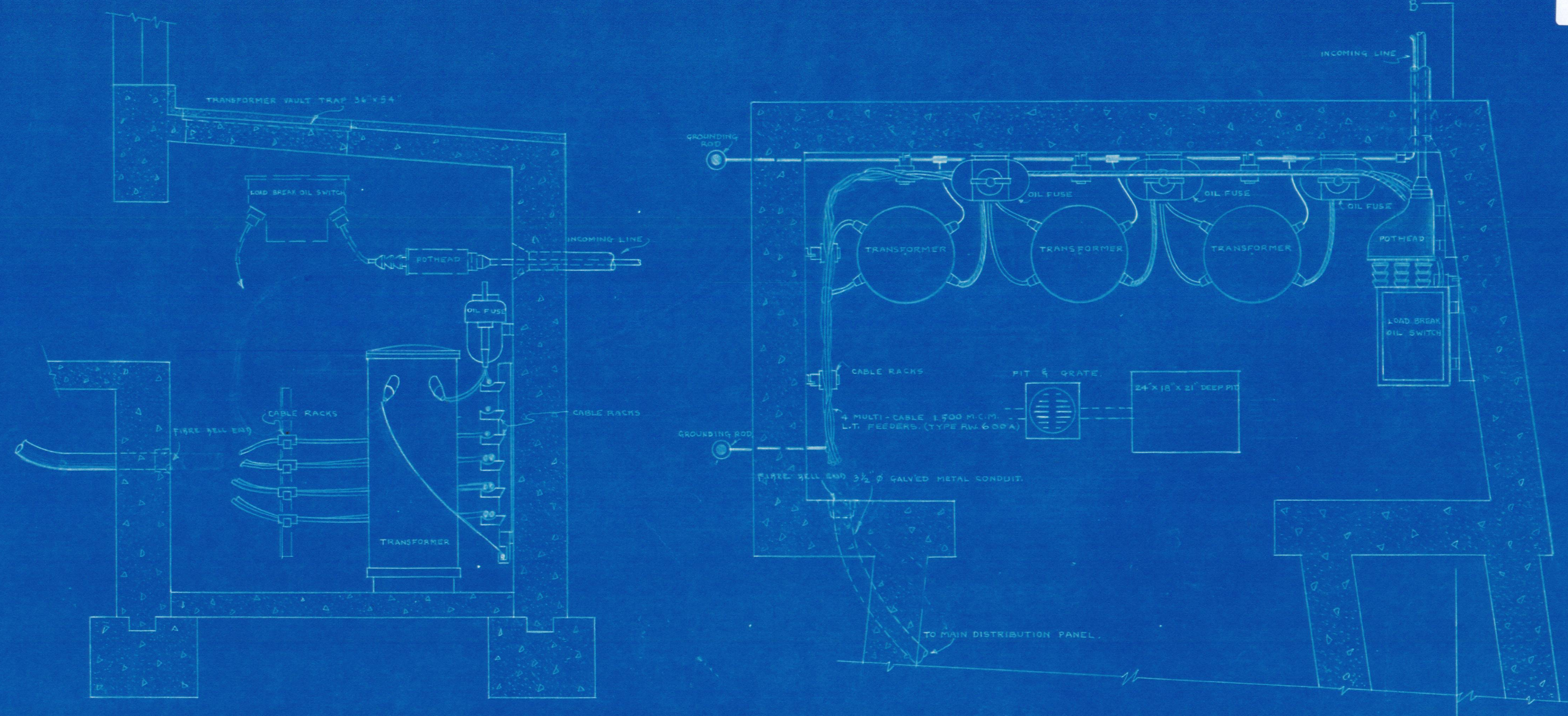


TYPICAL DUCT RUN SECTIONS

ALL DUCTS SHALL HAVE 3/100 FT SLOPE TO THE DRAINING MINORILE LOCATED NEAR THE LAKE.



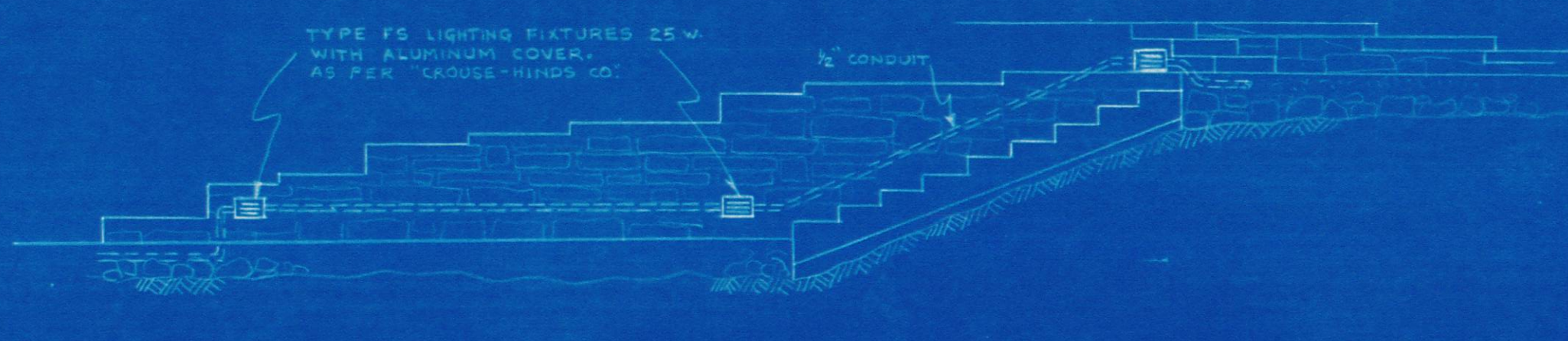
TYPICAL ARRANGEMENT OF GATE LIGHTING & RECEPTACLE FOR KIOSK LIGHTING.



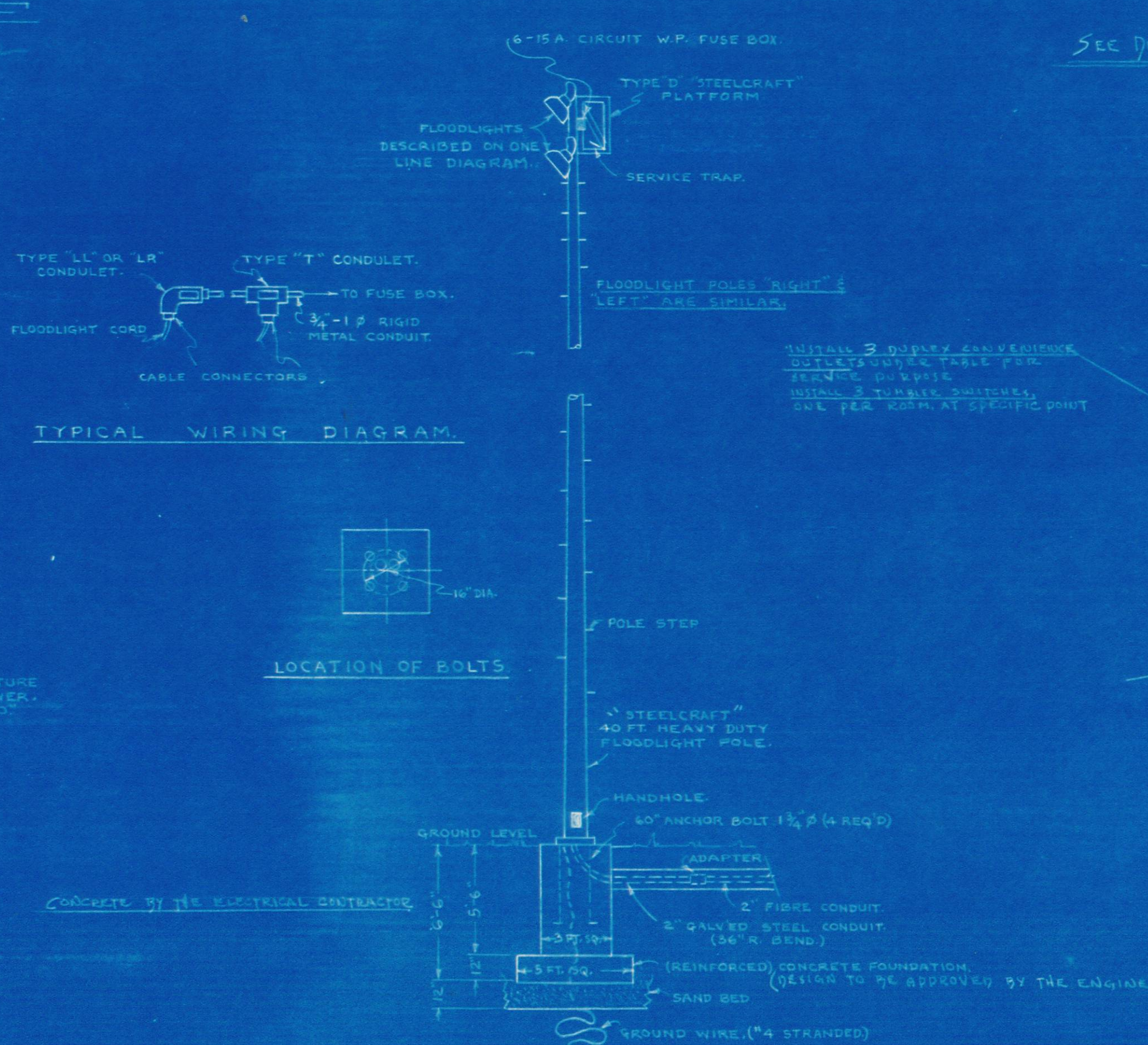
TRANSFORMER ROOM

SCALE 3/4" = 1'-0"

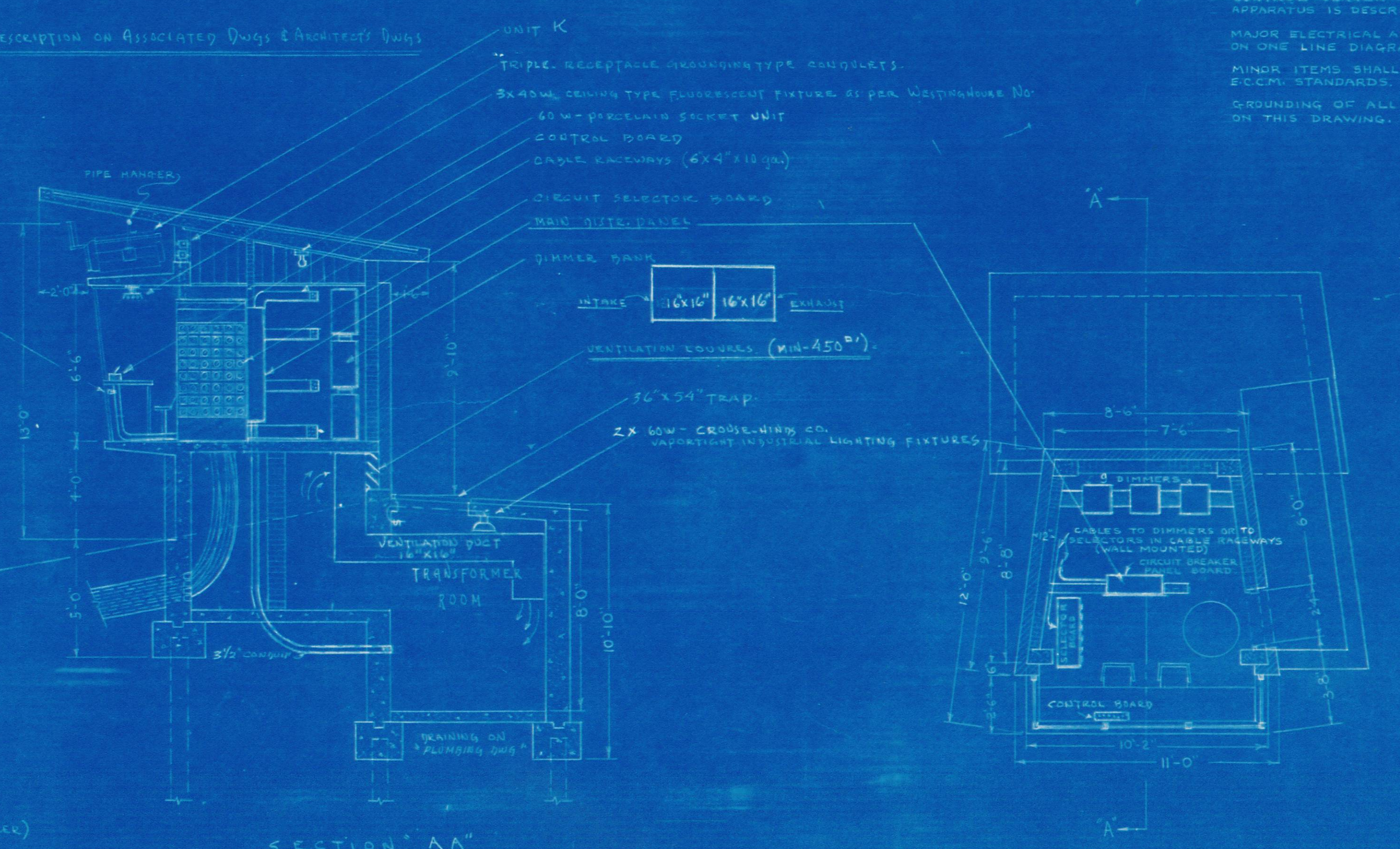
NOTE  
CONSTRUCTION OF TRANSFORMER VAULT & COMPLETE CONTROL CENTER EXCEPT ELECTRICAL APPARATUS IS DESCRIBED ON ARCHITECT'S DWGS. MAJOR ELECTRICAL APPARATUS ARE DESCRIBED ON ONE LINE DIAGRAM DWG-4002. MINOR ITEMS SHALL BE IN ACCORDANCE WITH ECIM STANDARDS. SOUNDING OF ALL METAL PARTS IS NOT SHOWN ON THIS DRAWING.



TYPICAL INSTALLATION OF WALKWAY LIGHTING UNIT



TYPICAL FLOODLIGHT POLE ASSEMBLY

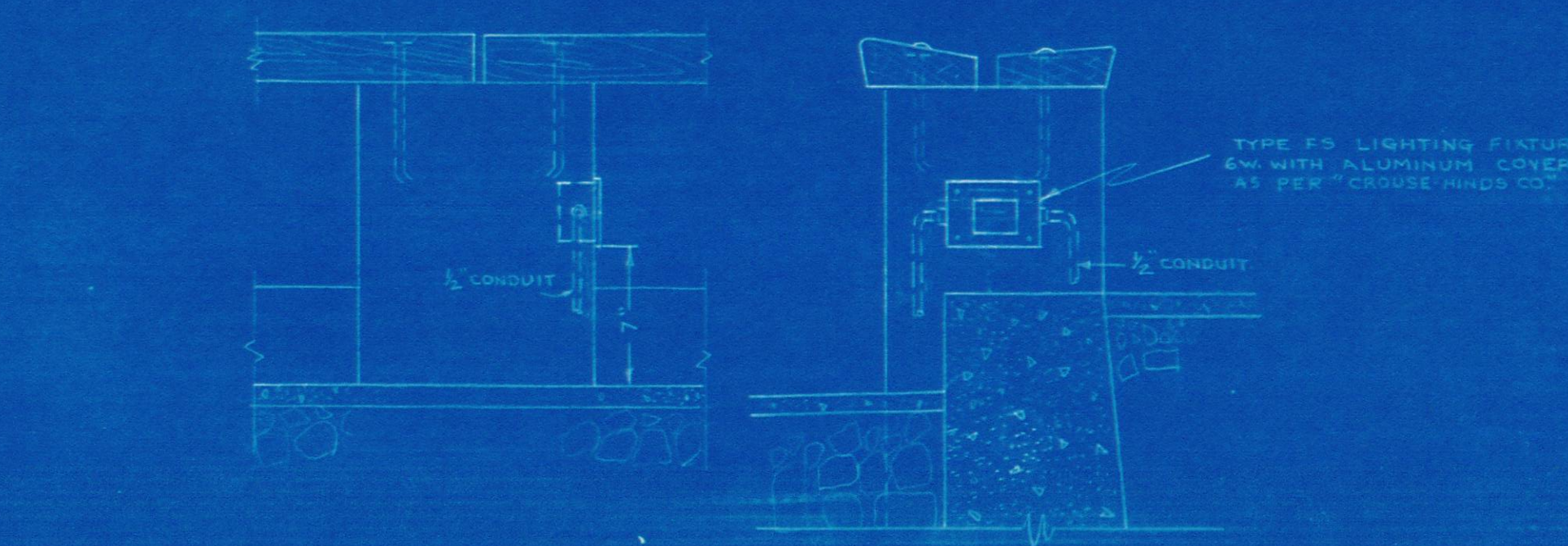


CONTROL CENTER

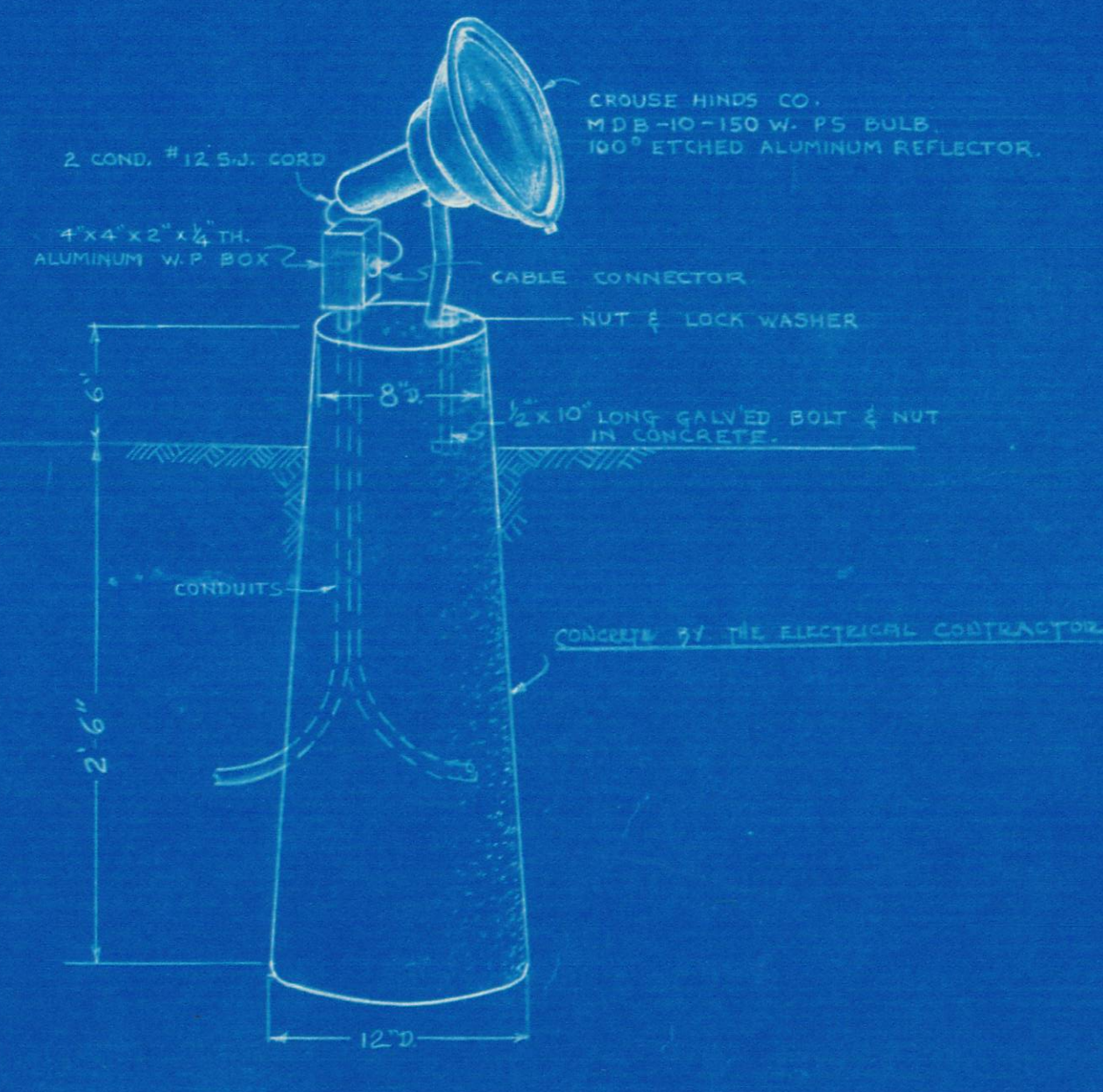
SCALE 1/4" = 1'-0"

ASSOCIATED DWGS

GENERAL LAYOUT	* 4001
ONE-LINE DIAGRAM	* 4002
STACK & BACKSTAIR LAYOUT	* 4003
DETAILS	* 4004



TYPICAL INSTALLATION OF SEAT LIGHTING UNIT



TYPICAL INSTALLATION OF STAGE LIGHTING EQUIPMENT

TREE LIGHTING ARRANGEMENT

NO.	DATE	DESCRIPTION
REVISIONS		
CITY OF MONTREAL PUBLIC WORKS DEPARTMENT-DIBORN ENGINEERING DIVISION-ELECTRICAL-MECHANICAL		
<b>LAFONTAINE PARK</b> OPEN-AIR THEATRE LIGHTING		
CERTIFIED <i>A. L. B.</i> P.E. ENGINEER		
APPROVED	<i>J. P. J.</i>	DIRECTOR
DESIGNED BY	SCALE	DATE
DRAWN BY	DATE	PROJECT
CHECKED BY	DATE	NO.
DATE	TIME	NO.
D-855	1107	4004